



National Trust of Zimbabwe

ESTABLISHED 1960

ANNUAL REPORT 2014



Member of International National Trusts Organisation and the Global Heritage Network
Reciprocity with National Trusts worldwide and Stichtings Kasteelen en Geldersch Landschap in the Netherlands



National Trust of Zimbabwe Contact Details:

SECRETARIAT

30 Hawkshead Drive
Borrowdale
Harare
Zimbabwe

Email: ntzimbabwe@gmail.com
E-mail: hyslop@mango.zw

REGIONAL COMMITTEES

Nyanga:

Mrs Edone-Ann Logan:
E-mail: leecrofts@bsatt.com

La Rochelle

Mr Ross Whiting
E-mail: ross@acumenafrika.com

Mutare:

Mr D Becker
E-mail: desjamesbecker@gmail.com

Worlds View:

Mr R Barret
E-mail: barelect@zol.co.zw
Like us on Facebook

Join our Facebook network: National Trust Zimbabwe



National Trust of Zimbabwe

Table of Contents

About The National Trust of Zimbabwe	4
The NTZ Governing Body	4
Mission Statement	4
Overall Aims and Objectives of the Trust	4
The Structure of the National Trust of Zimbabwe	5
INTO Membership	5
NTZ Properties	6
Services Offered	8
President's Report to the 41St Annual General Meeting	9
Chairmans Report - Nyanga Committee	11
Rhodes Nyanga Historical Exhibition Update	12
Worlds View - Regional Chairman's Report	14
Fort Gomo, Sebakwe Poort and Mabukwene - Report	15
Murahwa's Hill - Regional Chairman's Report	15
La Rochelle - Regional Chairman's Report	16
Financial Statements	
Report of the Auditor	17
Balance Sheet	18
Income and expenditure accounts	19
Statement of Cash Flow	20
Notes to the Financial statements	21
Membership form	



**National Trust
of Zimbabwe**

ESTABLISHED 1960

About the National Trust of Zimbabwe

The National Trust was originally founded in the United Kingdom in 1895 by three Victorian philanthropists - Miss Octavia Hill, Sir Robert Hunter and Canon Hardwicke Rawnsley. Concerned about the impact of uncontrolled development and industrialisation, they set up the National Trust to act as a guardian for the nation in the acquisition and protection of threatened coastline, countryside and buildings. More than a century later the National Trust remains very much alive and a similar sister organization, The NTZ was established in 1960 by the National Trust Act with the same aim of protecting and managing properties for future generations to enjoy.

Some of our properties are held in perpetuity so that their future protection is secure. The others are open to visitors and we are constantly looking at ways in which we can improve our services.

The NTZ Governing Body

The National Trust act is assigned to the Minister of Environment, Water and Climate Change. It is administered and controlled by a voluntary Council consisting of a President and not less than 10 or more than 20 members of whom not more than 18 are elected at an annual general meeting of members and three are appointed by The Ministry.

Mission Statement

'To be the custodians of those properties and sites of cultural heritage and natural beauty which we hold in trust and to maintain and manage them for the benefit and enjoyment of the people of Zimbabwe and our friends now, and as a legacy for future generations.'

Overall Aims and Objectives of the Trust

The aims and objectives of the NTZ are as follows:

- (a) to accept and hold property in trust for any public purposes and to act in trust for or as Trustee of any property devoted to public purposes in accordance with the conditions of such trust;
- (b) to promote for the benefit of the people of Zimbabwe the permanent preservation and protection of :
 - i). lands and buildings of national, archaeological, historical or aesthetic interest; natural resources, animal or bird life and trees or flora;
 - ii) objects or collections of objects of any description having national, archaeological, historical or aesthetic interest, including furniture, works of art, stamps and literature;
- (c) to provide the public with access to and enjoyment of the lands, buildings, resources and objects mentioned in (b) above;
- (d) to maintain or manage or assist in maintaining or managing lands and buildings for the purpose of public recreation, entertainment, resort or instruction.

Office Bearers

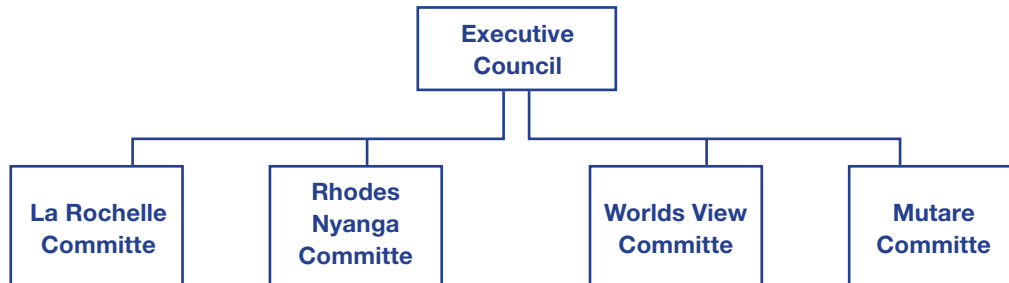
President	Mr. D. Scott
Vice President	Mr. M.J. Kimberley
Treasurer	Mr J.G. Hyslop
Secretary	Mr J.G. Hyslop
Legal Practitioners	Honey and Blanckenberg - Harare

The Structure of the National Trust of Zimbabwe (NTZ)

The NTZ operates using a two level structure as follows:

The Executive Council acts as the overall governing body

Four Regional Committees manage their portfolio of properties, ie membership, sales, marketing, finance, media and so on.



A part-time honorary secretary and a part-time bookkeeper manage the NTZ's headquarters in Harare.

An external auditor is appointed with the approval of the Minister of Environment, Water and Climate Change and audited accounts are submitted to the Ministry on an annual basis.

INTO Membership

The NTZ is part of the International National Trusts Organisation (INTO) which is a non-governmental group founded in 2007. INTO was established to promote the conservation and enhancement of the natural and cultural heritage of all nations for the benefit of the people of the world. INTO has close links with organizations such as: UNESCO, UNEP, ICOMOS, IUCN and Europa Nostra.

Currently, INTO represents about 55 million individual members and countless millions of visitors to sites and properties across more than 25 countries.

INTO are actively involved in various initiatives including conserving and enhancing existing built resources, most notably by the viable re-use of historic and older buildings, greening of existing building stock, and reinvestment in older and historic communities and managing land in a sustainable way.



Mabukuwene

National Trust of Zimbabwe Properties

The Trust controls a total of seven properties: both built and natural environment that are located all around Zimbabwe. With the help of its Council, its employees and a number of unpaid volunteers the Trust manages the following properties:

Bulawayo: Mabukuwene



Mabukuwene means 'the look-out' or 'high point'. The view point is built upon a rocky outcrop 1 422 m above sea level. The property is situated a few kilometres south of Bulawayo City centre and consists of 12 hectares of indigenous trees and plants set in an unspoilt area of kopjes whose distinctive pink hue distinguishes it from other rocky environments in and around Bulawayo.

There is a 360° view point of Bulawayo from the open-sided thatched rondavel. The property was donated to the National Trust of Zimbabwe by the Thomas Meikle Trust in 1979 and partly restored in 1980 by the Aloe Society and the National Trust of Zimbabwe.

Midlands: Sebakwe Poort, Kwe Kwe



This 262 hectare property is situated near Kwekwe. It is essentially an area of natural and unspoiled woodland comprising a large number of species of indigenous trees, including many fine specimens of several different Acacia species.

The Sebakwe River flows through the property and the poort (gorge), is an impressive sight.

Directions to Sebakwe Poort Park:

From the main Harare to Bulawayo Road on the Harare side of Kwe Kwe, at about the 205 km peg, turn right (north) onto the Gokwe Road and proceed for about 10 km.

Eastern highlands: Rhodes Nyanga Historical Exhibition & Worlds View



The Exhibition: Located in the Rhodes Nyanga National Park. The building is known as Rhodes Stables, built in 1897 by R Marks a stonemason, for Cecil John Rhodes. It was used by Rhodes for the stabling of horses and mules during the several visits which he made to Nyanga during 1897 and 1900.

On his death in 1902, his Nyanga Estate was bequeathed in trust for the people of Zimbabwe. In May, 1974 the National Trust Zimbabwe acquired, from the Government, the right to occupy the building for the public display of manuscripts, photographs and other exhibits of interesting relating to Nyanga and persons and events connected with its history and development. The exhibition was officially opened by the Hon MHH Partridge on the 8th of November 1975. At that time the President of the National Trust Zimbabwe was Sir Athol Evans K.B.E, BA, LLB.

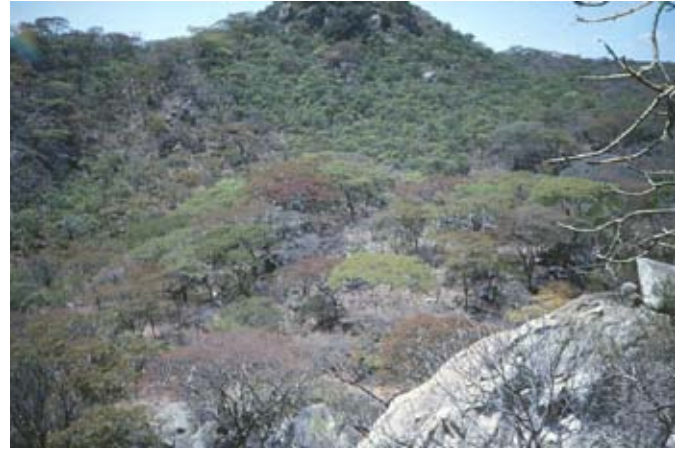
World's View: The property is set high on a hill that affords stunning views of the surrounding landscape. From an altitude of 2000m the escarpment drops 600m to the plain below. On top of the hill there is the large circular Astra Toposcope with numerous plaques of black granite around the perimeter with radiating lines indicating the direction and direct distance to thirty cities, towns and places of interest.

Penhalonga/Mutare: La Rochelle Estate; Fort Gomo Kadzamu & Murawa's Hill



La Rochelle Estate: The best known of the Trust's properties. It is situated in the Imbeza Valley, Penhalonga in the mountainous eastern border area, some 280 km from Harare and 20 km from Mutare. The house was built by Sir Stephen and Lady Virginia Courtauld in 1951 as a retirement home, and was donated to the National Trust in 1970.

La Rochelle Hotel and Restaurant operates at the property. Accommodation consists of 6 twin-bedded rooms and 2 double-bedded rooms. There are also self-catering cottages consisting of 1 double-bed cottage and 3 cottages with 5 twin-beds in each 2-roomed cottage. The Hotel offers full English Breakfast, and a Table d'Hote Menu in the evenings. Lunches comprise Light Snack menu, except on Sundays, when a Table d'Hote Menu is prepared subject to advance bookings.



Fort Gomo Kadzamu: Situated in the Penhalonga district this attractive area of Brachystegia (Miombo) woodland and broken granite terrain is some two hectares in extent.

A small stone fort is located at the top of a hill on the property and is typical of the many fortifications in the eastern half of Zimbabwe. Part of the Nyanga Cultural Tradition these lowland forts were associated with the Shona Dynasties that postdate the Great Zimbabwe Culture. The settlement probably dates to the 17th to the 19th centuries A.D.



Murahwa's Hill: A unique combination of cultural heritage and indigenous flora and fauna. There are traces of early hunter-gathers and on the south-western part of the hill there is an early Iron Age settlement of the Ziwa Period (200-400 AD) with a ruined stone-walled settlement higher up that may be associated with the Rozvi Dynasty in its upper levels (late 17th century). The hill is named after a Manyika village-head who was the last local occupant of the site. There are more recent villages of Headman Murahwa who lived here before relocating further south in the Save Valley.

The hill lies at the base of Christmas Pass on the western edge of Mutare. Traditionally it was protected in the past as a place of spirits, while latterly the ravages of seasonal fires have been prevented hence the maturity of the many indigenous trees and the unusual variety of microenvironments present.

Services Offered

Services that are offered by the NTZ, at various sites, include the following:

- Environmental – Birding, Indigenous trees/fauna/flora, Aloes/Orchids, different species of butterflies, beetles, moths and dragonflies, woodland/mountain walks
- Tourism - Accommodation, Event hosting (small conferences, weddings or company retreats), camping and caravanning, existence of the only Braille trail in Zimbabwe, for the enjoyment of partially blind people to experience nature.
- Education - Historical - Exhibitions of Manyika African culture, early European contacts, fallen heroes and tribal chiefs and Viewing historical sites i.e. the Ziwa Iron Age settlement.

President's Report to the 41st Annual General Meeting on 21st June 2014

Welcome and Introductory Remarks

This is my report as President of The NTZ and Chairman of the Council. I would like to start by thanking, sincerely, the NTZ Council that has worked tirelessly overcoming challenges, and for their professional approach in securing the future of NTZ.

In the past year (2013/14) the NTZ is now in a much better and stronger position, in all respects than it was previously, as you will see from the Regional reports from the Committee Chairs. There are still many challenges that lie ahead, as is normal with such an organisation. The NTZ has the passion, commitment, skills and preparedness for hard work from our Council and other independent advisors and members to enable us to continue to drive NTZ forward for the benefit of our wonderful country and its people.

Financial and Membership Matters

You will see from the NTZ audited financial statements that are presented herein that the financial position of NTZ has improved slightly but still remains at a very low key with cash resources of approximately \$6 700 at 31 March 2014, up from approximately \$4 200 previously. A small operating loss was incurred during the year ended 31 March 2014. This is a fairly common occurrence in such situations where income generated is then consumed for NTZ's activities and responsibilities and considering the economic climate within which NTZ operates within, this is an acceptable result. The overall total funds and reserves of NTZ are approximately \$283 000 as at 31 March 2014. NTZ Council is continually looking at ways of improving revenue streams for NTZ to then allow NTZ's further development.

At this point I would like to thank John Hyslop for his significant efforts throughout the year, in managing the NTZ finances and its accounting records and for enabling a clean audit report to be presented on the NTZ financial statements for the year ended 31 March 2014. The NTZ Council continues to try to attract more members. An additional effort is now being made to also attract corporate members. Membership is renewed from 1 April each year and at this time we have 168 paid up members which is up from 136 approximately this time last year. We continue to raise the profile of NTZ through the media, with presentations to and meetings with third parties and using Council network communications. We continue to look for additional membership benefits in an effort to make membership more attractive. We appeal to all NTZ's members to recruit new members to help secure the future of NTZ.

We have issued newsletters to our members on a regular basis in an effort to build closer relationships with our members and we have had positive responses. We will continue to issue newsletters as items arise and involve our members in NTZ's affairs wherever possible.

Education

We believe that a primary benefit and output that NTZ provides from its properties and other activities is in the Education arena. NTZ is able to highlight the importance of Zimbabwe's heritage, arts and culture to all its people and this is reflected in the new NTZ "payoff line" – Heritage is important, treasure it. We have liaised with the Museums and Monuments Commission of Zimbabwe and have approached The National Archives, with a view to working with them on matters of common interest. Education of young Zimbabweans remains a top priority of NTZ.

Publicity and Marketing

We held an important strategic workshop in mid-2012 to assess NTZ's overall position, consider the immediate and long term priorities and identify the business issues we needed to deal with. We are currently revisiting the output from that meeting and are currently updating and collating information on all of NTZ's areas of operations. NTZ Council will then produce a new strategic and business plan to take NTZ forward for the next 5 years.

We have continued to raise the profile of NTZ. We have prepared a 5 year marketing strategy and with specific targeted activities in a 5 year plan. I would like to thank Sharon Waterworth personally for all her efforts and guidance in these regards.

INTO and other external relationships

I was very privileged to travel to Entebbe in Uganda in late September 2013 to represent NTZ at the "15th International Conference of National Trusts" (ICNT). Over 200 delegates attended, representing 28 territories from around the world. This was the first such conference held in Africa. A lot of contacts were made with the organisations who attended. I made a presentation on the background and present position of NTZ and the Council's future plans. NTZ is the only registered National Trust in Africa!

We are liaising with the Uganda organisers of this 15th ICNT conference (Cross Cultural Foundation of Uganda "ccfu") about the possibility of Zimbabwe hosting an Africa Region Conference of Heritage organisations. Such a conference, if it materialises, would be held in advance of the next ICNT gathering that is to be held in England in September 2015. Such an event in Zimbabwe would help raise and improve the profile of and give a better understanding of the activities and wide level of historical, educational and tourism attractions in our country and within NTZ.

In October 2013, I was then able to visit the National Trust of England and Wales ("NTUK") in Swindon. I established a lot of contacts during numerous meetings with NTUK's departmental leaders and management.

As a result of these trips and meetings we have opened many doors and started relationships which will benefit NTZ in the future in seeking advice, support, skills and resources in its development.

We will continue to build relations with a large number of other Zimbabwe associations and organisations in the business, environmental, education, historical and financial sectors in areas that are important to NTZ.

I know that I and the NTZ Council look forward to hearing back from NTZ members and all other interested parties on any matters, concerns, if any, and constructive suggestions related to the activities and the future development of The National Trust of Zimbabwe.

Thank you again to the NTZ Council, the Regional Property Committees and working parties and all of those other independent persons and organisations who have actively contributed to the activities of NTZ over the last year. We look forward positively to the future ongoing development of The National Trust of Zimbabwe.

D.J. Scott

CHAIRMAN OF THE COUNCIL OF THE NATIONAL TRUST OF ZIMBABWE

21 June 2014



La Rochelle

Chairmans Report April 2014 - Nyanga Committee of The National Trust of Zimbabwe

This year began positively with the erection of two new road signs – indicating the direction of “RHODES MUSEUM AND HOTEL” on the main Nyanga Road and one on the Pungwe Road. Our thanks to all those involved in the negotiations and to NTZ and the Councillor who met the costs.

The long drawn-out negotiations on security of tenure and an acceptable lease came to a satisfactory conclusion in December, when the Minister signed the document and we were able to proceed with our new projects.

With funding from Dr Ines Grainger and the Don Grainger Memorial Trust (\$5000) and from the Australian Development Aid Programme, (\$8000) we have been able to tackle two ambitious projects –

- 1) refurbishment of the Loft, which has doubled the space available for displays and provided an area specifically for children's interests and activities; and
- 2) transformation of the original saddle room into the Don Grainger Reading and Research Room.

The first of two staircases is in place, leading to The Loft and lighting and insulation have been installed. We have received generous donations of reference books from people all over the country, and these are being catalogued by Ms Anne Derges. Dr Ines Grainger has donated to NTZ, her collection of trophies, regalia, books, historical photographs and memorabilia pertaining to the life of humanitarian, Col. Don Grainger. These will be displayed in cabinets and on shelves in the Reading Room.

The renovations have been undertaken by Mr Patrick Hallowes and his team (Pixalo Projects). We are grateful to Pat and his men for their excellent workmanship and personal interest. Donations of interesting articles continue to arrive – from far and wide. Some have already been added to displays and others are awaiting the new SPACE.

Most of the original displays have been changed in some way and we like to think that the “flow” has improved, and interest maintained with the continual changes. My thanks go to all Committee Members for their research – on wagons; traditional leadership (this in particular took Edgar many hours in the DAs' office); history of the churches, Rhodes Estate and the Terrace Builders. Interest is being shown by the local school teachers in Robert Soper's book and we feel that if we succeed in encouraging the schools to generate in their students, an interest and pride in their local heritage, we will have achieved one of our aims. The display on Early Development of the tourist industry needs further improvement.

Bubble Kuvonic's art work has added a new dimension to the pre-history exhibit. We now have displayed, our Mission and Vision Statements. During the year we have had visits from NTZ Chairman, David Scott and members of the Council. Mrs Grainger and her niece BetinaPasteknik spent time at the Museum, and Mrs Makogo (Rhodes Committee Chairman) and Mr Willie Dhlamlara (SOLON) both visited and gave advice and encouragement.

Michelle Mesley from Ndeipi published an article on the Exhibition in September 2013 and gave permission for us to use the page as a 'flier'. The Zimbabwean published an article on the Museum in February 2014. Our Treasurer, Mr GHawksley, has kept the books in excellent order and has somehow juggled the erratic cash flow in order to pay wages and expenses. One month NTZ generously gave some assistance.

Visitors are seasonable. We are always delighted to see groups of school children arriving, and congratulate Cain on coping admirably with these groups. Cain has also worked hard in the garden this past year and his efforts have been rewarded. Members have investigated the grave sites in the Nat. Parks and also the Pioneer Cemetery in Nyanga.

In closing, I wish to thank David Scott, Helen and John Hyslop and all members of the NTZ Council for their support and encouragement. Our gratitude goes too, to our funders, The Grainger Trust and the Australian DAP; without their generosity we would not have been able to progress to this extent.

To my Committee – without you there would be just a dusty, static Exhibition. Thanks to Merle who stood in while Pixie was away; you have both been wonderful secretaries. Geoff – thank you for holding the purse-strings – and to each one of you – thank you for your support and encouragement.

May we go from strength to strength in the year to come.

Thank you.
E A Logan
CHAIRMAN

Rhodes Nyanga Historical Exhibition

July, 2014 Update

Extensions to the RHODES NYANGA MUSEUM are almost complete, increasing the display area by over 100%. Due to generous funding by DAP (Australia), through the Australian Embassy in Zimbabwe, and by the Don Grainger Memorial Trust, through Dr. Ines Grainger, the loft of the historic Rhodes' Stables in Nyanga, Zimbabwe, is now accessible, and the former harness room is open to the public.

Two stairways – internal and external – have been constructed (according to international heritage building regulations), and the floor of the loft re-enforced in order to utilise the space for displays and a children's activity area. Insulation of the ceiling, installation of tube lighting and window panes have transformed the former animal fodder storeroom into a much-needed additional extension to the Museum. The loft has been named 'The Petheram Room' by the Museum Committee, in memory of Dick Petheram, author of the publication, "The History of Rhodes Nyanga Estate", who was responsible for procuring the original Rhodes' memorabilia and establishing the Museum in the 1970s for the National Trust of the then Rhodesia. The Petheram family is still involved in the progress of the Exhibition.

The Don Grainger Reading and Research Room (harness room) houses a rich collection of reference books donated by the Zimbabwe community and professionally catalogued. Apart from funds and person support, Dr Ines Grainger has donated her valuable collection of Don Grainger memorabilia to the NTZ for display in the Museum. Items include St. John, St. Lazarus and St. Constantine regalia and literature, medals, photographs of Rhodesian and Zimbabwean Olympic and Special Olympic teams, and pictures depicting some of the humanitarian projects initiated by the late Col. Don Grainger, and more recently, by the Don Grainger Memorial Trust.

Grainger was President of both the Council for the Blind, and the Zimbabwe Association for the Disabled and Paraplegics. He was Chairman of the Zimbabwe Leprosy Council, and Governor of Ranche House College for 33 years. Don was appointed Minister Plenipotentiary for the International Parliament for Safety and Peace, and accredited by the Government of Zimbabwe in 1995. It is an honour to bring to the notice of the Zimbabwean public, the work of a man who so modestly devoted his life to the people of this country.

The Grainger Room and Loft were officially opened on 26th April, 2014 by His Excellency, Australian Ambassador to Zimbabwe, Matthew Neuhaus and Dr. Ines Grainger, at a ceremony attended by seventy guests. National Trust Chairman, Mr. David Scott, Master of Ceremonies, welcomed guests and introduced the speakers – Nyanga Committee Chairperson, Ambassador Neuhaus, Dr. Grainger and Forester Ngorima (Parks and Wild Life Authority). Gifts of Robert Soper's book, "Terrace Builders of Nyanga", were presented to the gentlemen and bouquets of protea to the ladies by members of the Nyanga Committee. The Committee was congratulated on the progress achieved over the past three years.

Following the speeches, Dr. Grainger cut the ribbon across the door of the Grainger Reading Room, and with Ambassador Neuhaus, unveiled the handsome copper plaque commemorating the Opening of the Extensions. The plaque is now in place above the staircase landing. Visitors viewed the displays and then enjoyed an excellent tea served in the Wagon Shed – provided by the Rhodes Hotel and Members of the Museum Committee. Social interaction between members of all sectors of the Nyanga community and from Mutare and Harare, continued until well after dark!

The National Trust of Zimbabwe, particularly the Nyanga Committee, is grateful to the financiers of the renovation projects – initially the Beit Trust, and recently the Don Grainger Memorial Trust and DAP Australia - for their contributions towards the preservation and conservation of the community's national and cultural heritage, and the support of a gallery which aims at providing a connection between the past and the present.

Sadly the past month has shown a deficit in the coffers – owing to the lack of tourists and visitors in general. School groups and Colleges are encouraged to visit the museum, and entry charges are kept minimal. Covering expenses is a monthly challenge for the treasurer. We would ask all supporters of this project to spread the news that the RNHE is worthy of a visit!

E A Logan

Official Opening of the Rhodes Nyanga Historical Exhibition



Address by Forrester Ngorima NPWLA.



Mr Tendai Saruchera, representative for MP Willie Dhlamhlara, Edgar Nyagwaya.



Address by H E Ambassador of Australia Matthew Neuhaus.



Ambassador and Dr Grainger with E A Logan cutting the ribbon to the Don Grainger reading and research room



E A Logan holding commemorative plaque after unveiling.



Curator and staff of World's View



VIP's with bouquets of protea flowers.

Worlds View

Mr Rob Barrett, Regional Chairman

I am very pleased to report that the future vision for Worlds View 'The Protea and Wild Flower Conservancy' is being successfully implemented following the establishment of a boundary fence in 2014 after problems being caused by cows grazing on the flora thereby devastating the unique population of indigenous proteas and orchids on the site. It was then that the idea of establishing a 'Protea and Wild Flower Conservancy' on the site was born. The Committee established a relationship with Kirstenbosch the world famous botanical gardens in South Africa who very kindly agreed to send seeds and cuttings from eighteen different species. The 200 proteaceae that were planted in 2012/2013 in an enclosed area and designated the "Kirstenbosch Collection" are doing well and it is thought casualty rates are only 10%.

The Conservancy will greatly enhance the property and complement the local flora including: waratah, banksia, cynaroide, neriifolia and leucosprumum and it will increase the interest for visitors to Zimbabwe. The resident Wood Carvers are happy and are experiencing some upturn in business. School buses are now frequent visitors. Overall the flora of Worlds view is establishing itself well. The 15 Acacia Abyssinica (Nyanga Flat Tops) that were planted in 2011 will eventually form a massive sweep of cover over most of the developed area.

The 3 Erythrina Lysistemon (Lucky Bean Tree) are also doing well close to the gallery and the growth of all the small indigenous varieties of orchids, wild flowers and aloes that grow in the rocky outcrops is being carefully managed. Eventually the rest of the exotic pine trees will be removed and the eradication of the ever persistent and invasive Wattle continues.



Kirstenbosch collection (above)



In 2012/3 26 framed pictures of the flowers of Nyanga by Mary Clark (a local artist) were displayed together with a large framed montage showing the construction of the Connemara Lakes and the surrounding road. More material will be collected and displayed in time. There has been a constant stream of visitors, and I spoke to a few, who say they are impressed with the new gallery and feel of the property. Plans for the future include the fitting of a wood stove for warmth in the winter months that would also supply hot water for tea and coffee and the selling of locally made woollen rugs which will be of assistance to the community, as well as enhancing income and interest to the site and benefit the carvers enterprises. Various income raising projects are being considered in order to bring in further funds so that we may continue to improve the property in the future.

Fort Gomo, Sebakwe Poort and Mabukwene

Fort Gomo and Sebakwe Poort are already seriously degraded and Mabukwene has been neglected for a long time. All three properties require a dedicated committee to be established and to compile a Strategic Management Plan for their future usage along with funding to ensure that they are managed and utilised and do not degrade further.

Murahwa's Hill

Mr Des Becker, Chairman Mutare Regional Committee

The property has been undeveloped since it was acquired. The signage was lost/damaged/destroyed prior to 2005. In 2005 one of the Executive Council members worked together with an Archaeologist/Geographer/Botanist in order to assess the potential of the site. The conclusion was that the property would be best utilised as an Educational and Interpretative/Museum Centre. It is important that the centre blend into the existing environment. Drawings were produced detailing the design of the centre based on a traditional meeting place, with open sides, thatched roof, timber poles and an open amphitheater with low maintenance and cost. The building would not require any power since it utilised natural lighting. The display themes were also recommended by the specialist which would include: Early history - Stone Age, The Stone Ruins, flora and fauna and the geology of the area.

In addition, in order to raise a steady revenue stream, closely aligned organisations such as environmental, education, wildlife, museums etc. move their operations out to the site and pay rental to the NTZ. This would require capital expenditure for the building of an administrative hub. The structures would be built to look like a traditional homestead built in a cluster linked or surrounded with a fence of wooden poles.

In 2013 the NTZ successfully secured the sum of USD10 000.00 from the Curtain Foundation to build the centre on condition that the NTZ raises the balance of USD6 000.00 required. In 2014 a dedicated Murahwa's Hill Committee was established in order to complete the project.

The Future Vision for Murahwa's hill

Funds are currently still being sought to achieve the aim of:

'Establishing an Educational and Interpretative Centre/Museum on the property'



Murahwa's Hill

La Rochelle Regional Chairman Report

Sadly the condition of La Rochelle has been declining over the last two decades due to the severe lack of funding made available for maintenance of the buildings and gardens. The hotel that was being operated at the property was negatively affected by the decline in tourism in Zimbabwe (international, regional and local) and the hotel has not been able to generate sufficient rental income for the NTZ to pay for the necessary repairs and estate staff. NTZ wish to restore the commercial viability and sustainability of the property to ensure its continued maintenance for the foreseeable future and to reduce its reliance on funding from the NTZ. The NTZ understands that restoration, maintenance and development of the property will require a long term financial arrangement which the Trust is unable to secure at present.



Therefore, in 2013 the NTZ engaged with Acumen Africa Consulting (Pvt) Ltd (Acumen), a management consulting firm, to raise the necessary funding and retain the necessary skills to help achieve Sir Stephen Courtauld's vision of La Rochelle while adapting the estate to the economic and educational realities of 21st century Africa. Acumen Africa's vision for La Rochelle is a financially and environmentally sustainable centre of education, culture and arts, leveraging the historical, architectural and natural legacy of the Courtaulds. The vision is:

'Develop La Rochelle into a creative 'nexus' of educational, cultural and environmental excellence in Southern Africa'.

The proposed project mission is to inspire creativity through multidisciplinary programming. The La Rochelle Centre will provide leaders, teachers, artists and professionals with the support they need to think and to create, to develop solutions, and to make positive things 'happen' in a complex continent. A La Rochelle project working party was established in order to drive the project plans forward to achieve long term sustainability. Over the course of 2014, Acumen and the NTZ will work with the National Trust UK and local professionals to create a new (phased) development blue print for the centre with accurate financial costing and revenue forecasts.

The project will be achieved over time commencing in 2014 with a completion date of 2022 and will take place in the following phased manner:



Acumen has calculated that the value of the total investment is approximately US\$ 3-5 million.

The project is currently in a 6- 12 Months Consultancy, Management and Evaluation period whereby Acumen are undertaking an evaluation of the property with overall vision and strategy in mind. Then a Development Plan will be compiled drawn up on the back of property evaluation and analysis with input from NTZ.

Whilst the La Rochelle development Plan is being identified and finalized in January 2014 the hotel was closed down for badly needed maintenance and refurbishment. Acumen begun to carry out critical repairs and maintenance and the upgrading of the existing facilities to ensure the house, grounds and hotel is reopened to the public by January 2015.

THE NATIONAL TRUST OF ZIMBABWE FINANCIAL STATEMENTS 31 MARCH 2014

REPORT OF THE INDEPENDENT AUDITOR TO THE MEMBERS OF THE NATIONAL TRUST OF ZIMBABWE

I have audited the financial statements set out on pages 3 to 8 for the year ended 31 March 2014.

Respective Responsibilities of the Trustees and Auditors

The financial statements are the responsibility of the members of the executive committee. My responsibility is to express an opinion on these financial statements based on my audit.

Scope

I have conducted my audit in accordance with approved International Standards on Auditing. Those standards require that I plan and perform the audit to obtain reasonable assurance about whether the financial statements are free of material misstatement. An audit includes:

- examining, on a test basis, evidence supporting the amounts and disclosures in the financial statements
- assessing the accounting principles used and the significant estimates made by the executive committee and
- evaluating the overall financial statement presentation.

In common with other similar Trusts, due to the nature of certain income received, it is not possible to verify that all income has been brought to account, although I have no reason to suppose that there are any omissions.

Audit opinion

Subject to the foregoing statement, in my opinion, the financial statements in all material respects give a true and fair view of the financial position of the Trust as at 31 March 2014 and of its Income and Expenditure for the year then ended, are in conformity with policies suitable for an organisation of this nature and in compliance with the National Trust Act(Chapter 25:12).

Chartered Accountant (Zimbabwe)



View from Murahwa's Hill

THE NATIONAL TRUST OF ZIMBABWE BALANCE SHEET AS AT 31 MARCH 2014

	Notes	2014	2013
ACCUMULATED FUNDS			
Balance 31 March 2013		5,352	4,812
Surplus as per the annexed account		393	540
		5,745	5,352
Capital reserve		279,741	279,741
		285,486	285,093
LA ROCHELLE ESTATE FUND			
Balance 31 March 2013		(8,040)	(7,105)
Deficit per the annexed account		(706)	(935)
		(8,746)	(8,040)
BEIT TRUST		6,384	6,384
TOTAL FUNDS		\$283,124	\$283,437
FIXED ASSETS			
Donated and leasehold property and capital costs thereon	3	273,181	273,181
Motor vehicle, tractor furniture and equipment	4	4,412	5,517
		277,593	278,698
INVESTMENTS			
At valuation	5	334	244
CURRENT ASSETS			
Debtor D. Scott INTO conference air fare		806	-
Cash resources		5,893	4,180
Capital Bank Limited		-	315
CABS		710	-
		7,409	4,495
CURRENT LIABILITIES			
Prepaid subscriptions		1,365	-
Creditor- G. Honeyman fencing World's View		847	-
		2,212	-
Net Current Assets		5,197	3,511
		\$283,124	\$283,437
<div> <div> President/Chairman Treasurer/Secretary </div> <div> MEMBERS OF THE EXECUTIVE COMMITTEE Harare 20 June 2014 </div> </div>			

INCOME AND EXPENDITURE ACCOUNT

YEAR ENDED 31 MARCH 2014

INCOME 2014

	Total	Headquarters	La Rochelle	Mabukuwene	World's View	Nyanga Barn
Gate receipts	5,150	-	190	-	4,273	687
Rental of property	16,518	-	15,918	-	600	-
Sale of Plants	2,460	-	2,460	-	-	-
Subscriptions	1,340	975	350	-	15	-
Sundry revenue	6,518	2,281	3,815	-	-	422
Shop	245	-	-	-	-	245
	\$32,231	3,256	22,733	-	4,888	1,354

EXPENDITURE 2014

Administration	3,262	308	592	-	1,625	737
Depreciation	1,105	90	1,015	-	-	-
Electricity and rates	3,305	-	3,305	-	-	-
Repairs and maintenance	3,954	-	1,399	-	2,435	120
Salaries, wages and expenses	18,549	-	14,759	-	2,250	1,540
Vehicle expenses	2,369	-	2,369	-	-	-
Travel	-	-	-	-	-	-
Purchases - shop	-	-	-	-	-	-
	\$32,544	398	23,439	-	6,310	2,397

SURPLUS/(DEFICIT) FOR THE YEAR

	(313)	2,858	(706)	-	(1,422)	(1,043)
Allocated as follows 2014						
- Accumulated funds	393					
- La Rochelle Estate Fund	(706)					
- Mabukuwene Revenue Fund	-					
	\$(313)					

INCOME 2013

	Total	Headquarters	La Rochelle	Mabukuwene	World's View	Nyanga Barn
Gate receipts	5,883	-	417	-	3,907	1,559
Rental of property	18,665	-	18,665	-	-	-
Sale of Plants	2,762	-	2,762	-	-	-
Subscriptions	2,310	1,665	465	-	-	180
Sundry revenue	440	415	25	-	-	-
Shop	2,395	-	-	-	-	2,395
	\$32,455	2,080	22,334	-	3,907	4,134

EXPENDITURE 2013

Administration	982	391	29	-	500	62
Depreciation	1,379	112	1,267	-	-	-
Electricity and rates	4,499	-	4,499	-	-	-
Repairs and maintenance	5,110	-	2,352	-	2,413	345
Salaries, wages and expenses	17,130	-	13,556	-	1,784	1,790
Vehicle expenses	1,566	-	1,566	-	-	-
Travel	-	-	-	-	-	-
Purchases -shop	2,184	-	-	-	-	2,184
	\$32,850	503	23,269	-	4,697	4,381

SURPLUS/(DEFICIT) FOR THE YEAR

	(395)	1,577	(935)	-	(790)	(247)
--	-------	-------	-------	---	-------	-------

INCOME AND EXPENDITURE ACCOUNT YEAR ENDED 31 MARCH 2014 (Continued)

Allocated as follows 2013

- Accumulated funds	540
- La Rochelle Estate Fund	(935)
- Mabukwene Revenue Fund	-
	<u>\$ (395)</u>

CASH FLOW STATEMENT AS AT 31 MARCH 2014

SOURCES OF CASH

Surpluses:

Head Quarters

Worlds View

Nyanga Barn(Museum)

Deficit: La Rochelle

Nyanga Barn

World's View

NET TOTAL SURPLUS

Add Non cash item Depreciation La Rochelle

TOTAL OPERATING SURPLUS

Decrease in Cash balances from previous year

Capital Bank

Prepaid subs

Creditor - G. Honeyman. Fencing World's View

TOTAL SOURCES OF CASH

Applied as follows:

Increase in cash balances from previous year

CABS

Cash

D. Scott INTO conference

Increase in value of investment

TOTAL CASH APPLIED

2014	2013
2,858	1,577
-	-
-	-
2,858	1,577
(706)	(935)
(1,422)	(247)
(1,043)	(790)
(313)	(395)
1,105	1,379
792	984
315	-
1,107	984
1,365	-
847	-
\$3,319	\$984
710	-
1,713	984
806	-
90	-
3,319	984
\$3,319	\$984

NOTES TO THE FINANCIAL STATEMENTS

31 MARCH 2014

1. **GENERAL**

These financial statements are expressed in United States dollars.

2. **ACCOUNTING POLICIES**

- 2.1. Accounting convention. The financial statements are prepared under the historic cost convention, with the exception that all fixed assets have been revalued to reflect their estimated value in United States dollars.

No other procedures have been adopted to reflect the impact on the financial statements of specific price changes or changes in the general level of prices.

- 2.2. Taxation. The Commissioner of Taxes in a letter dated 16 April 1993(Ref:Com1051/F.86) exempted the Trust from income tax and withholding tax.

- 2.3. Depreciation of fixed assets. No depreciation is provided on capital costs incurred on donated and leasehold property. Insofar as this relates to buildings this is not in accordance with International Reporting Standards.

Depreciation is provided on other fixed assets on the reducing balance basis at an annual rate of 20% estimated to write off their cost over their expected useful lives.

- 2.4. Revaluation. Fixed assets were revalued by the Committee from time to time and the surplus arising therefrom is reflected as a capital reserve.

3. **DONATED AND LEASEHOLD PROPERTY AND CAPITAL COSTS THEREON**

Donated Property

Stand 2508 Mutare Township (Murahwa's Hill) donated by the

Municipality of Mutare

52,500 52,500

Lot 4 of Banks, Mutare District donated by Mr J.P. Valentine

1,750 1,750

World's View, Stand 17 Little Connemara Township, Nyanga

donated by Gouvernement; Lots 2,7,8 of Little Connemara,Nyanga

donated by Little Connemara (Private) Limited

1,750 1,750

La Rochelle Estate in District of Mutare donated

by Lady Virginia Courtauld

175,000 175,000

Mabukuwene in the District of Bulawayo donated by

the Thomas Meikles Trust and Investment Company (Private) Limited

35,000 35,000

Leasehold Property

Rhodes Nyanga Barn

2 2

Improvements to date

7,149 7,149

Sebakwe Poort Park

30 30

\$273,181 \$273,181

NOTES TO THE FINANCIAL STATEMENTS

31 MARCH 2014 (Continued)

4. **MOTOR VEHICLES, TRACTORS, FURNITURE AND EQUIPMENT**

	Valuation	Aggregate Depreciation	Book Value	2013
Motor Vehicles	2,000	1,345	655	819
Tractor and equipment	2,875	1,933	942	1,178
Furniture and equipment	2,840	1,909	931	1,164
Fencing	4,656	3,131	1,525	1,907
Office equipment	1,094	735	359	449
	\$13,465	9,053	4,412	5,517

The amount of depreciation changed in the financial statements is as follows.

Motor vehicle	163
Tractor	236
Furniture and equipment	323
Fencing	383
	\$1,105

5. **INVESTMENTS**

	No. of Shares	Market Value	2013
Meikles Limited	1,767 revalued	334	244
Halogen Limited (delisted ex ZSE)	466 revalued	nil	
		\$334	\$244



NATIONAL TRUST OF ZIMBABWE

30 Hawkshead Drive, Borrowdale, Harare, Zimbabwe
Tel: 04 860202 E-mail: ntzimbabwe@gmail.com

ANNUAL MEMBERSHIP:
01 April 20__ to 31 March 20__ Number _____

Our Mission:

To be the custodians of those properties and sites of cultural heritage and natural beauty which we hold in trust and to maintain and manage them for the benefit and enjoyment of the people of Zimbabwe and our friends now, and as a legacy for future generations.

MEMBERSHIP TYPE	FEE PER ANNUM	BENEFITS
Individual member	USD 15.00	<ul style="list-style-type: none">• Free entrance to NT properties worldwide that have reciprocity with NTZ;• Free entrance to NTZ properties in Zimbabwe;• Quarterly E-newsletter;• Discounted tickets for selected productions at Reps Theatres;• Free entry to National Galleries;• 10% off a Scotty Photographic Session• 10% selected rugs/throws Hayhill Weavers
Corporate	USD 200.00	<ul style="list-style-type: none">• As above for a total of 6 employees plus:• Public acknowledgement at all sites, newsletters and facebook page.

----- (Cut Here)
Please cut and complete and return this section only by email/post to the National Trust Zimbabwe

Membership Application for the Period 01 April 20__ – 31 March 20__

Name: _____

Address: _____

Phone: _____ E- mail: _____

Membership type: (please tick) ☐ Individual Membership ☐ Corporate Membership

I would like to make a donation: Donation USD \$ _____ Membership USD \$ _____

Membership card: (please tick) ☐ Please post it to me ☐ I will collect it

Membership Number: _____ Total Paid USD \$ _____

Please make payment either to: CABS Account Number: 1002855012 and e-mail/post the deposit slip and completed membership form to Mr J Hyslop or make a cash payment during office hours to:

Harare: Mr J Hyslop - 30 Hawkshead Drive, Borrowdale, Telephone: 04-860 202 E-mail: hyslop@mango.zw

Mutare: Mrs N.Bauer - Telephone: 020-60396 E-mail: anybauer4@gmail.com

Nyanga: Mrs Edone-Ann Logan - Telephone: 029-3195 E-mail: leecrofts@bsatt.com

THANK YOU FOR SUPPORTING THE NATIONAL TRUST OF ZIMBABWE