



National Trust of Zimbabwe

ESTABLISHED 1960

2015

ANNUAL REPORT

Member of International National Trusts Organisation
and the Global Heritage Network

Reciprocity with National Trusts worldwide and
Stichtings Kasteelen en Geldersch Landschap in the Netherlands

Contact Details:

SECRETARIAT

30 Hawkshead Drive, Borrowdale,
Harare, Zimbabwe

Email: info@ntoz.org

E-mail: hyslop@mango.zw

REGIONAL COMMITTEES

Nyanga:

Mrs Edone-Ann Logan:

E-mail: leecrofts@bsatt.com

La Rochelle

Mr Ross Whiting

E-mail: ross@acumenafrika.com

Mutare:

Mr C Fernades

Email: carlfernades@gmail.com

Worlds View:

Mrs Gill Honeymoon

Email: honey1103@hotmail.co.uk

Like us on Facebook

National Trust Zimbabwe

<http://ntoz.org>

<http://ntzimbabwe.org>



View from World's View



View from Murarhwa's Hill

Table of Contents

About The National Trust of Zimbabwe	1
The NTZ Governing Body	1
Mission Statement	1
Overall Aims and Objectives of the Trust	1
The Structure of the National Trust of Zimbabwe	2
INTO Membership	2
NTZ Properties	4
Services Offered	9
Technological Advances for the NTZ	10
Chairman's Report to the 42nd Annual General Meeting	11
Rhodes Nyanga Historical Exhibition – Annual Report – 2015	15
Worlds View - 2015 Report	17
La Rochelle - 2015 Report	20
Financial Statements	
Report of the Independent Auditor	23
Balance Sheet	24
Income and Expenditure Account	25
Cash Flow Statement	26
Notes to the Financial Statements	27
Membership form	



About the National Trust of Zimbabwe

The National Trust was originally founded in the United Kingdom in 1895 by three Victorian philanthropists - Miss Octavia Hill, Sir Robert Hunter and Canon Hardwicke Rawnsley. Concerned about the impact of uncontrolled development and industrialisation, they set up the National Trust to act as a guardian for the nation in the acquisition and protection of threatened coastline, countryside and buildings. More than a century later the National Trust remains very much alive and a similar sister organization, The NTZ was established in 1960 by the National Trust Act with the same aim of protecting and managing properties for future generations to enjoy.

Some of our properties are held in perpetuity so that their future protection is secure. The others are open to visitors and we are constantly looking at ways in which we can improve our services.

The NTZ Governing Body

The National Trust act is assigned to the Minister of Environment, Water and Climate Change. It is administered and controlled by a voluntary Council consisting of a President and not less than 10 or more than 20 members of whom not more than 18 are elected at an annual general meeting of members and three are appointed by The Ministry.

Mission Statement

'To be the custodians of those properties and sites of cultural heritage and natural beauty which we hold in trust and to maintain and manage them for the benefit and enjoyment of the people of Zimbabwe and our friends now, and as a legacy for future generations.'

Overall Aims and Objectives of the Trust

The aims and objectives of the NTZ are as follows:

- (a) to accept and hold property in trust for any public purposes and to act in trust for or as Trustee of any property devoted to public purposes in accordance with the conditions of such trust;
- (b) to promote for the benefit of the people of Zimbabwe the permanent preservation and protection of:
 - i). lands and buildings of national, archaeological, historical or aesthetic interest; natural resources, animal or bird life and trees or flora;
 - ii) objects or collections of objects of any description having national, archaeological, historical or aesthetic interest, including furniture, works of art, stamps and literature;
- (c) to provide the public with access to and enjoyment of the lands, buildings, resources and objects mentioned in (b) above;
- (d) to maintain or manage or assist in maintaining or managing lands and buildings for the purpose of public recreation, entertainment, resort or instruction.

Office Bearers

President	Mr. D. Scott
Vice Chair	Mrs S Waterworth
Treasurer	Mr J.G. Hyslop
Secretary	Mr C. Hyslop
Legal Practitioners	Honey and Blanckenberg - Harare

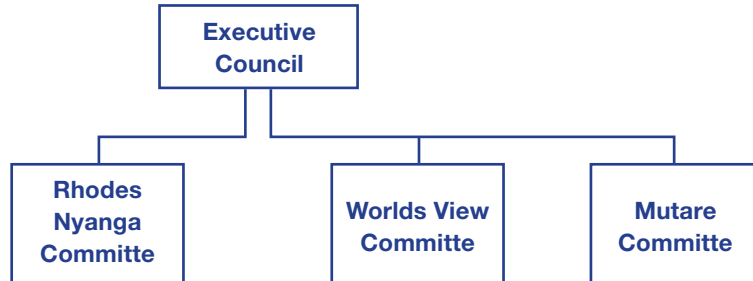


The Structure of the National Trust of Zimbabwe (NTZ)

The NTZ operates using a two level structure as follows:

The Executive Council acts as the overall governing body

Four Regional Committees manage their portfolio of properties, ie membership, sales, marketing, finance, media and so on.



A part-time honorary secretary and a part-time bookkeeper manage the NTZ's headquarters in Harare.

An external auditor is appointed with the approval of the Minister of Environment, Water and Climate Change and audited accounts are submitted to the Ministry on an annual basis.

INTO Membership

The NTZ is part of the International National Trusts Organisation (INTO) which is a non-governmental group founded in 2007. INTO was established to promote the conservation and enhancement of the natural and cultural heritage of all nations for the benefit of the people of the world. INTO has close links with organizations such as: UNESCO, UNEP, ICOMOS, IUCN and Europa Nostra.

Currently, INTO represents about 55 million individual members and countless millions of visitors to sites and properties across more than 25 countries.

INTO are actively involved in various initiatives including conserving and enhancing existing built resources, most notably by the viable re-use of historic and older buildings, greening of existing building stock, and reinvestment in older and historic communities and managing land in a sustainable way.



World's View

Climate Change

INTO and its associates have been urging world leaders to take strong and decisive action to address climate change and its impacts on heritage through both mitigation strategies that reduce climate change and adaptation strategies to cope with its unavoidable consequences.

They have pledged to work with governments, agencies and protocols worldwide such as the UNEP Convention on Biological Diversity and the UNESCO World Heritage Committee programme to tackle climate change and thereby protect the world's natural and cultural heritage now and for the future. Conscious of their role as custodians and repositories of heritage INTO has pledged to take action to address their own carbon emissions and thereby to be exemplars of best practice in this regard.

INTO observes that globally progress has been too slow in achieving the necessary reforms to take the action and adopt the strategies specified in the Declaration on Climate Change. INTO continues to take a proactive stance on the issue of climate change and as such participates in the annual UNFCCC Climate Change Conferences held worldwide.

Africa Regional Forum

Members of the NTZ attended the 2015 Annual INTO conference held in Cambridge, United Kingdom. During the conference a new INTO Africa Group was established of which the NTZ is a member. The new INTO Africa group brings together a vibrant network of African Heritage Organisations that will share ideas and resources, develop a continent-wide voice, promote and influence on African cultural heritage matters.

Funding

Sources of funding for the NTZ include rents, annual subscriptions, donations and bequests, admission charges to properties, hire charges for the use of halls and grounds, and the proceeds of sales of nursery plants and cut flowers.

Staffing

A part-time honorary secretary and a part-time bookkeeper manage the NTZ's headquarters in Harare. An external auditor is appointed with the approval of the Minister of Environment, Water and Climate.

Membership Benefits

Being a member of the NTZ has benefits both inside the country as well as around the world:

Zimbabwe

The Trust has a growing membership. Members enjoy the following benefits:

- Free entrance to NTZ properties in Zimbabwe
- Quarterly E-newsletter
- Discounted tickets for selected productions at Reps Theatres
- Free entry to National Galleries
- 10% off a Scotty Photographic Session;
- 10% selected rugs/throws Hayhill Weavers
- 10% off accommodation at La Rochelle Country Hotel
- Reciprocal membership with Bird Life Zimbabwe and Tree Society

United Kingdom

The NTZ has reciprocity with the National Trust of England, Wales and Northern Ireland and the National Trust of Scotland. In terms of arrangements with these Trusts, members are entitled to free admission to all of the many outstanding National Trust properties throughout England, Wales, Northern Ireland and Scotland upon production of a valid National Trust of Zimbabwe membership card. This represents a considerable benefit to members of the Trust who visit the United Kingdom.

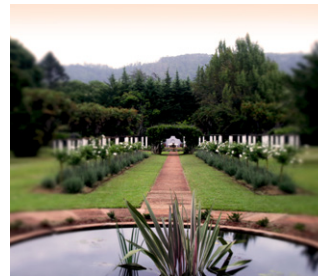
Worldwide

Through reciprocal arrangements with the National Trusts in Guernsey, Jersey, Barbados, Ireland, Malaysia, Bahamas, Bermuda and New Zealand and with the Australian Council of National Trust's, and the Stichting het Vrienden der Geldersche Kasteelen and Stichting het Geldersch Landschap in the Netherlands Trust members enjoy free admission to the numerous properties of the National Trusts in those countries.

National Trust of Zimbabwe Properties

The Trust manages and controls the following seven properties with the help of its Executive Council and Regional Committees who are all voluntary workers.

La Rochelle Estate



La Rochelle estate is the best known of the Trust's properties. It is situated in the Imbeza Valley, Penhalonga in the mountainous eastern border area, some 280 km from Harare and 20 km from Mutare.

The house was built by Sir Stephen and Lady Virginia Courtauld in 1951 as a retirement home, and was donated to the National Trust in 1970.

A leading Professor of Architecture described it as follows:

"La Rochelle is a rare example in Africa of a major early Modern Movement (in architectural terms) private house, and almost unique in Zimbabwe, given the quality of its architectural detailing and of its interior decoration, especially in the Fantasia room and the Peacock cottage."

During the time that they lived here, La Rochelle was a Mecca for important local and overseas people from all walks of life, and included artists and film stars, as well as influential politicians, in addition to family members. Most of these distinguished visitors were asked to engrave their signatures with a diamond-tipped stylus on the two large end windows which are of great historical importance.

The Courtauld's were patrons of the arts and they funded the building of the Courtauld Theatre, the Queen's Hall, and the Rhodes Club in Mutare, the Kukwanisa Agricultural School at Watsomba, and the National Gallery and the College of Music in Harare.

In June 2014 the National Trust with Acumen Africa, a host of consultants and multitude of contributors began the restoration of the property to its former glory, through the renovation of the buildings and rejuvenation and redesign of the gardens.

In 2015 The La Rochelle Country House opened. Accommodation consists of seven beautifully appointed and individually designed suites in the historic Courtauld House, one free standing West Wing comprising of 5 rooms and a honeymoon suite situated a small distance from the Country House overlooking the dam. All rooms reflect the elegance of the Art Deco and 1920's era. There are also more secluded single and family cottages available.

In addition to accommodation there is the La Rochelle Restaurant, Main Lounge, Coffee Shop, Snuggery Bar and Day Lounge and excellent small conference and function facilities including weddings.

The La Rochelle estate has a large unique botanical garden covering 20 acres of land, established with the professional help of the UK Horticulturist John Henry Michell, with exotic plants and trees gathered from all over the world. The indigenous wild bushlands were carefully preserved. There are numerous walking paths around the gardens.

There are interesting exotic trees in the arboretum as well as palms, cycads, azaleas and other flowering shrubs. This diversity provides ideal habitats for a large variety of bird species.

An orchid house was built and filled with exotic and indigenous orchids and contains the Peter Horrocks collection of rare *Phalanopsis*.

For hotel and wedding reservations please e-mail Mr Ross Whiting: ross@acumenafrica.com

Rhodes Nyanga Historical Exhibition



The Exhibition is located in the Rhodes Nyanga National Park. The building is known as Rhodes Stables, built in 1897 by R Marks a stonemason, for Cecil John Rhodes. It was used by Rhodes for the stabling of horses and mules during the several visits which he made to Nyanga during 1897 and 1900.

On his death in 1902, his Nyanga Estate was bequeathed in trust for the people of Zimbabwe. In May, 1974 the National Trust Zimbabwe acquired, from the Government, the right to occupy the building for the public display of manuscripts, photographs and other exhibits of interesting relating to Nyanga and persons and events connected with its history and development.

The exhibition was officially opened by the Hon MHH Partridge on the 8th of November 1975. At that time the President of the National Trust Zimbabwe was Sir Athol Evans K.B.E, BA, LLB.

The displays include early Manyika Africa culture, early European contacts and the first years of colonial rule, fallen heroes and tribal chiefs, Chief Tangwena and the struggle for Zimbabwe and the development of the Nyanga tourism and agricultural industries.

The building also contains a collection of archaeological material from the Nyanga district. Rhodes' equipment and household furniture.

In 2013/2014 the display area in the museum was extended up into the loft and the Colonel Don Grainger Reading Room was also established. An external staircase was fitted for access to the second floor loft and sky lights were fitted into the roof.

The extension was officially opened on 26th April, 2014 and has transformed the former animal fodder storeroom into a much-needed additional extension to the Museum. The loft has been named "The Petheram Room" in memory of Dick Petheram, author of the publication, "The History of Rhodes Nyanga Estate", who was responsible for procuring the original Rhodes' memorabilia and establishing the Museum in the 1970's for the National Trust of the then Rhodesia.

The Don Grainger Reading and Research Room (formerly the harness room) houses a rich collection of reference books donated by the Zimbabwe community and professionally catalogued.

The National Federation of Women's Institutes of Zimbabwe donated a small collection of valuable badges plus funds with which to construct a secure glass cabinet to display the articles, and to make a display board for the history of the WI, with particular reference to the Nyanga Institutes.

The Museum enjoys visitors all year round and school groups throughout the school term times.

In 2014/15 further display boards were included and a display of photographs, grains and lists of “Traditional Foods” was added to “Traditional Tools and Implements” and “Traditional Musical Instruments”.

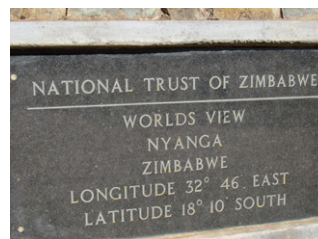
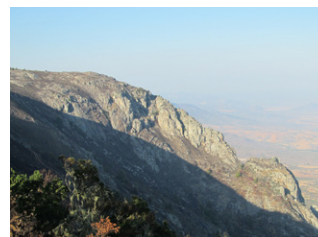
A Children’s Reading Area was also established in the Younger Visitors’ space.

In early 2015, with funding from the International National Trusts Organisation, a Cultural Heritage Education project commenced. The project focuses on heritage management and is a community-led cultural program.

The project will see the development and dissemination of educational materials and information to the visitors of the RNHE and also implement youth heritage education and provide an area where small groups participate in ‘Cross Cultural’ programme which will raise public consciousness of the value of Zimbabwe’s cultural heritage.

The project is inclusive of indigenous heritage and the schools/youth outreach program will be implemented/extended.

World’s View



The property is set high on a hill that affords stunning views of the surrounding landscape. From an altitude of 2000m the escarpment drops 600m to the plain below. On top of the hill there is the large circular Astra Toposcope with numerous plaques of black granite around the perimeter with radiating lines indicating the direction and direct distance to thirty cities, towns and places of interest.

The construction of the Toposcope for the National Trust Zimbabwe was made possible through generous and public spirited contributions from the following companies: Astra Holdings Limited, Construction Associates (Pvt Ltd) and Carrara Marble (Pvt Ltd).

The area is particularly interesting for botanists and ornithologists, comprising of vegetation types associated with either the basal granite or the dolerite cap.

The mist belt area, of some 70 hectares, is located on the western edge of the Nyanga Downs plateau.

Although not always clear there are traces of early stone walling in the grasslands and adjacent kopjes. The earliest stage of the Nyanga Tradition is represented by a number of large, stonewalled settlements that crown some of the major peaks in the northern Nyanga highlands between World’s View and Chirimanyimo Hill.

They are also found on some of the higher peaks of the Nyanga Downs. They date from the 14th to 15th centuries and lie between 2,000-2,400m above sea level in exposed locations unsuited to traditional occupation.

The sites are characterised by small, walled hollows scattered amongst the boulders and linked by low-walled enclosures. They are large sites suggesting nucleated villages. The most extensive site on Chirimanyimo Hill may represent the residence of the local chief.

The enclosures were built as a double line of vertical stones, earth-filled in between. These may once have

supported a hedge. The larger walled hollows probably protected livestock from the elements and are the prototype for later pit-structures. They had cobbled stone floors and in one of those excavated a grave was found dug through this floor. The smaller walled

hollows were probably houses, the walls supporting a low roof.

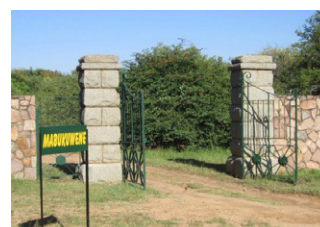
These villages were built at a time of a cooler, drier climate. They would have been very cold in winter, although it is possible that the cloud base was not as low as it is today so there was probably less, persistent mist.

In 2012 a small extension added to the office, now known as 'The Gallery' where 26 framed pictures of the flowers of Nyanga by Mary Clark, a local artist, are displayed together with a large framed montage showing the construction of the Connemara Lakes and the surrounding road.

In 2013 the NTZ established a relationship with Kirstenbosch, the world famous botanical gardens in South Africa. Seeds from 18 different protea species were generously donated by Kirstenbosch for planting in the new "Protea and Wild Flower Conservancy".

A site has been selected, on a rocky kopje in the enclosed area, designated for the 'Kirstenbosch Collection (proteacea)'. Planting will commence in 2016.

Mabukuwene



Mabukuwene means 'the look-out' or 'high point'. The view point is built upon a rocky outcrop 1 422 m above sea level. The property is situated a few kilometres south of Bulawayo City centre and consists of 12 hectares of indigenous trees and plants set in an unspoilt area of kopjes whose distinctive pink hue distinguishes it from other rocky environments in and around Bulawayo.

There is a 360° view point of Bulawayo from the open-sided thatched rondavel. The property was donated to the National Trust of Zimbabwe by the Thomas Meikle Trust in 1979 and partly restored in 1980 by the Aloe Society and the National Trust of Zimbabwe.

Sebakwe Poort, Kwe Kwe



This 262 hectare property is situated near Kwekwe. It is essentially an area of natural and unspoiled woodland comprising a large number of species of indigenous trees, including many fine specimens of several different Acacia species.

The Sebakwe River flows through the property and the poort (gorge), is an impressive sight.

Fort Gomo Kadzamu



Situated in the Penhalonga district this attractive area of *Brachystegia* (Miombo) woodland and broken granite terrain is some two hectares in extent.

A small stone fort is located at the top of a hill on the property and is typical of the many fortifications in the eastern half of Zimbabwe. Part of the Nyanga Cultural Tradition these lowland forts were associated with the Shona Dynasties that postdate the Great Zimbabwe Culture. The settlement probably dates to the 17th to the 19th centuries A.D.

Murawa's Hill



A unique combination of cultural heritage and indigenous flora and fauna. There are traces of early hunter-gathers and on the south-western part of the hill there is an early Iron Age settlement of the Ziwa Period (200-400 AD) with a ruined stone-walled settlement higher up that may be associated with the Rozvi Dynasty in its upper levels (late 17th century). The hill is named after a Manyika village-head who was the last local occupant of the site. There are more recent villages of Headman Murahwa who lived here before relocating further south in the Save Valley.

The hill lies at the base of Christmas Pass on the western edge of Mutare. Traditionally it was protected in the past as a place of spirits, while latterly the ravages of seasonal fires have been prevented hence the maturity of the many indigenous trees and the unusual variety of microenvironments present.

Services Offered

Services that are offered by the NTZ, at various sites, include the following:

- Environmental – Birding, Indigenous trees/fauna/flora, Aloes/Orchids, different species of butterflies, beetles, moths and dragonflies, woodland/mountain walks
- Tourism - Accommodation, Event hosting (small conferences, weddings or company retreats), camping and caravanning, existence of the only Braille trail in Zimbabwe, for the enjoyment of partially blind people to experience nature.
- Education - Historical - Exhibitions of Manyika African culture, early European contacts, fallen heroes and tribal chiefs and Viewing historical sites i.e. the Ziwa Iron Age settlement.



Makukuwene



Technological Advances for the NTZ

Good technological progress was made over the course of the year with Sharon Waterworth, Vice Chair leading the way. Sharon, in addition to her duties as Vice-Chair, was instrumental along with substantial help from Bill Tuner of INTO and Ian Fawcett of Canada Change Consultants, in establishing the NTZ website [wwwhttp://ntoz.org](http://ntoz.org) and <http://ntzimbabwe.org>. We now have an online presence. This is a major step forward for the NTZ and very exciting for us, for our members and potential new members. Please visit the site and take time to enjoy the information and photographs. We also encourage those of you with FACEBOOK access to like our very active Facebook page: <https://www.facebook.com/pages/National-Trust-of-Zimbabwe>.

Sharon also lead the way for the re-designing of the NTZ newsletter using Wordpoet. The new newsletter is now distributed via the NTZ website thus saving a considerable amount of time and effort for Fira Bache, the NTZ Administrator. The new format is a much improved one and our members have commented that it is much more enjoyable for them to receive and to read.

INTO funding for a Cultural Heritage project at Rhodes Nyanga Historical Exhibition was championed and largely secured by Sharon. Edone Ann Logan then implemented the project, working with three Nyanga schools, to a high standard and to a very successful level that we hope to replicate around Zimbabwe.

Sharon was also active in re-designing the old NTZ membership cards into a new contemporary card that will be launched for use in early 2016. She also introduced an easier payment method for paying membership subscriptions on-line.

In 2016 Sharon will be working on setting up a new computerised membership system in order to stream line the current system. In addition she will be working on establishing a fundraising page on the NTZ website. We certainly are hopeful that this new development will bring in much needed funds for the NTZ so that we may continue to improve our properties and operations. The NTZ is a voluntary organization, and has to raise its own finance as and when required. To date annual membership subscriptions, local fundraising activities, admission charges, rental, nursery plant sales and donations have been the main sources of local support. NTZ is supported by volunteers, both internationally and locally, who provide their time for free and various professional people who provide their services for free.



View from Murahwas Hill

Chairman's Report to the 42nd Annual General Meeting on 4th December 2015

Welcome and introductory remarks

Good Morning and welcome all of you to the 42nd Annual General Meeting on The National Trust of Zimbabwe (which I shall now refer to as "NTZ" in this paper). Thank you all for attending and supporting NTZ today and over the past year and hopefully continuing to support its efforts into the future.

This is my 2nd AGM as President of The NTZ and Chairman of the Council and what enormous progress our Council, the sub-committees and therefore NTZ as a whole has made over this last year under very difficult circumstances and within an extremely challenging environment.

I would also like to thank the NTZ Council, all of whom are honorary volunteers, that has worked tirelessly this last year. I would also like to thank the Council members for their support of me as Chairman. NTZ operations have been very professionally dealt with and the future of NTZ is now even more secure. There are still many challenges that lie ahead, as is normal with such an organisation in an ongoing development phase.

I will now report in detail on the various areas of activity of NTZ and the work that has been done and that planned for the immediate future.

Financial and Membership Matters

You will see from the NTZ audited financial statements that are being presented to you at this AGM that the cash position of NTZ has improved slightly but still remains marginal. A small deficit was incurred during the year ended 31 March 2015. This is a fairly common occurrence in such situations where income generated is then consumed for activities and fulfilling its responsibilities. The major financial issue in 2014 was the funding sought to undertake the major renovations at La Rochelle. Our independent consultants on the La Rochelle property, Acumen Africa Ltd, sourced funding at a very low interest rate and they managed the very successful renovation project. This project has resulted in a more secure future for La Rochelle, our flagship site.

The NTZ Council is continually looking at ways of improving revenue streams for NTZ to then allow NTZ's further development into the future.

At this point I would like to thank the Hyslop family for their significant efforts on NTZ's affairs in treasury management, secretarial matters and helping drive numerous NTZ projects forward throughout the year.

The NTZ Council continues to try to attract more members. An additional effort needs to be made to attract corporate members. We continue to look for additional membership benefits in an effort to make membership more attractive. We appeal to all NTZ's members to help us recruit all forms of new members.

We have issued newsletters on a regular basis in an effort to build closer relationships with our members and we have had positive responses. We will continue to issue newsletters as interesting information arises and involve our members in NTZ's affairs wherever possible.

Education

We believe that a primary benefit and output that NTZ provides from its properties and other activities is in the Education arena. NTZ is able to highlight the importance of Zimbabwe's heritage, arts and culture to its people and visitors. This aim is reflected in the NTZ payoff line – "Heritage is important, treasure it".

We have liaised with the Museums and Monuments Commission of Zimbabwe and have approached The National Archives, with a view to working with them on matters of common interest. Education of young Zimbabweans remains a top priority of NTZ. We are seeking an experienced Educationalist volunteer to help guide the NTZ Council on this important subject.

Publicity and Marketing

We have continued to actively raise the profile of NTZ. We have prepared a 5 year marketing strategy and with specific targeted activities in a 5 year plan. I would like to thank Sharon Waterworth personally for her tireless efforts and guidance in the numerous and wide ranging marketing and public relations matters.

INTO and other external relationships

Sharon and I were very privileged to travel to Cambridge in England in September 2015 to attend the "16th International Conference of National Trusts" ("ICNT"). Our conference costs were sponsored by INTO. Approximately 65 countries from around the world were represented at this conference. A lot of contacts were made with the organisations who attended. NTZ is still the only registered National Trust in Africa!



On our return, Sharon prepared a very detailed report of our visit which makes very interesting reading and should you require a copy we can email it to you. Thank you Sharon.

In Cambridge, we held a meeting of all the entities there that represented African territories. We agreed that it is important to create an INTO Africa Region to help co-ordinate heritage and cultural activities in territories across Africa and to work towards creating an entity that can represent African interests at INTO and globally, generally. I was tasked with drafting a paper on an Africa Region association, its vision and mission and aims and objectives as a start to such a mutually beneficial association across Africa. That paper was circulated amongst the African representatives who were at Cambridge and favourable responses have been received. I will be in Cape Town over Christmas and have arranged to meet the SA organisations who were in Cambridge to talk further about this African Regional association and to agree a final draft concept paper. We will then liaise with INTO as to the way in which to launch and progress such a grouping.

We will continue to build relations with a large number of other Zimbabwe associations, NGO's and organisations in the business, environmental, education, historical and financial sectors, all areas that are important to NTZ.

NTZ Properties – reports on status and activities

I will now report briefly on each of properties and the areas of activities that NTZ's Council has been attending to since the last AGM:

La Rochelle

As reported previously this property required urgent maintenance and refurbishment after many years of degradation arising from inadequate funding available to maintain the property to its previously very high standard. The property required a significant intervention to enable NTZ to undertake urgent maintenance and refurbishment, to plan the future of the property and thereby stabilise the property's position and future.

NTZ entered into a Memorandum of Understanding with Acumen Africa who sourced funding and very successfully directed and managed the renovation project. Those renovations were completed towards the end of 2014 and the hotel operations recommenced early in 2015 under the auspices of a new tenant, La Rochelle Centre (Private) Limited in which NTZ has a 10% stake. The public response to the renovated hotel and the surrounding estate gardens has been very encouraging so far and, as a result, its trading results, as a new operating entity, are satisfactory.

The tenant has undertaken the renovation of the Jacaranda Cottage (which was originally Lady Virginia's handcrafts workshop). This structure is being converted into a conference venue and bookings are already being received, before the building has even been fully completed!

The next development project entails the investment of approximately \$1million by external investors into La Rochelle Centre in developing an agricultural training facility aimed initially at training farmers in growing organic herbs. That project's financial planning and agreements with the new investors are nearing completion and construction of the new training facility should commence in early 2016.

Unfortunately, this agricultural training facility development will result in the need to re-locate the Primary School that has operated at La Rochelle for some years. Suitable alternative sites are being examined and a plan will be agreed for the funding and co-ordination of such a move.

In recent months, a generous donor made \$27 000 funding available to renovate the waterways in the Dell to ensure a better flow and supply of water and to renovate the Orchid hothouses. A very successful renovation project commenced and is not far off completion. Once this project is complete more details will be made public about this project.

La Rochelle's future is looking very bright!

Murahwa's Hill

The property's situation has not progressed, again through lack of funding. A lot of the property has been degraded by unauthorised access and theft of wood etc. The plans for a small interpretive centre aimed primarily as an education facility are still being developed. This plan, in conjunction with the National Museum and Monuments Commission should secure the property for its long term well being for benefit of the people of Zimbabwe. NMMC are willing to declare the property a national monument which should help towards protecting the property and then developing a small education centre there for the use of the schools of Mutare and its district.

Rhodes Nyanga Historical Exhibition

The RNHE ongoing museum expansion and a recent Cultural Heritage project (that started in 2014 and ended recently in 2015) has been very successful for NTZ Nyanga. The Cultural Heritage project was partly funded from INTO's Small Grants Project for which \$1 000 funding was received. This project covered heritage matters within the local community with selected schools visiting the museum, research and discussions on subjects covering My Self, My Identity, Place of Birth, Origins, Beliefs, Foods, My Family and Family Tree both maternal and paternal, My Ethnic Group - Tribe Totem Customs and My country - National Flag/Crest/National Anthem. Visits were also undertaken to Nyanga Pit structures and the Nyanga Art and Craft Village where the skills of sculpting and pottery were demonstrated. There is a hope that perhaps this project may rolled out to a wider area in Nyanga and then become a prototype to roll out nationally to schools across Zimbabwe.

I would like to thank Edone-Ann Logan and her very active passionate Committee for all the hard work they have undertaken in continuing to expand the RNHE facility and the successful heritage project they have undertaken.

World's View

Again, I am pleased to report that the World's View Committee, very actively driven by Gill Honeyman who selflessly provides bridging finance to the site as well, is assisted by Matrina who puts in long hours supervising and managing the site, along with Rob Barrett and others, have made some significant improvements over the last year consisting of further clearing and planting of the site, an art work display of indigenous flowers donated by the Logan Family and other interesting local information on display, further plantings of Proteas and, recently, the discovery of ancient ruins on the site. Further improvements are underway now (water tank tower, public toilets etc). I'd like to personally thank Gill's team for all their hard work on behalf of NTZ at this site.

The road up to World's View has been graded and the site is now very accessible. This site still has a large area that is undeveloped. Plans are to be looked at for the long term future further development of this important site.

Harare Heritage Houses

Unfortunately, not much progress has been made on this project. A new Committee has to be formed to drive this project forward (the labelling of protected heritage buildings in Harare and elsewhere with suitable plaques). At the Cambridge conference I made contact with a Dutch organisation who expressed an interest in possibly helping fund this project. We are pursuing this possibility now.

Sebakwe Poort

Unfortunately, due to its remoteness, no NTZ members currently in that area and the lack of funding, no progress has yet been made on this site in the last few years. A new Committee must be formed to drive this project forward and to assess the future and long term sustainability of this property. Contact has been made with local residents to try to take this matter forward.

Mabukawene

This property has also suffered from a lack of attention over the years, due to a minimal number of NTZ members in Bulawayo and the lack of funding. However, thanks to Rob Burrett, with a small team, he commenced the extensive cleanup of this site that had become a wild jungle of Lantana and other invasive plants. Rob also prepared a concept paper for the site outlining a vision to develop a small cultural and heritage education facility (along the lines of that envisaged for Murahwa's Hill). We are now converting that concept paper into a development and management plan for the site.

Funding will be needed for this development and operational funding until it is self sustaining. If necessary, as a second option, a back portion of the property could be sold to raise funds to invest back into the property. A membership drive is needed in Bulawayo and a new Committee (probably consisting mainly of this property's neighbours) is to be formed in early 2016 to drive this project forward. I'd like to thank Rob Burrett for his hard work on behalf of NTZ at this site.

Fort Gomo

Unfortunately, due to its remoteness, the difficulty of envisioning a sustainable solution for this property and the general lack of funding at this time, no progress has been made on this site. Contact has to be made with local residents to try to take this matter forward. A new Committee will need to be formed to drive this property forward after assessing the future use and long term sustainability of this property.



My apologies for the length and detail in this report but it is very important to bring NTZ members up to date on all aspects of NTZ at this time and the busy year we have had and to share our thinking and aspirations for the future.

I know that I and the NTZ Council look forward to hearing back from NTZ members and all other interested parties on any matters, concerns, if any, and constructive suggestions related to the activities and the future development of NTZ.

Thank you again to the NTZ Council, the Regional Property Committees and working parties and all of those other independent persons and organisations who have actively contributed to the activities of NTZ over the last year. We look forward positively to the future ongoing development of The National Trust of Zimbabwe and to fulfilling our payoff line "Heritage is precious: Treasure it"!

Thank you.

DJ Scott

Chairman of the Council of The National Trust of Zimbabwe

1 December 2015



La Rochelle Tower

RHODES NYANGA HISTORICAL EXHIBITION – ANNUAL REPORT – 2015

Progress has been made in different directions this past year. The decision to double our entry fee from \$1 per person to \$2 has made a tremendous difference to our revenue, and in addition we have had a slow but steady number of visitors and many busses full of school children. Our income has increased more than fourfold allowing us to increase the wage of the Curator and pay for some display cabinets, etc. and assist with funding the festive event at the conclusion of our Heritage Project. Sadly we have also had to make up a deficit from some losses from the shop. We hope December will bring a stream of visitors!

The Early 20th Century household in the Petheram Loft has been enriched by donations of many interesting articles, from 100-year old golf clubs to a genuine heirloom patch-work quilt for the antique bed, and a well-travelled Teddy bear with its life-story attached. The addition of further items to the Kitchen of 'old fashioned' utensils bring exclamations of delight from visitors as memories of Grandma's kitchen come flooding back. We have received some valuable, generous donations – two handsome period glass display cabinets, a complete set of NADA, Rhodesiana and Heritage journals, and two very old copies of classics. After one meeting a gentleman arrived with two strips of spotlights which he said he noticed we needed when he visited the Museum recently. We are so grateful for the generosity of the Zimbabwe community.

"The Outline History of the Women's Institute of this country, with emphasis on the Homecraft Movement" is taking longer than anticipated to prepare, as there is so much information to sift through and the work and achievements of so many wonderful women involved through the years, that it is extremely difficult to keep to 'an outline'. We consider that it is important that the founders of this movement are not forgotten. Letters and document from the daughter of one of the founders in Manicaland, Mrs. Peggy Fearn, have proved invaluable. In the Museum shop we now sell aprons and cloths made by a grand-daughter of one of the original Bvumba Embroidery Homecraft Clubs – with the same little figures of working women as were designed all those years ago.

A time-consuming but worth-while project undertaken this year has been the INTO Heritage Cultural Project. Six teachers and 132 pupils involved from three Nyanga schools (one senior and two primary schools) entered into the spirit of the project with keen interest and enthusiasm. Committee member, Annie Wilkes, a talented potter, travelling 50 kms each way to participate in the sessions. We are grateful to Mr Dhlandhlara of the SOLON Foundation for liaising with the schools and attending as many sessions as possible in his busy schedule. Planning discussions with the teachers were educational and enjoyable for us too, and we communicated thereafter on Whats app! The teachers prepared the pupils before each session. A tour of the Museum, followed by discussions on My Family, My Tribe, My Traditions and Culture, Family Tree, and Totems, etc were included in the first phase. A visit to the Parks Pit Structure was included in the second lesson. SOLON funded 100 copies of Robert Soper's "Terrace Builders of Nyanga" and the members of the Pre-History Society donated 100 copies of Rob Burrett's "Shadows of our Ancestors" so that every Nyanga school has access to these books, and the Nyanga Ancient Culture will hopefully be included in the school curriculum.

Phase two included an appreciation of Cultural Craft. The sculptors at the Nyanga Craft Village participated in the project by giving the children hands-on experience of stone sculpture. The craftsmen explained the importance of Cultural Heritage, and used their own stone and tools to teach the pupils – giving their time and expertise free. The Zuwa Weavers demonstrated their craft of carpet weaving to the children in the second sessions, showing the various stages of preparing, dying, spinning and weaving the wool. Again, these wonderful ladies gave freely of their time and expertise. We realised that these crafters enjoyed the opportunity of achieving something constructive for their community in these quiet, hard times.

The Project ended with a wonderful day at the Rhodes Hall, National Parks, when everyone involved in the Project was bussed (thanks to SOLON) to the Museum and after entertainment by the children and the presentation of certificates to all, we were served an excellent traditional lunch, cooked by the Parks catering team.

Sincere gratitude goes to all the funders – INTO, SOLON, NTZ, NPWLA and the RNHE ourselves! We are pleased that Chairman, David Scott, had the opportunity of thanking INTO at their Conference in the UK on our behalf for the funding which initiated the running of this Project.

The most recent display in the Loft is a Show Case of work done by the children involved in the Heritage Project, and is proving to be of interest to those involved in heritage education, teachers and the families of the children themselves.

The Committees of World's View and RNHE have combined in a project to uplift and revive the Zuwa Weavers' Co-operative. Applications are being presented to various organizations to secure funding for the renovation of the building and the purchase of materials.

NPWLA has constructed new toilets for the convenience of visitors to the Museum. We are grateful to the Rhodes Hotel for the use of their facilities through the years. It will be good to have our own near the Museum, thanks to National Parks.

One of our main aims for the coming year is to complete the cataloguing of the growing collection of historic and other valuable books in the Grainger Reading and Research Room.

Our thanks go to the Chairman, David Scott and NTZ Council members for their support and encouragement always.

To the members and co-opted members of our RNHE Committee and to our Curator – my gratitude, and appreciation for a successful and enjoyable year.

Edone Anne Logan
Chairperson
RNHE

Glimpses from the RNHE Heritage Education Project.



The Team. Mr. Dhlandlara, Curator M Nyanhanda and the teachers from the 3 schools involved, meet at the Museum.



Pupils of Nyangani High School are taught to hand-spin by a member of the Nyanga Zuva Weaving Co-Operative.



Ernst Spare of the Nyanga Craft Centre with one of his pupils, holding a mushroom she carved from stone.



Pupils from Nyangani High take notes prior to a visit to the historic Pit Structures in the Nyanga National Parks.

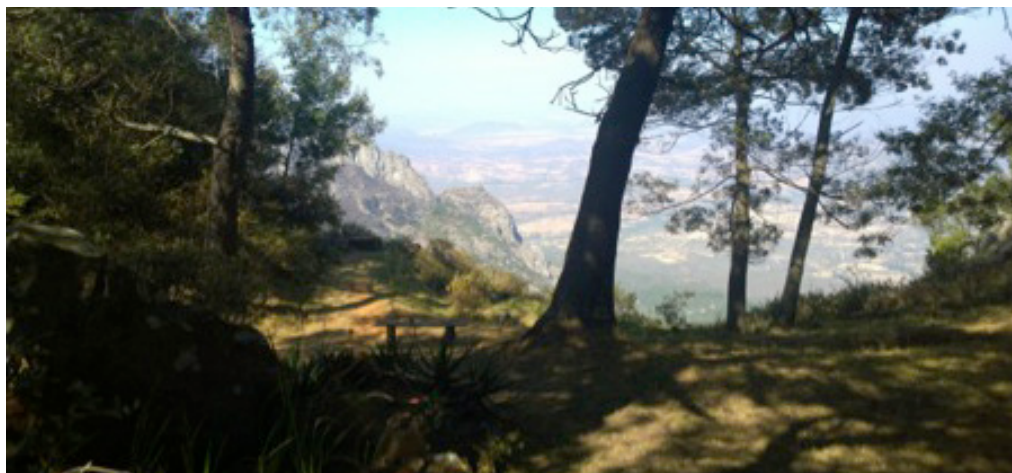


A display depicting the history of Sir Alfred Beit and the bridges and educational facilities funded by the Beit Trust.



A display of traditional basketry and pottery

World's View 2015 Report



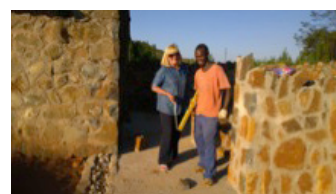
The World's View Committee, consisting of Rob Barrett (Chairman), Matirina Andras (Treasurer) and Gill Honeyman, have managed to maintain the property in good order and repair throughout the year despite financial constraints and the extreme weather conditions that prevail on the Mountain. It is with regret that Rob Barrett resigned as Chairman late in the year but happily he will still remain on the committee and with the appointment of Mrs June Weeks to our committee we face the challenges that 2016 will bring with renewed enthusiasm.

Thanks to the much improved 7km long stretch of road up to World's View the number of visitors to site has increased greatly which has brought in much needed revenue through entrance fees and donations. As a result, we have started various projects which will improve the site for our many visitors.

A new toilet block, to the rear of the existing office/gallery, is nearing completion and the installation of the new 5000lt water tank will be of great benefit, not only to service the new toilets but also to maintain the existing garden and future planned planting of indigenous species and our protea collection. A further extension to the gallery is in progress which will enable us to display interesting exhibits depicting the flora and fauna that are prevalent in the area.



Gallery extension and new toilet block – work in progress!



Gill Honeyman and Lashmore Kanyango, stonemason.



Carpenter, Steven Goora and assistants, starting work on the roof overlooked by Matirina Andras.

The current drought that is devastating the country has also taken its toll up on the mountain. The Connemara Lakes which supply water to site are extremely low with the top Lake, Mare, nearly empty.



View of an empty Lake Mare with Nyamatoro (World's View Mountain) in the background.

Rainfall has been well below the national average for the whole of 2015. This situation has been exasperated by the work of illegal potato growers who have damaged or diverted a number of natural springs that occur and would have kept the lakes topped up. The growers have ploughed huge tracts of, what used to be, beautiful natural grasslands and wild flower areas adjacent to the National Trust's property, making it essential for us to now completely fence the 72ha site to save it from a similar fate and also to keep out the ever increasing number of cattle that are being pushed up the mountain to graze. We thank the Chairman and Board of Little Connemara in their continued efforts to maintain the area as a Bird, Wild Life and Flora Conservation area – an ongoing exercise which is essential if we are to preserve this amazing area for future generation Zimbabweans and international tourists alike.



The path of a natural spring that once ran into Lake Mare – now destroyed by illegal cultivation of land that was taken from Little Connemara and designated for eco-tourism.

There were a number of fires that swept through the area late in the year and only through good management of firebreaks were we able to keep damage to a minimum at World's View and on the Little Connemara Estate itself.



Firebreak that managed to contain a large fire, with the help of some volunteer 'beaters'.

Landscaping of a small rock Kopje is well underway and some 'planting out' of our home-grown protea seedlings is currently taking place. The seeds were donated by world famous Kirstenbosch in the Cape (South Africa) and have been lovingly tended by Matirina and myself over the past year. They will greatly enhance our existing Proteacea collection as some of these varieties have never been grown in Zimbabwe before.



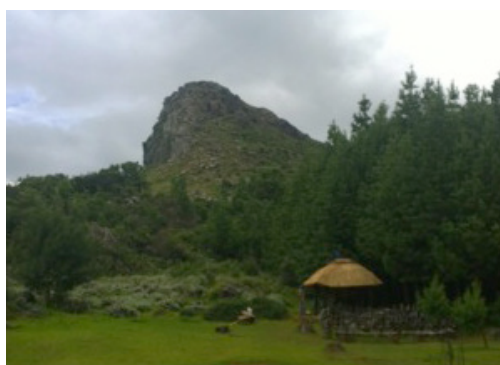


Beautiful display of last year's planting – Lucospermum: Scarlet Ribbon



Mairia with Protea Grandiceps. Planting aloes at entrance.

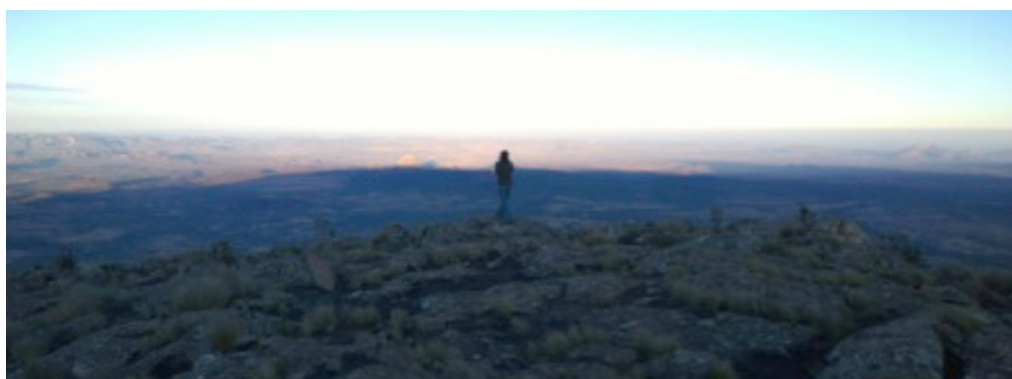
A new gazebo has been built for the Sculpture Garden at the base of Nyamatoro. The sculptors are extremely grateful as this provides shelter in inclement weather and also further space to display their work and also that of the Zuwa Weaver's Co-Operative hand made carpets.



Panganai, one of the World's View Sculptors with some of the work that they create,

2016 will be a busy one, not only finishing off the current projects but many more that we have on the drawing board to further enhance this beautiful property on the mountain.

Gill Honeyman
Chairman
Worlds View



Sunrise- facing west – one can almost envisage the curvature of the earth in this panoramic view from the edge of the escarpment.

La Rochelle 2015 Report

The NTZ is more than pleased to report that 2015 was an exceptional, exciting and outstanding year for the property that saw many important elements of the LRC project vision being achieved.

Project vision:

To develop the La Rochelle property and estate into a creative 'nexus' of educational, cultural and environmental excellence in Southern Africa while adapting the estate to the economic and educational realities of the 21st century, for the benefit of both Manicaland and indeed Zimbabwe as a whole and playing a small part in the country's renaissance.

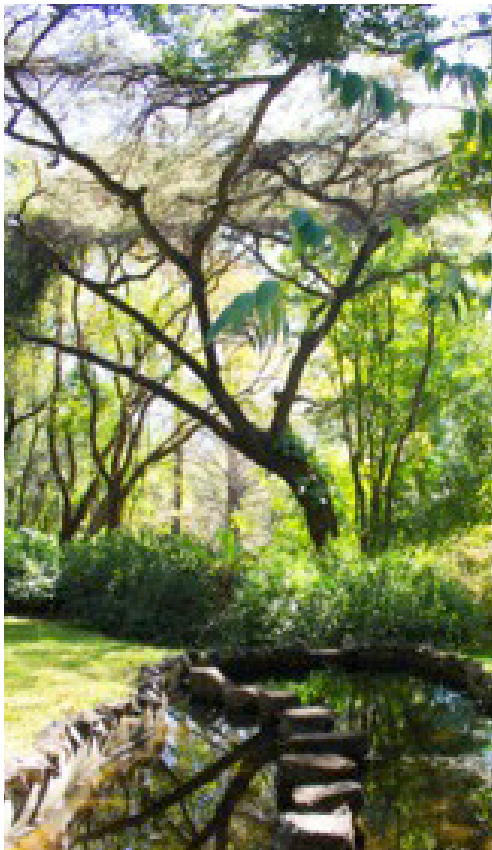
In addition to LRC staff hard work whose dedication and commitment is invaluable so much was achieved through a large team of professional people living in Zimbabwe and in the UK, who so generously gave up their time and expertise voluntarily. Together, everyone worked to uphold the vision that Sir Stephen and Lady Virginia Courtauld had for the estate.

The team undertook a major refurbishment of the buildings, infrastructure and gardens was completed and new furniture and equipment was purchased whilst other key pieces were lovingly restored with the expert assistance of Sheena Hewitt.

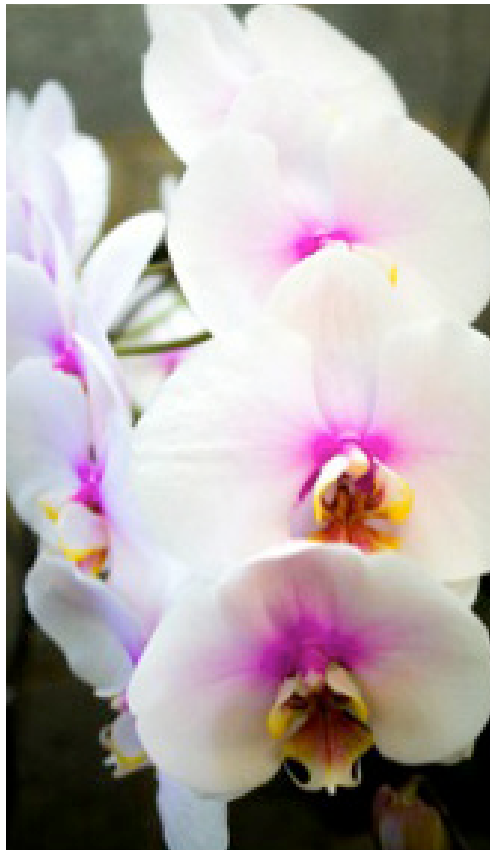
The La Rochelle Centre Operating Company (LRC) was formalised with the appointment of a Director representing the interest of the NTZ in this Company. The La Rochelle Centre website was launched (www.larochellecentre.com) closely linked to the NTZ website. Mr Kevin Martin was appointed the General Manager of the Estate and Mr Jannie Martin was assigned the responsibility of looking after the orchids and the Dell area.

The final result was the re-opening of the hotel re-branded as the La Rochelle country House.

With assistance from Mrs Henrietta Courtauld, a landscaper based in London, UK, London who spent hours researching the original gardens from family documents, the estate team worked tirelessly to renovate the gardens. The refurbishment of parts of the garden were made possible by a very generous private donation that was instrumental in renovating the water furrow that feeds the arboretum, many of the ponds and artificial streams as well as a complete overhaul of the famous orchid house which is surrounded by streams and waterfalls.



Tropical Dell

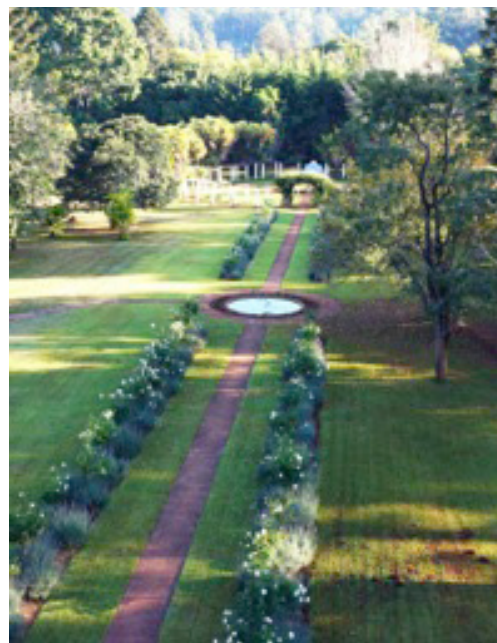


Phalaenopsis Orchid

The team also completed renovations to the more formal gardens and ponds to be able to open La Rochelle as a select wedding venue for the occasional garden wedding set in a stunning grounds.



Wedding Venue



Formal Gardens

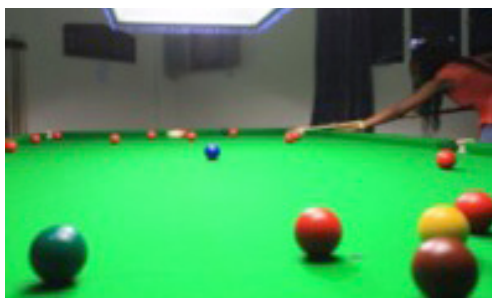
The building of a new Conference Centre was achieved towards the end of the year with the generous assistance of Stone Beattie Architectural Studio in Harare. The Old Craft Hall was restored to its former glory. The project achieved Lady Virginia's request in her Will to use La Rochelle as "a venue for conferences either of a public, national, international or educational character".



New Conference Centre

Another project completed was the opening of a new Snooker Room, that saw the reconditioning of a 100 year old British championship table.

The new children's "petting farm" was partially completed which – along with fishing, boating, hiking, birdwatching, cycling, horse-riding, snooker, swimming and spa treatments facilities that will improve the visitor experience.



During the major refurbishment of the house and the estate the “aesthetics from the Courtauld era” were retained through careful research wherever possible. A development of this magnitude is extremely positive, especially against the backdrop of a difficult economic situation in Zimbabwe.

In addition to the re-opening of the hotel a La Rochelle Historical Guide Book. was compiled by Mr Bruce Mennell, who lives in the UK who put in much time and effort researching and seeking information from a variety of sources including Darrel Plowes, the NTZ and English Heritage. The document was kindly edited by Mrs Sharon Waterworth who lives in Zimbabwe. The guide book is an excellent resource for those visitors to LAR and in addition to this it is a valuable historical document containing many rare photographs of Sir Stephen and Lady Virginia Courtauld.

Mr Mennell luckily, also was able to trace historic negatives held by a London photographic studio. Copies of the photographs, taken of La Rochelle and the Courtaulds in 1957 by the renowned British photographer Mr J. Alan Cash, F.R.P.S. and now displayed in the house. The find was a very fortuitous record of the lounge fittings and of views of the house and surrounds at the time that the Courtaulds lived at La Rochelle. Mr Mennell also had copies made of various paintings that were formerly hanging in the house, creating another historical record.

During the time that the Courtaulds lived at La Rochelle it was a Mecca for important local and overseas people from all walks of life, and included artists and film stars, as well as influential politicians, in addition to family members. Most of these distinguished visitors were asked to engrave their signatures with a diamond-tipped stylus on the two large end windows which are of great historical importance.



Historical Signatures on the Lounge Window

An exercise to decipher and record all the signatures on the windows commenced in November 2013 and the compilation of the signatures was completed in 2015. The painstaking work was undertaken by Mrs Nina Bauer of the NTZ, Mrs Heather White and Mr Darrel Plowes. Also the next step was started: to research into each signatory and compile an account of whom they were.

The signatures cover an interesting period in the history of Zimbabwe and they may provide an insight into what facilitation role the Courtaulds played in its transformation. In 2016 the NTZ will publish this important information into a document.

We are now looking forward to implementing more projects during the course of 2016.

FINANCIAL STATEMENTS

31 MARCH 2015

REPORT OF THE INDEPENDENT AUDITOR TO THE MEMBERS OF THE NATIONAL TRUST OF ZIMBABWE

I have audited the financial statements set out on pages 3 to 8 for the year ended 31 March 2015.

Respective responsibilities of the Trustees and Auditors

The financial statements are the responsibility of the members of the executive committee. My responsibility is to express an opinion on these financial statements based on my audit.

Scope

I have conducted my audit in accordance with approved International Standards on Auditing. Those standards require that I plan and perform the audit to obtain reasonable assurance about whether the financial statements are free of material misstatement. An audit includes:

- examining, on a test basis, evidence supporting the amounts and disclosures in the financial statements
- assessing the accounting principles used and the significant estimates made by the executive committee and
- evaluating the overall financial statement presentation.

In common with other similar Trusts, due to the nature of certain income received, it is not possible to verify that all income has been brought to account, although I have no reason to suppose that there are any omissions.

Audit opinion

Subject to the foregoing statement, in my opinion, the financial statements in all material respects give a true and fair view of the financial position of the Trust as at 31 March 2015 and of its Income and Expenditure and Statement of Cash Flow for the year then ended, are in conformity with policies suitable for an organisation of this nature and in compliance with the National Trust Act(Chapter 25:12).

Mr. A.P. Joffe C.A.(Z) C.A.(S.A.)
18 Northampton Crescent,
Eastlea,
Harare

30 November 2015



World's View



BALANCE SHEET AS AT 31 MARCH 2015

Notes	2015	2014
ACCUMULATED FUNDS		
Balance 31 March 2014	5,745	5,352
Surplus as per the annexed account	391	393
	6,136	5,745
Capital reserve	279,741	279,741
	285,877	285,486
LA ROCHELLE ESTATE FUND		
Balance 31 March 2014	(8,746)	(8,040)
Deficit per the annexed account	(439)	(706)
	(9,185)	(8,746)
LA ROCHELLE CENTRE (PRIVATE) LIMITED	136,881	-
BEIT TRUST	6,384	6,384
GOVERNMENT OF AUSTRALIA - Direct Aid Programme	6,655	-
TOTAL FUNDS	\$426,612	\$283,124
FIXED ASSETS		
Donated and leasehold property and capital costs thereon	416,712	273,181
Tractor, furniture and equipment	3,010	4,412
	419,722	277,593
INVESTMENTS		
At valuation	123	334
CURRENT ASSETS		
Cash resources	6,350	6,699
CABS	2,002	710
	8,352	7,409
CURRENT LIABILITIES		
Prepaid subscriptions	585	1,365
International National Trust Organisation - Special Grant Programme (2015/16)	1,000	-
Creditor- G. Honeyman fencing World's View	-	847
	1,585	2,212
Net current assets	6,767	5,197
	\$426,612	\$283,124

..... MEMBERS OF THE
 President/Chairman EXECUTIVE COMMITTEE
 Harare

 Treasurer 30 November 2015

INCOME AND EXPENDITURE ACCOUNT

YEAR ENDED 31 MARCH 2015

INCOME 2015

	Total	Head quarters	La Rochelle	Mabuku wene	World's View	Rhodes Nyanga
Gate receipts	7,064	-	324	-	4,695	2,045
La Rochelle Centre (Private) Limited	15,500	-	15,500	-	-	-
Rental of property - Learning Centre	4,250	-	4,250	-	-	-
Sale of Plants	988	-	988	-	-	-
Subscriptions	2,735	2,025	425	-	-	285
Sundry revenue	9,997	936	8,163	-	550	348
Shop (net)	364	-	-	-	-	364
	\$40,898	2,961	29,650	-	5,245	3,042

EXPENDITURE 2015

Administration	4,082	892	1,957	-	518	715
Depreciation	752	188	564	-	-	-
Electricity and rates	5,480	-	5,480	-	-	-
Repairs and maintenance	5,833	-	1,591	-	3,526	716
Salaries, wages and expenses	23,602	-	19,300	-	2,612	1,690
Vehicle expenses	1,197	-	1,197	-	-	-
	\$40,946	1,080	30,089	-	6,656	3,121

SURPLUS/(DEFICIT) FOR THE YEAR

(48)	1,881	(439)	-	(1,411)	(79)
-------	-------	--------	---	----------	-------

Allocated as follows 2015

- Accumulated funds	391
- La Rochelle Estate Fund	(439)
	\$ (48)

INCOME 2014

	Total	Head quarters	La Rochelle	Mabuku wene	World's View	Rhodes Nyanga
Gate receipts	5,150	-	190	-	4,273	687
Rental of property	16,518	-	15,918	-	600	-
Sale of Plants	2,460	-	2,460	-	-	-
Subscriptions	1,340	975	350	-	15	-
Sundry revenue	6,518	2,281	3,815	-	-	422
Shop (net)	245	-	-	-	-	245
	\$32,231	3,256	22,733	-	4,888	1,354

EXPENDITURE 2014

Administration	3,262	308	592	-	1,625	737
Depreciation	1,105	90	1,015	-	-	-
Electricity and rates	3,305	-	3,305	-	-	-
Repairs and maintenance	3,954	-	1,399	-	2,435	120
Salaries, wages and expenses	18,549	-	14,759	-	2,250	1,540
Vehicle expenses	2,369	-	2,369	-	-	-
Purchases -shop	-	-	-	-	-	-
	\$32,544	398	23,439	-	6,310	2,397

SURPLUS/(DEFICIT) FOR THE YEAR

(313)	2,858	(706)	-	(1,422)	(1,043)
--------	-------	--------	---	----------	----------



INCOME AND EXPENDITURE ACCOUNT YEAR ENDED 31 MARCH 2015

Allocated as follows 2014

- Accumulated funds
- La Rochelle Estate Fund
- Mabukuwene Revenue Fund

393
(706)
-
<u>\$ (313)</u>

CASH FLOW STATEMENT 31 MARCH 2015

SOURCES OF CASH

Surpluses:

Head Quarters

Worlds View

Rhodes Nyanga Historic Exhibition

Deficit: La Rochelle

Rhodes Nyanga Historic Exhibition

World's View

NET TOTAL DEFICIT

Add Non cash item Depreciation

TOTAL OPERATING SURPLUS

Decrease in Cash balances from previous year

Capital Bank

Cash

Prepaid subs

Creditor - G. Honeyman. Fencing World's View

Government of Australia Direct Aid Programme

La Rochelle Centre (Private) Limited

International National Trust Organisation - Special Grant Programme (2015/16)

Disposal of Motor Vehicle

TOTAL SOURCES OF CASH

Applied as follows:

Improvements to leasehold property - Rhodes Nyanga Historic Exhibition

Improvements to La Rochelle

Creditor - G. Honeyman. Fencing World's View

Increase in cash balances from previous year

CABS

Cash

Decrease in value of investment

TOTAL CASH APPLIED

2015	2014
1,881	2,858
-	-
-	-
1,881	2,858
(439)	(706)
(79)	(1,422)
(1,411)	(1,043)
(48)	(313)
752	1,105
704	792
-	315
349	
1,053	1,107
(780)	1,365
-	847
6,655	-
136,881	-
1,000	-
655	-
\$145,464	\$3,319
6,655	-
136,881	-
847	-
1,292	710
-	2,519
(211)	90
1,081	3,319
\$145,464	\$3,319

NOTES TO THE FINANCIAL STATEMENTS

31 MARCH 2015

1. GENERAL

These financial statements are expressed in United States dollars.

2. ACCOUNTING POLICIES

2.1. Accounting convention

The financial statements are prepared under the historic cost convention, with the exception that all fixed assets acquired prior to March 2009 have been revalued to reflect their estimated value in United States dollars at the date of Dollarisation in Zimbabwe. Improvements at La Rochelle and Rhodes Nyanga Historic Exhibition have been stated at cost. No other procedures have been adopted to reflect the impact on the financial statements of specific price changes or changes in the general level of prices.

2.2. Taxation

The Commissioner of Taxes in a letter dated 16 April 1993(Ref:Com1051/F.86) exempted the Trust from income tax and withholding tax.

2.3. Depreciation of fixed assets

No depreciation is provided on capital costs incurred on donated and leasehold property. Insofar as this relates to buildings this is not in accordance with International Reporting Standards. The amounts at which the Fixed Assets are stated are equal to their fair values. Depreciation is provided on other fixed assets on the reducing balance basis at an annual rate of 20% estimated to write off their cost over their expected useful lives.

2.4. Revaluation

Fixed assets were revalued by the Committee from time to time and the surplus arising therefrom is reflected as a capital reserve.

3. LA ROCHELLE CENTRE (PRIVATE) LIMITED

La Rochelle Centre (Private) Limited is a Company incorporated in Zimbabwe in which the National Trust of Zimbabwe has a right to a 10% share of the equity. The Company has a ten year lease on the property La Rochelle, with an option to renew the lease for a further ten years. Improvements to the property will be on the BOOT principle over the period of the lease.

4. DONATED AND LEASEHOLD PROPERTY AND CAPITAL COSTS THEREON

Donated property

Stand 2508 Mutare Township (Murahwa's Hill) donated by the

Municipality of Mutare

Lot 4 of Banks, Mutare District donated by Mr J.P.Valentine

World's View, Stand 17 Little Connemara Township, Nyanga

donated by Gouvernement; Lots 2,7,8 of Little Connemara,Nyanga

donated by Little Connemara (Private) Limited

La Rochelle Estate in District of Mutare donated

by Lady Virginia Courtauld

Improvements - La Rochelle Centre (Private) Limited

Mabukuwene in the District of Bulawayo donated by

the Thomas Meikles Trust and Investment Company (Private) Limited

Leasehold property

Rhodes Nyanga Barn

Improvements to date

Sebakwe Poort Park

	2015	2014
	52,500	52,500
	1,750	1,750
	1,750	1,750
	175,000	175,000
	136,881	-
	35,000	35,000
	2	2
	13,799	7,149
	30	30
	\$416,712	\$273,181



5. MOTOR VEHICLES, TRACTORS, FURNITURE AND EQUIPMENT

	Valuation	Aggregate depreciation	Book Value	2014
Motor Vehicles	-	-	-	655
Tractor and equipment	2,875	2,121	754	942
Furniture and equipment	2,840	2,095	745	931
Fencing	4,656	3,432	1,224	1,525
Office equipment	1,094	807	287	359
	\$11,465	8,455	3,010	4,412

The amount of depreciation changed in the financial statements is as follows.

Motor vehicle	-
Tractor	188
Furniture and equipment	258
Fencing	306
	\$752

6. INVESTMENTS

	No. of shares		Market Value	2014
Meikles Limited	1,767	revalued	123	334
Halogen Limited(delisted ex ZSE)	466	revalued	nil	
			\$123	\$334



NATIONAL TRUST OF ZIMBABWE

30 Hawkshead Drive, Borrowdale, Harare, Zimbabwe
Tel: 04 860202 E-mail: info@ntz.org

ANNUAL MEMBERSHIP: 01 April to 31 March

Our Mission:

To be the custodians of those properties and sites of cultural heritage and natural beauty which we hold in trust and to maintain and manage them for the benefit and enjoyment of the people of Zimbabwe and our friends now, and as a legacy for future generations.

Individual member	USD 15.00	<ul style="list-style-type: none"> • Free entrance to NTZ properties in Zimbabwe; • Free entrance to properties of overseas National Trusts with whom we have reciprocity;
Corporate (Card entitlement for up to 6 persons)	USD 200.00	<ul style="list-style-type: none"> • Free entry to National Galleries; • Quarterly E-Newsletter; • Discounted tickets for selected productions at Reps Theatres; • 10% off a Scotty Photographic Session; • 10% off selected rugs/throws Hayhill Weavers; • 10% off accommodation at La Rochelle Country Hotel visit http://larochellecentre.com • Reciprocal membership with Bird Life Zimbabwe and Tree Society

----- (If you wish to keep the section above please cut here)

Name: _____

Address: _____

E- mail: _____ Phone: _____

Individual Member(s): \$ _____

Corporate Member: \$ _____

Donation: \$ _____

Card: (please tick)

☐

I will collect it

☐

Please post it to me

BANK PAYMENTS: CABS National Trust of Zimbabwe Account No. 1002855012
and e-mail/post the completed membership form to Mr J Hyslop

NOTE : Bank Deposits apply only to members in Harare and Bulawayo NOT to members in Mutare and Nyanga

ECOCASH payment accepted. CASH payments and contact details during office hours to:

Harare: Mr J Hyslop 30 Hawkshead Drive, Borrowdale, Telephone: 04 860202 E-mail: hyslop@mango.zw

Mutare: Mrs N.Bauer: Telephone: 020-60396 E- mail: anybauer4@gmail.com

Nyanga: Mrs Edone-Ann Logan: Telephone: 029-3195 E-mail: leecrofts@bsatt.com

THANK YOU FOR SUPPORTING THE NATIONAL TRUST OF ZIMBABWE

Members of International National Trusts Organisation and the Global Heritage Network
Reciprocity with National Trusts worldwide and Stichtings Kasteelen en Geldersch Landschap in the Netherlands
List of NTZ Trustees available upon request



National Trust of Zimbabwe

ESTABLISHED 1960