

**ANNUAL REPORT  
NUMBER FOUR:  
APRIL 2017 - MARCH 2018**



**National Trust  
of Zimbabwe**

ESTABLISHED 1960



*Member of International National Trusts Organisation  
and the Global Heritage Network*

*Reciprocity with National Trusts worldwide and  
Stichtings Kasteelen en Geldersch Landschap in the Netherlands*





## National Trust National Trust of Zimbabwe

### Contact Details:

### SECRETARIAT

30 Hawkshead Drive Borrowdale,

Harare, Zimbabwe

Email: [info@ntoz.org](mailto:info@ntoz.org)

Website: [www.ntoz.org](http://www.ntoz.org), [www.ntzimbabwe.org](http://www.ntzimbabwe.org)

[www.facebook.com/National-Trust-of-Zimbabwe](https://www.facebook.com/National-Trust-of-Zimbabwe)

### REGIONAL COMMITTEES

#### Rhodes Nyanga Historical Exhibition:

Mrs Edone-Ann Logan E-mail: [leecrofts@bsatt.com](mailto:leecrofts@bsatt.com)

#### La Rochelle:

Ben Tyser

E-mail: [tyserb@acumenafrika.com](mailto:tyserb@acumenafrika.com)

#### Mutare:

Ms Nina Bauer

E-mail: [anybauer4@gmail.com](mailto:anybauer4@gmail.com)

#### Worlds View:

Ms Gill Honeyman E-mail: [honey1103@hotmail.co.uk](mailto:honey1103@hotmail.co.uk)

#### Design and layout:

Lizane Purse: [lizpurse@gmail.com](mailto:lizpurse@gmail.com)



La Rochelle



Worlds View



# National Trust

## Table of Contents

About the National Trust of Zimbabwe	4
The NTZ Governing Body	4
Mission Statement	4
Overall Aims and Objectives of the Trust	4
National Trust of Zimbabwe Properties:	5
La Rochelle Estate	
Rhodes Nyanga Historical Exhibition	
World's View	
Murahwa's Hill	
Fort Gomo Kadzamu	
Mabukuwene	
Sebakwe Poort	
The Structure of the National Trust of Zimbabwe	6
Office Bearers	6
Employees	6
Funding	7
INTO Membership	7
Africa Regional Forum	8
Membership Benefits	8
Chairman's Report to the 44th Annual General Meeting	9
La Rochelle Annual Report	12
World's View Annual Report	14
Rhodes Nyanga Historical Exhibition Annual Report	17
Mabukwene Annual Report	19
Fort Gomo Annual Report	20
Murahwa's Hill Annual Report	21
Sebakwe Poort Annual Report	21
Achievements and other key activities	22
Financial Statements 31 March 2018	
The Objects of the Trust 2017/2018	26
Report of the Auditor	27
Balance Sheet	28
Income and Expenditure Accounts	29



## About the National Trust of Zimbabwe

The National Trust was originally founded in the United Kingdom in 1895 by three Victorian philanthropists - Miss Octavia Hill, Sir Robert Hunter and Canon Hardwicke Rawnsley. Concerned about the impact of uncontrolled development and industrialisation, they set up the National Trust to act as a guardian for the nation in the acquisition and protection of threatened coastline, countryside and buildings. More than a century later the National Trust remains very much alive and a similar sister organization, The National Trust of Zimbabwe was established in 1960 by the National Trust Act with the same aim of protecting and managing properties for future generations to enjoy.

Some of our properties are held in perpetuity so that their future protection is secure. The others are open to visitors and we are constantly looking at ways in which we can improve our services.

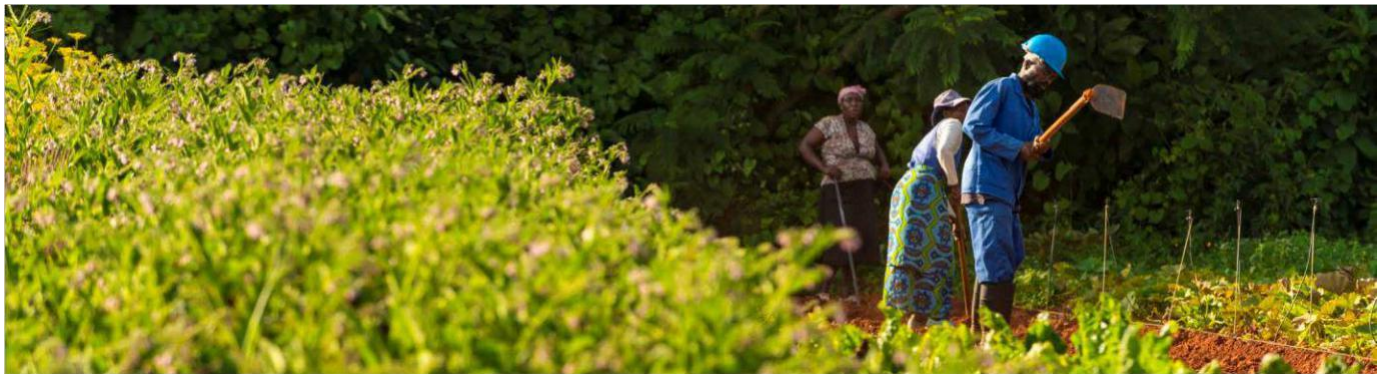
## The NTZ Governing Body

The National Trust act is assigned to the Minister of Environment, Water and Climate Change. It is administered and controlled by a voluntary Council consisting of a President and not less than 10 or more than 20 members of whom not more than 18 are elected at an annual general meeting of members and three are appointed by The Ministry.

## Mission Statement

Our mission statement is as follows:

'To be the custodians of those properties and sites of cultural heritage and natural beauty which we hold in trust and to maintain and manage them for the benefit and enjoyment of the people of Zimbabwe and our friends now, and as a legacy for future generations.'



## Overall Aims and Objectives of the Trust

The aims and objectives of the NTZ are as follows:

- (a) to accept and hold property in trust for any public purposes and to act in trust for or as Trustee of any property devoted to public purposes in accordance with the conditions of such trust;
- (b) to promote for the benefit of the people of Zimbabwe the permanent preservation and protection of:
  - i) lands and buildings of national, archaeological, historical or aesthetic interest; natural resources, animal or bird life and trees or flora.
  - ii) objects or collections of objects of any description having national, archaeological, historical or aesthetic interest including furniture, works of art, stamps and literature;
- (c) to provide the public with access to and enjoyment of the lands, buildings, resources and objects mentioned in (b) above.
- (d) to maintain or manage or assist in maintaining or managing lands and buildings for the purpose of public recreation, entertainment, resort or instruction.

# National Trust of Zimbabwe Properties

The Trust manages and controls the following seven properties:

**Manicaland:** Fort Gomo is a small stone fort and is located at the top of a hill typical of the many fortifications in the eastern half of Zimbabwe with an attractive area of Miombo woodland and broken granite terrain. There are 360-degree views from the summit;

**La Rochelle Country House and Spa:** The estate consists of 108 ha with a French style tower and house, with Welsh slate roof tiles, built by Sir Stephen and Lady Virginia Courtauld in 1951 as a retirement home. A leading Professor of Architecture described it as follows: “La Rochelle is a rare example in Africa of a major early Modern Movement (in architectural terms) private house, and almost unique in Zimbabwe. Today it is a boutique hotel;

**Murahwa’s Hill:** A large granite hill named after a local Headman Madekurahwa under Chief Mutasa who lived at the foot of the hill from around the second half of the 19th century before relocating further south in the Save Valley. Traditionally it was protected in the past as a place of spirits;

**Rhodes Nyanga Historical Museum:** The building is known as Rhodes Stables, built in 1897 for Cecil John Rhodes. It is a museum that houses a display of manuscripts, photographs and other exhibits of interest relating to Nyanga and persons and events connected with its history and development;

**Worlds View:** Set high on a hill that affords stunning views of the surrounding landscape. From an altitude of 2000m the escarpment drops 600m to the plain below. There is a Toposcope with numerous plaques of black granite around the perimeter with radiating lines indicating the direction and direct distance to thirty cities, towns and places of interest;

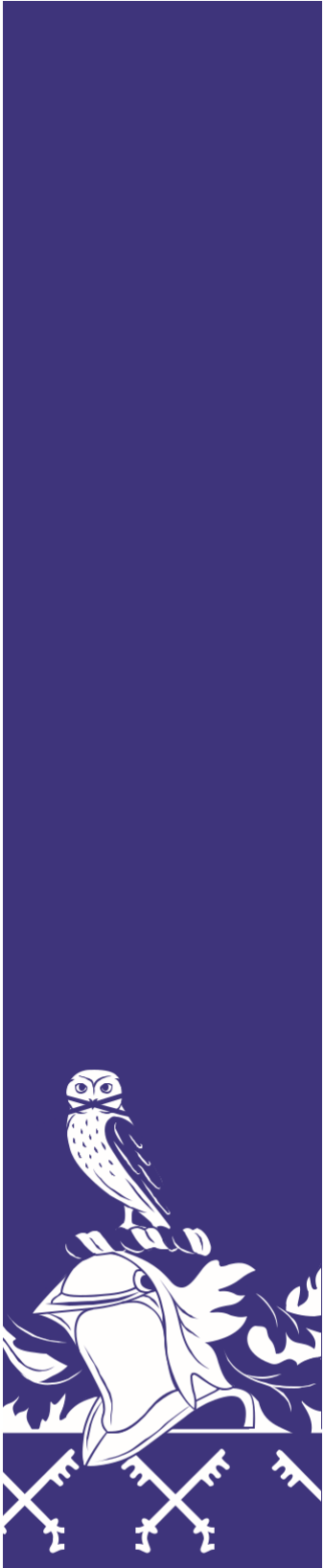
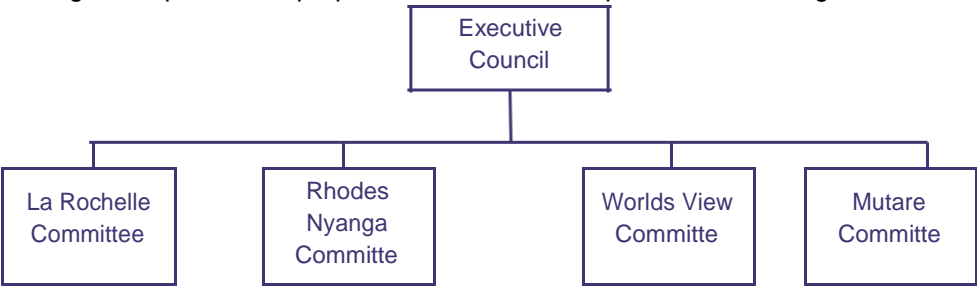
**Matabeleland:** Mabukuwene consists of 12 hectares of indigenous trees and plants. It has a view point built upon a rocky outcrop at 1, 422 metres above sea level. There are some 80 different species of indigenous trees including some particularly fine specimens of Ficus and Euphorbia with many aloes and other succulents. The property has a long social heritage that extends back from at latest 250,000 years to the early colonial era;

**Midlands:** Sebakwe Poort is essentially an area of natural and unspoiled woodland comprising a large number of species of indigenous trees; including many fine specimens of Acacia species. The Sebakwe River flows through the property and the poort (gorge), is an impressive sight.

## The Structure of the National Trust of Zimbabwe (NTZ)

The NTZ operates using a two-level structure as follows:

The Executive Council acts as the overall governing body. Four Regional Committees manage their portfolio of properties, i.e. membership, sales, marketing, finance, media etc.





An external auditor is appointed with the approval of the Minister of Environment, Water and Climate Change and audited accounts are submitted to the Ministry on an annual basis.

### Office Bearers

President: Mr. D. Scott  
Vice President: Mrs. S. Waterworth  
Treasurer: Mr J. Hyslop  
Secretary: Mr. C. Hyslop

### Executive Council Members:

Mrs Fira Bache, Mrs Helen Hyslop, Ms Gill Honeyman, Mrs Lin Goncalves, Mrs Edone-Ann Logan, Mr Clifton Mubaira, Mr Elliot Mugamu, Mr Munya Murombe and Ms Clare Peech,

### Legal Practitioners Honey and Blanckenberg – Harare

### Employees

During the period April 2017 to March 2018 the NTZ employed the following people at four of its properties:

#### La Rochelle

Hotel and Estate  
Grounds: 32 permanent  
staff

Organic Herb  
Farm:

Month	Permanents	Casuals	Tota
Apr-17	22	111	133
May-17	22	110	132
Jun-17	31	124	155
Jul-17	31	186	217
Aug-17	31	201	232
Sep-17	39	280	319
Oct-17	39	255	294
Nov-17	40	225	265
Dec-17	41	286	327
Jan-18	45	346	391
Feb-18	43	302	345
Mar-18	46	457	503

Note:

The table shows the increase in employment numbers over the course of just one year is very significant and provides testimony to just how successful and well managed the organic project is.

**Murahwa's Hill** – 1 permanent staff member

**Rhodes Nyanga Historical  
Exhibition** – 1 permanent staff member

**Worlds View** – 2 permanent staff



## Funding

Sources of funding for the NTZ include rentals, annual subscriptions, donations and bequests, admission charges to properties, hire charges for the use of halls and grounds, and the proceeds of sales of nursery plants and cut flowers, sculptures and paintings.

## Services offered by the NTZ, at various sites, include the following:

- Walks in indigenous flora and fauna and formal gardens and arboretums
- Access to a rare exotic orchid collection
- Bird watching
- Viewing rare species of butterflies, beetles, moths and dragonflies
- Woodland and mountain walks
- Mountain bike and horse-riding trails at La Rochelle
- Boutique accommodation at La Rochelle
- Massage and beauty treatments at the Fantasy Spa at La Rochelle
- Protea and Wild Flower Conservancy at Worlds View
- Art gallery at Worlds View
- Curated exhibitions depicting Manyika African culture, early Nyanga settlement, traditional leadership, Cecil Rhodes and Nyanga, fallen heroes, tribal Chiefs, the Tangwena People and changing exhibits
- Event hosting i.e. small conferences, weddings and company retreats
- Camping and caravanning
- Viewing historical sites including: ruined stone-walled settlements, Iron Age settlements, livestock enclosures, lowland forts associated with the Shona Dynasties, rock paintings; old village remains, graves and various other stone and brick-built structures
- Access to research library
- Educational school tours



## INTO Membership

The NTZ is part of the International National Trusts Organisation (INTO) which is a non-governmental group founded in 2007. INTO was established to promote the conservation and enhancement of the natural and cultural heritage of all nations for the benefit of the people of the world. INTO has close links with organizations such as: UNESCO, UNEP, ICOMOS, IUCN and Europa Nostra. Currently, INTO represents about 55 million individual members and countless millions of visitors to sites and properties across more than 25 countries.



INTO are actively involved in various initiatives including conserving and enhancing existing built resources, most notably by the viable re-use of historic and older buildings, greening of existing building stock, and reinvestment in older and historic communities and managing land in a sustainable way.

## Africa Regional Forum



In 2015 INTO established the Africa Regional Forum and NTZ is a full time member. The new INTO Africa group brings together a vibrant network of African Heritage Organisations that will share ideas and resources, develop a continent-wide voice, promote and influence on African cultural heritage matters.

## National Trust of Zimbabwe

### Membership Benefits

Being a member of the NTZ has benefits both inside the country well as around the world:

#### Zimbabwe

The Trust has a growing membership. Members enjoy the following benefits:

- Free entrance to NTZ properties in Zimbabwe
- Quarterly E-newsletter
- Discounted tickets for selected productions at Reps Theatres
- Free entry to National Gallery Zimbabwe;
- 10% off a Scottyphotography session;
- 10% selected rugs/throws Hayhill Weavers
- 10% off accommodation at La Rochelle Country Hotel
- Reciprocal membership with Bird Life Zimbabwe, Tree Society & History Society

#### United Kingdom

The NTZ has reciprocity with the National Trust of England, Wales and Northern Ireland and the National Trust of Scotland. In terms of arrangements with these Trusts, members are entitled to free admission to all of the many outstanding National Trust properties throughout England, Wales, Northern Ireland and Scotland upon production of a valid National Trust of Zimbabwe membership card. This represents a considerable benefit to members of the Trust who visit the United Kingdom.

#### Worldwide

Through reciprocal arrangements with the National Trusts in Guernsey, Jersey, Barbados, Ireland, Malaysia, Bahamas, Bermuda and New Zealand and with the Australian Council of National Trust's, and the Stichting het Vrienden der Geldersche Kasteelen and Stichting het Geldersch Landscape in the Netherlands Trust members enjoy free admission to the numerous properties of the National Trusts in those countries.



## **CHAIRMAN'S REPORT TO THE 44th ANNUAL GENERAL MEETING**

I am very happy to report that, again, we have continued to make progress on NTZ's activities and with 3 of the properties and community-based projects, despite the difficult environment. Those properties are now settled in their respective positions and their activities. However, there are still 4 undeveloped properties that now require our attention, in this coming year. With careful/thoughtful strategies and business planning and fund raising and development, we aim to achieve a long-term sustainable position for those 4 sites.

I would like to thank the NTZ Council, all of whom are honorary volunteers, that has worked tirelessly again this year. NTZ operations continue to be professionally handled in a business-like manner. There are still many matters to attend to, as is normal with such an organisation in an ongoing development phase. We have the passion and enthusiasm to be able to continue to develop NTZ into the future!! I will now report briefly on the various areas of NTZ's activities over the last year:

### **Financial and Membership Matters**

My overall comments on the audited financial statements and the financial position of NTZ are as follows: The financial results reflect our continued moving forward with NTZ's affairs in the last year, despite the difficult environment. This has only been made possible, thanks to all the efforts of the Council, the Committee's and all of its stakeholders and its supporters!!

### **Operations and activities outcomes:**

- The La Rochelle property position now settled and the tenant developing their operations in line with their vision/business plans and they are planning to continue to develop La Rochelle facilities and services,
- RNHE Committee continued to develop the exhibition and are being supported by the community and visitors to the Nyanga area. They have continued with community focused projects/exhibitions and with all the demands of running such an institution still managed to earn a small profit, well done!!
- World's View is in such great shape and very popular with visitors, thanks to Gill and her team's hard work, and it continues to draw many visitors
- We received financial support from The Thomas Meikle Trust and assistance from Dave Mason, for which we are very grateful. The funding enabled us to continue with the Mabukuwene property clearing and refurbishment project. We are close to finishing this project and can now start to consider and plan the future uses of the site.
- We received very considerable sponsorship from INTO towards myself, Sharon and Lin attending the ICNT Conference in Bali in late 2017 where we continued to expand our international network and learning of trusts working around the world. For this INTO relationship we are extremely grateful for their significant ongoing support and encouragement.
- No other areas drained our resources.
- We can/must now focus more on all our other undeveloped properties and other community-based projects effectively into the future.
- An area requiring ongoing efforts is our work towards increasing membership numbers, particularly in attracting corporate members.
- Our resources (funding and skills) continued to be limited but are strengthening slowly but surely.

Overall a satisfactory year's results that allows us to start more and greater things in the coming year.

### **Education**

We believe that an extremely important activity that NTZ can provide from its properties/activities is in the Heritage, Arts and Culture and Environmental Education arena. We will be planning and focusing more of our efforts in this important area this coming year.



### **Publicity and Marketing**

Sharon Waterworth has very actively continued to raise the profile of NTZ through media and website/Facebook articles and presentations. I would like to thank Sharon Waterworth personally for her tireless efforts and guidance in the numerous and wide-ranging marketing and public relations matters.

### **Environmental Conservation**

This is an important area of activity that NTZ is developing. Sharon is also our Environmental Expert to which end she has also contributed significantly to NTZ activities. Recently NTZ has been looking at/ discussing an area near one of our current sites that has environmental threats and concerns about the long-term well-being of the area. We are developing a draft proposal, and with the local community and the relevant authorities, will outline and plan the possible future handling of this area, from a conservation and ecotourism perspective. We will report more on this matter once it becomes more certain, discussions with stakeholders have been held and a possible new conservation project formalised.

### **INTO and other external relationships**

We are leading a Pan-African initiative (with help from INTO) that has helped to create an INTO Africa Group ("INTO AG") aimed at helping co-ordinate heritage and cultural activities across Africa and to work towards representing African interests at INTO and globally. I have Chaired INTO AG for the last 2 years and we are in the process of planning an important inaugural conference for INTO AG to be held in March 2020 at La Rochelle. We will continue to build relations with a large number of other Zimbabwe associations, NGO's and organisations in the business, environmental, education, historical and financial sectors, which are all sectors that are important to NTZ.

### **NTZ Properties – Reports on Status and Activities**

The annual report contains detailed reports on each of the properties and activities that NTZ is involved in. However, I will just make a few high-level comments on each of properties and the areas of activities that NTZ's Council has been attending to since the last AGM:

#### **La Rochelle**

In this last year we re-negotiated a long-term lease (50 years) with the tenant (La Rochelle Centre (Pvt) Ltd), which took effect from July 2017. That lease has the effect of significantly improving the property annual income return to NTZ thereby ensuring that NTZ is able to repay the refurbishment loan (over a 20-year period at a low interest rate), generate additional income for NTZ. In addition, the tenant has committed to undertake further permanent development of the property (new training/events facilities and additional accommodation and refurbishment of other buildings on site).

These developments will be based upon the "Build Own Operate and Transfer ("BOOT") principle whereby the tenant will fund all improvements at no cost to NTZ and hand over a more fully developed property at the end of the lease. These improvements will help ensure the sustainable long-term future of the property for NTZ.

#### **Rhodes Nyanga Historical Exhibition**

The RNHE ongoing museum expansion has continued. I would like to thank Edone-Ann Logan and her very active passionate Committee for all their hard work they have undertaken in continuing to expand the RNHE facility. A significant new addition to the exhibitions is the "time line" covering the history of the area from pre-history to current day times.

#### **World's View**

The World's View Committee, continues to be very actively driven by Gill Honeyman and her team. The site is a very popular area for visitors to Nyanga. The team has made further significant improvements over the last year consisting of very substantial ablutions and an art gallery, extension of the workers' accommodation and further clearing and planting of the site. An event is to be held at the art gallery to unveil a plaque naming the gallery "The Gill Honeyman Gallery".



### **Murahwa's Hill**

The property's situation has not progressed, again. A lot of the property has been degraded by unauthorised access and theft of wood etc. National Museums and Monuments of Zimbabwe are in the process of declaring the property a "national monument" which should help towards better protecting the property. NTZ can then progress the development of a small education centre there for the use of the schools of Mutare and its district.

### **Sebakwe Poort**

This site is visited periodically by farmers and other local residents and used as a camping and picnic site. It is a beautiful area that has some important environmental issues to consider. We are currently establishing the long-term lease and land designation position. Once we clarify the land control issue, we will discuss the possible future of the site with the authorities responsible.

### **Mabukawene**

This property has suffered from a long period of neglect, due to an absence of NTZ members in Bulawayo and the lack of funding. However, thanks to significant funding from The Thomas Meikle Trust, help from Dave Mason and with leadership from Busani Bafana (to all of whom we are extremely grateful), with a small team, they commenced the extensive clean-up of this site, starting with firebreaks around the whole circumference and then internally clearing the Lantana and other invasive plants. That clean-up project is now nearing completion.

### **Fort Gomo**

Unfortunately, due to its remoteness, the difficulty of envisioning a sustainable solution for this property and the general lack of funding, no further progress has been made on this site, yet. Contact has been made with local residents to take this matter forward. A development and management plan needs to be formulated to drive this property forward.

### **Heritage Sites**

Unfortunately, very little progress has been made on this project. Discussions have been held recently to consider formulating a plan to identify and label National Heritage Sites that should be labelled as "protected important heritage sites". A new Committee is to be formed to drive this project forward in this coming year.

Once again to the NTZ Council, the Regional Property Committees and working parties and all of those other independent persons and organisations who have actively contributed to the activities of NTZ over the last year. We look forward positively to the future ongoing development of The National Trust of Zimbabwe and to fulfilling our payoff line "Heritage is precious: Treasure it"!

Thank you.

Mr. Scott

**CHAIRMAN OF THE COUNCIL OF THE NATIONAL TRUST OF ZIMBABWE**



## National Trust of Zimbabwe Properties

The Trust manages and controls the following seven properties with the help of its Executive Council and Regional Committees who are all voluntary workers.

### LA ROCHELLE ANNUAL REPORT

The estate consists of 108 ha with a French style tower and house, with Welsh slate roof tiles, built by Sir Stephen and Lady Virginia Courtauld in 1951 as a retirement home. A leading Professor of Architecture described it as follows: "La Rochelle is a rare example in Africa of a major early Modern Movement (in architectural terms) private house, and almost unique in Zimbabwe. Today it is a boutique hotel.

In late 2017 a unique Public Private Partnership (PPP) was established and the Trust signed a 50-year Notarial lease for La Rochelle for the establishment of the following:

- Agricultural Training centre
- Accommodation for training centre and
- Expansion of country house

The PPP is in synergy with the vision of the NTZ and Organic Africa and their business partners have a very good reputation for looking after the environment and being socially responsible in their business operations. Needless to say, the project presents an exciting opportunity for ensuring the economic viability of La Rochelle, training and supporting small scale farmers, caring for the environment and raising the profile of the NTZ regionally.

Based on the positive feedback in response to the new management of the property and the upgrading that has taken place, there is enormous potential for growth. This past year has been a busy and eventful one for La Rochelle and we are very happy with how far we have come in working towards our end goals and vision for the "La Rochelle Project".

The property consists of three main sections: The hotel and Beauty Spa, the grounds and the new organic herb farm. Here are some of the highlights of the year:

#### **Country House Boutique Hotel and Beauty Spa**

A research programme was undertaken in December 2017 and January 2018 to determine attitudes to and understanding of the property in order to obtain information that is useful in planning longer-term future strategy for the venue.

Occupancy has greatly improved with an average occupancy rate of 40%.

The hotel successfully hosted the following events:

- 10 conferences with top corporates such as Old Mutual, TelOne, ZIMPLATS, Pearl Properties, IDBZ and more.
- Bird courses, vintage car rally, art retreat, jazz evening, food and wine pairings, educational workshops and four weddings.
- A series of musical events were performed by the Peterhouse instrumental group and the Iona Jones Singers of the Phoenix Choir.





A thatched rondavel was upgraded to house the beauty Spa adjacent to the swimming pool area. The treatments on offer have been reorganized and the spa now offers a wider range using all natural and organic products.

Work on identifying and recording the signatures etched on the famous windows continues, the result will be of great historical significance and will result in a publication.

The well-known Tjaart Walraven, famous South African chef and judge on the popular show SA Bake Off, came to train the catering staff and new menus.

High-tea's in the garden or lunch in the Chinese Pagoda were introduced in the 20ha arboretum, a tranquil venue set amongst exotic trees with a breath-taking view towards the forested mountains on the Mozambique border. The coffee shop area was renovated and extended outside on the patio area.

### Estate Grounds

Further improvements were completed to the orchid house.

The very rare Lady Virginia Orchid flowered again. It flowered for the first time in 2016 after 40 years of not flowering. The Courtauld's discovered the rare species and kept it in their greenhouse at Eltham Palace, London. When their greenhouse was destroyed in the Second World War, only a tiny piece of the orchid remained which miraculously they were able to identify and save and it is now on show in the Orchid House.

Visitors are enjoying exploring the extensive grounds that are continually being improved upon:

- New trails have been established for hiking, biking and horse riding.
- Volley ball and croquet facilities were created.
- A petting farm was opened.
- The large swimming pool was restored.
- The dam was also restored; children can paddle in the dam, go fishing and boating.



### Organic Herb Farm

The herb farm training centre has seen the establishment of 10 hectares of 'field test' of organic herbs and the trials are well on their way and fast expanding. Herbs that have been planted include Lemon Verbena, Peppermint, Chilli, Chamomile, Lemon balm, Fennel, Stinging Nettle, Safflower, Calendula, Caraway, Tulsi, Basil, Thyme, Dandelion, two varieties of Ginger, and three varieties of Turmeric Anise and many have seen their first harvest. Visitors to the hotel can now wader down to the farm and pick fresh herbs to make a cup of herbal tea or pick a few to garnish a sun downer drink with.

The trials were conducted by Mr Dominik Collenberg who holds a Master's Degree in Organic Farming and Master's Degree in Economics of Development which means that he has the expertise to implement the project. He is the Director of Organic Africa a company who focus on organic production and are the only company certified in organic fair-trade products in Zimbabwe. They are also the only company in southern Africa whereby its small-scale farmers have their land certified and so are able to produce high quality herbs. Organic Africa works extensively with all their producers to help them attain Ethical Biotrade, Organic and Fair-Trade certification. An export market was secured for the crops by a leading herbal tea producer based in Europe.

Since September 2017, the farm has trained some 3,889 farmers (2377 female and 1512 male). 47 of them comprised 4 farm managers and 42 contract farmers.

Future plans include the building of a regional agricultural college to train small scale farmers, mainly women, on how to grow crops without using chemicals or fertilisers and how to make compost according to strict organic global regulations.



## **WORLD'S VIEW ANNUAL REPORT**

The mountain experienced a very wet start to 2017, with rainfall for the season (to March 2017) of over 1700mm and all three Connemara Lakes are again full and spilling furiously. The torrential rains flooded the car park - it dried out gradually and reopened after some filling and levelling. The 2m wide x 30m long contour ridge that we dug at the base of Nyamutoro (World's View Mountain) thankfully, prevented a more serious situation. In preparation for the 2018 rains extensive ground-work was undertaken to prevent any further flooding. Pits and trenches were dug and backfilled to channel the rainwater away from the car park and down to the western slopes of the site. The rains brought on an abundance of wild flowers and the site is looking stunning.

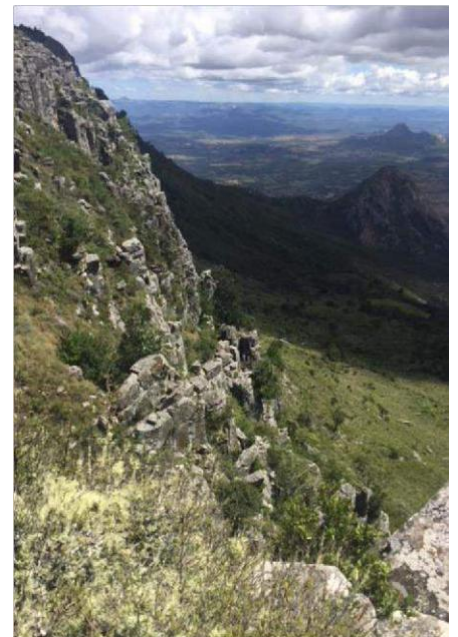
But this is in stark contrast to the land outside the fence, where there is evidence of the damage and degradation caused by the cattle that are driven up the mountain to graze. It is our intention to, once again, petition the powers that be, to stop these cattle coming up the mountain and left unattended night and day. Up to now our complaints and those of the Board of Little Connemara have not been heard. The loss of the flora, fauna and birdlife that once inhabited the area is also of great concern: this due 100% to not only the overgrazing by cattle but also the 'outsiders' who come with their packs of hunting dogs, under the pretence of 'looking for their cattle', meanwhile they are carrying axes, clubs and catapults.

The Little Connemara Estate was declared a bird and wildlife sanctuary some years ago but all the land on the outside of the circular drive that surrounds the Connemara Lakes was acquired by Government in 2002 for eco-tourism. The conservation of the area has been totally neglected since then. Snares are constantly being found and removed by walkers and the Connemara residents. The firebreaks are not maintained and some of the land has been given over to potato growers who have exasperated the situation by ploughing and interfering with the natural springs that occur on the areas designated to them.

A large landslide beneath the World's View toposcope occurred on a path made by the cattle coming up the eastern slopes. Ground cover being reduced through localised overgrazing and trampling has greatly increased the risk of further landslides due to the soil losing the ability to 'hold'. There are some further sections that look like they may 'go' as well, as some large 'cracks' in the soil are apparent adjacent to the original fall.

The upper slopes leading to the summit of Nyamutoro and some parts of the lower fenced area of the site are constantly being cleared of pine and other invasive species. It is an on-going exercise to keep on top of this problem but Matirina with chainsaw and the caretakers with machetes have put paid to hundreds of these invaders and the larger trees have been felled and cross cut as firewood for use in the caretakers' woodstove. Renovations and extensions to the staff housing reached completion mid-year. It was a busy time with builders, carpenters and plumbers all working on site at the same time. The old 'long drop' was replaced with a flush toilet and new shower area created so consequently new piping had to be laid and a new soak away dug at the bottom of the caretakers' garden. A large French drain was laid at the top of the vegetable garden to take the grey water and help to keep their vegetables watered during the dry season. Instead of using the local stone we decided to do the extensions in brick/plaster to stay in keeping with the original structure. This has worked well and resulted in a neat and handsome little building. An additional window has been fitted to the back bedroom.

The new veranda is sheltered by a shoulder high wall to give protection from the wind and a second wood burning stove installed. All internal rooms have been fitted with





ceiling boards to stop condensation forming and the old inside kitchen has been turned into a sitting room. Luke and Arthur are delighted with their new home and have asked me to convey they're thanks to the National Trust for upgrading their accommodation. They both worked over and above their normal hours to assist in this project and we are grateful to have such dedicated staff in our service.



A new 35m length of picket fencing replaced the old and rotting one along the road boundary which has enhanced that aspect tremendously. A pole fence has been constructed on the inner boundary, hedging planted and a 'Staff Only' sign put on the gate.

For the second consecutive year, yet another of our stone gate posts was 'taken out' by a bus, followed by an angry bull who ripped the wooden entrance gate into several pieces. Fortunately, he was spotted and escorted off the property with his many lady friends before too much damage was done to the gardens! The 4th picnic table and benches have been completed and an upgrade to their surrounds has been achieved by new planting of azaleas and a bit of further landscaping on the terrace below. It is rewarding to see the fruits of our labours coming to bear at last, the gardens are full of interesting beds that have now filled out and provide an array of different flowers throughout the seasons, although not all the plants are of an indigenous nature, they provide colour and interest for our many visitors.

There was a drop off in visitors from September due to the 'cash crisis' and fear of harassment by police at road blocks. However, since mid-November this has greatly improved and we have introduced an Ecocash system that works well. June Weeks continues to bring us aloe cuttings which are being planted along the escarpment. An old cattle track coming up the eastern slopes (now fenced), has caused considerable erosion, so to combat this a large semi-circular stairway using local stone, has been constructed. This will make a great spot for large groups wanting to picnic and enjoy the scenery.

A very successful 'Carols by Sunset' was arranged on Christmas Eve by Lindsay Lees May, manageress at Little Connemara and Pam and Dave Lee and family, residents of the estate. Word sheets and Christmas pies were handed out, the rain held off and 'the hills were alive with the sound of music'.

In 2018 the professional services of Mr Jakob Raath to undertake an ecological study of the World's View area was commissioned. The overall aim is to have a database of ecological resources relevant to the area for posterity as well as being an aid in planning and making future recommendations for our site and environs.

Phase I, the pilot study, was completed in January. Jakob returned to site to complete Phase II mid-March. The aims of Phase II were to expand on the activities begun earlier as well as collect plants not seen flowering at the time of Phase I. New areas of the NTZ environs were sampled and more data about the overall environmental health of the area were gathered.

In addition, an extra 2 volunteer days were spent removing the vegetation from the ruins above the carpark to expose the sections of walling for future archaeological work. The removal of the vegetation was done in a methodical manner, taking care to cause minimal impact. We had no idea of the extent of these 'on-site' ruins until Jacob, with the help of Matirina and Luke, discovered that the ruins are much more extensive than first thought. We look forward to the return of Rob Burrett to take his archaeological study further.



More of Jacob's findings on the adjacent land to the south of the World's View site, reveal that in this unique area a potential ecological disaster is in the making. Steps are being taken to have this area placed under protection. As recommended by Rob Burrett, a sign at the start of the path leading to the summit has been placed to make climbers aware of the conditions that may await them. Mist can descend in minutes so it is advisable to keep to the footpath and to keep a watchful eye for baboon activity. Our little 'Plant Sales' section is doing well and visitors are delighted to be able to buy plants that they can see in flower in our gardens. We continue to support Valhalla Nursery in Juliasdale for the azaleas and hydrangeas and Mrs Dalrae Bailey, also of Juliasdale, has become a recent supplier of well-established protea plants.





Landscaping and planting the kopje to the south of the toposcope is complete and the first flowering of the Kirstenbosch proteas graced the kopje.

The following are some quote from our visitor's book which are worthy of mention .....

***"I'm going to die a happy man – even more proud to be Zimbabwean after visiting this place with my family. Thanks to the hardworking guys for maintaining this awesome place"*** ***Lional Takawira, Guildford, Surrey, UK.***

***"This is one of the few places in Zimbabwe still intact and looking lovely as always".***  
***Chervonna Gororo, Harare.***

***"A real gem, the best kept place in Zimbabwe".*** ***Kate Hurst, Stellenbosch, RSA***

***"A return after more than 20 years and I really loved the re-visitation. More beautiful and extraordinary than I remember. Thank you for keeping it well".*** ***Gynthia Baloyi, Ohio, USA.***

***"We haven't been to World's View in years and have been amazed at the beauty and tidiness. The toilets must be the most beautiful and functional in Zimbabwe".*** ***Snick Nkomo, Harare.***

***'One can see God's hand at work here'. ....*** ***Someone has kindly added in bold black capitals - 'with a little help from NTZI'***

Gill Honeyman World's View  
March 2018



## **RHODES NYANGA HISTORICAL EXHIBITION** **ANNUAL REPORT**

May I begin with a complimentary paragraph taken from a report written by Archaeologist/Teacher/Historian/Editor, Mr Rob Burrett, after a visit to RNHE and World's View in April, 2017.

"Since my last visit in April 2014 the RNHE has expanded by leaps and bounds, both in quantity of material displayed and the quality of its content. It is becoming one of the more important historical depositories in the country. The team that has put it together must be commended for an excellent job. I was delighted to see the large number of visitors who were there the day I visited it (Easter Saturday 15th April 2017). It was diverse in ethnicity and age. The interest being shown by the African population is especially gratifying. We hope that this will encourage them to become more actively involved as this heritage belongs to us all and their engagement will ensure the long-term viability of the project".

We thank Rob for this encouragement and advice, and financial assistance when most needed.

Over the past year we have had two visits from Mr Scott and NTZ Councillors, all of whom have been helpful and supportive throughout. In June Dr. Jonathan Zilberg, an authority on the history of Shona Sculpture, visited Nyanga and spoke to members of the Committee on the well-known Nyanga Sculptors of the last century. We were able to visit the homes of these men and meet family members. This has led to an offer by the son of one sculptor to let us use some of his father's work to display in the museum.

Another important visitor was Dr Ines Grainger who came to view the Don Grainger Reading and Research Room, and tour the Exhibition. Dr Grainger was happy with the freshly painted Room and mended ceiling, kindly renovated by National Parks.

In June Rob Burrett again spent time in the area, partly assisted by SOLON Foundation, undertaking field work at some isolated Nyanga schools, and speaking to teachers and senior students on the importance of their cultural heritage. He was able to explore heritage sites and give advice on protecting the sites.

Recently the focus of our Committee has changed slightly from purely improving and enlarging the Historical Exhibition, to encouraging Cultural Heritage projects in local schools. We were delighted in November when a presentation of our 2015 heritage project was made by NTZ at the International National Trust Conference in Bali, and was voted the best project! This encouraged us to participate in a Cross-borders Heritage Project with Uganda and Sierra Leone, which involved school children using their cell phones to take short video clips of any heritage or traditional activity. This was well supported by the schools, and thanks to a crowd-funding appeal through INTO, we were able to give monetary prizes to individuals and Heritage Clubs which produced the best videos. The Prize-giving will be held in April 2018. Mr Dhlandhlara is to be thanked for his active support of all our school projects.

The most important and challenging display undertaken by the Committee in 2017 was the 'Zimbabwe Time Line'. All Members





participated, each researching a 30-year period, and we now have on display 5 periods from BC until 1980. The last period – 1980 to the present day, has been researched and written up for us by the teachers and pupils of the History Department of St. Monica's High School. We are looking forward to completing the Time Line with this excellent conclusion. Great interest is being shown already by the many school children who visit the museum.

Various displays have been moved and up-dated. A section on saddlery and horses is being created with donations from members of the community. More valuable books have been donated to the Reading Room. We are grateful to all members of public who give interesting and historic articles to display.

The RNHE signage has been renewed, thanks to NTZ. The garden is looking lovely with new lavender replacing the old plants, plumbago flowering well outside the wagon shed, protea planted in the beds and generally, a good make-over by Dal Bailey.

Before closing this report, I wish to express my appreciation to Mrs Merle Moore, Vice-Chairman, who is holding the reins this year, organising special events with the support of the Committee Members and dealing with problems, correspondence and the general running of the museum. Marshall Nyanhanda is keeping the exhibits, buildings and wash-rooms clean and tidy and also dealing with the visitors, including large groups of school children, extremely well. Mr Geoff Hawksley holds the purse strings and somehow manages to pay our monthly expenses in this difficult financial climate.

To each and every Member and Ex-Officio Member, I wish to express sincere gratitude for your support and friendship – and hard work.

Edone A Logan.  
Chairman RNHE





## **MABUKWENE ANNUAL REPORT**

This property has suffered from a long period of neglect, due to an absence of NTZ members in Bulawayo and the lack of funding. However, thanks to significant funding from The Thomas Meikle Trust, help from Dave Mason and with leadership from Busani Bafana (to all of whom we are extremely grateful), with a small team, they commenced the extensive clean-up of this site, starting with firebreaks around the whole circumference and then internally clearing the Lantana and other invasive plants. That clean-up project is now nearing completion.

We continue to liaise with The Thomas Meikle Trust on the future possibilities at this property. A draft concept paper was prepared some time ago outlining a vision to develop a small cultural and heritage education facility. We are starting to convert that concept paper into a long-term development and management plan for the site.

Funding will be needed for this development and operational funding until it is self-sustaining. A membership drive is needed in Bulawayo and a new Committee is to be formed in the near future to drive this project forward.





## **FORT GOMO ANNUAL REPORT**

Unfortunately, due to its remoteness, the difficulty of envisioning a sustainable solution for this property and the general lack of funding, no further progress has been made on this site, yet. Contact has been made with local residents to take this matter forward. A development and management plan needs to be formulated to drive this property forward.





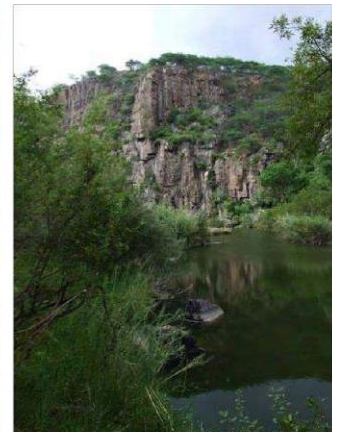
## MURAHWA'S HILL ANNUAL REPORT



The property's situation has not progressed, again. A lot of the property has been degraded by unauthorised access and theft of wood etc. National Museums and Monuments of Zimbabwe are in the process of declaring the property a "national monument" which should help towards better protecting the property. NTZ can then progress the development of a small education centre there for the use of the schools of Mutare and its district.

## SEBAKWE POORT ANNUAL REPORT

This site is visited periodically by farmers and other local residents and used as a camping and picnic site. It is a beautiful area that has some important environmental issues to consider. We are currently establishing the long term lease and land designation position. Once we clarify the land control issue we will discuss the possible future of the site with the authorities responsible.





## ACHIEVEMENTS AND OTHER KEY ACTIVITIES

*By Sharon Waterworth, Vice Chair*

I am proud and delighted to report our main achievements and other key activities that we have accomplished during the past year. I am excited by the opportunities in front of us in the coming year.

### **International Conference National Trusts**

Three Trust Committee members attended the ICNT Conference and met around 130 other heritage professionals from almost 30 countries. The conference was hosted by the Indonesian Heritage Trust and the Regency of Gianyar, held in Bali in September 2017. The theme was: Our Cultural Heritage, the Key to Environmental Sustainability and the aim was to bring global delegates together to explore the connection between their cultural traditions and concerns for sustainable development. The main issues for examination were: the impact of economic development on cultural landscapes; the relationship between cultural rights and social development, issues of heritage preservation and poverty; forecasting and management; and the impacts of climate change.



It was an excellent way to work together to exchange ideas and contacts to preserve our heritage in all forms – historical, cultural and geographical

- tangible and intangible. It was wonderful to hear what other National Trusts are doing globally and of course to network with passionate and dedicated like-minded people. The conference was an unforgettable, exciting and very motivational event. The NTZ would like to extend its gratitude and thank INTO for so generously partially sponsoring the three NTZ delegates that attended. The NTZ are a proud member of the INTO.

### **The Trust wins the International National Trust Organisation (INTO) Small Grants Programme (SGP) Prize.**



In 2014 the Trust decided to undertake an innovative, experimental pilot project for school children to “Re-discover their living traditions and identify their cultural roots”. The project focused on heritage education management and based on community participation in terms of their time and materials and provided capacity building for school teachers.

The SGP is designed to provide small scale but catalytic support for the international family of INTO member organizations, working on heritage management and related community-led cultural programs. The primary purpose of the SGP is to build capacity and strengthen governance, membership recruitment and sustainability of INTO members.

As a past recipient of the SPG the Trust was invited to submit our project into the SGP competition. During the ICNT Bali conference Dame Reynolds announced that the ‘Cultural Heritage Education project’ implemented by the Museum had won the SGP annual award for the most popular and meaningful project! The Trust was very proud and excited to have showcased the work that we do in Zimbabwe on a global platform.

*Left: Opening flag ceremony. Below Left: Receiving the prize for winning the SGP: from left to right: Lin Goncalves (Executive Council Member), Dame Reynolds, David Scott (Chair) and Sharon Waterworth (Vice Chair). Below centred: Tree planting ceremony - Africa Group in Bali.*





## **Inaugural Annual Heritage Award**

In 2018 the Trust will be launching its first annual Heritage Award in celebration of World Heritage Day. The Award will be in the form of a floating trophy and will be presented to the person who has done remarkable work in the field of preservation of culture and heritage and made a significant contribution in this regard to the country.

## **Diversity and Inclusion**

The Trust is proud to say that it is listening and responding to the changing needs of its visitors. Realising that diversity and intangible cultural heritage is being lost and the world is becoming poorer in culture and wiping away the traces of history and local distinctiveness the Trust decided to start working to keep it alive, protect and promote it.

Over the past few years, the displays at the Museum have expanded and become more inclusive to the rich cultural diversity in Zimbabwe. There is a now permanent display of early Manyika culture along with pictures and stories associated with renowned Tribal Chiefs and various people who have played a significant part in the country's history. Traditional stone sculptures, pottery and woven mats are also a feature of the Museum. The Museum Committee, along with Marshall Nyanhanda, the Curator, continually work hard to organize various exhibitions that have included traditional customs of indigenous people portrayed by displays of relevant foods, tools, implements, and musical instruments. And, after making a very determined effort, in early 2018 the completion of the 'Time Line Project' was achieved. This depicts salient historical events related to Zimbabwe during the period from BC to 1980.

The Trust is actively encouraging schools to visit heritage sites in their area and experience hands-on traditional crafts, and most importantly, research their own family histories, collect stories from their grandparents, and find their own identities within their ethnic groups.

## **World Heritage Day**

UNESCO established 18 April as the International Day for Monuments and Sites in 1983. World Heritage is the shared wealth of humankind. Protecting and preserving this valuable asset demands the collective efforts of the international community. This special day offers an opportunity to raise the public's awareness about the diversity of cultural heritage and the efforts that are required to protect and conserve it, as well as draw attention to its vulnerability. The Trust is planning, for the first time, a series of events to celebrate World Heritage Day in April 2018.

## **Two New Archaeological Sites Discovered**

### ***Mabukuwene***

Mr Rob Burrett, a local archaeologist and historian alerted the Trust that archaeological material had been exposed by rain water and foot induced erosion along a foot path. The National Museums and Monuments of Zimbabwe (NMMZ) undertook an initial assessment survey. The artefacts were in the form of potsherd and beads. The NMMZ then returned a second time and conducted a rescue excavation so as to preserve the material culture and also to ascertain whether there was more evidence of pre historical occupation using cultural debris to see which period it was occupied. Test pit excavations produced a small assemblage of glass beads of various colours, pot sherds as well as bones and evidence of a midden which resemble the historic Ndebele, King Lobengula period. A midden is an old dump for domestic waste which may consist of animal bone, human excrement, botanical material, mollusc shells, sherds, lithics, and other artefacts and ecofacts associated with past human occupation.

The rescued materials are available for studies to further understand the distribution of the Ndebele Kingdom in and around Bulawayo whilst some of the artefacts are on display at the Bulawayo Museum.

A third exercise will be undertaken as there could certainly be more occupational material culture strewn right across the site.

### ***World's View***

Whilst cutting back some overgrown bush during the ecological survey that was being undertaken at the Worlds View site, Matriona and Luke made an exciting discovery: they had exposed sections of walling a small set of ruins of a hilltop settlement at the base of Mt Nyamatoro. The ruins may well date back to the 15th C and we are eagerly looking forward to them being excavated in 2018 by a heritage and culture specialist.

The Trust is committed to the protection and preservation of these freshly unearthed archaeological heritage ruins and artefacts, and we are very pleased that they will provide an enhanced visitor and educational experience at the two sites.

### **Memorial Bench and plaque in recognition and in celebration of the life of Mr Darrel C.H. Plowes 1925-2016**

The Trust was truly honoured and fortunate to have Mr Darrel Plowes as an active member who was one of the greatest all-round naturalists of Zimbabwe. Following a private family ceremony held in Mutare in late 2017 a memorial bench was donated by Darrel's family and placed in the orchid area at La Rochelle which was a place that had special significance to Darrel, since it was Sir Stephen who inspired Darrel's fondness for orchids, and in turn Darrel has donated the balance of his collection back to La Rochelle. The bench was designed and made by Gary Goss and now visitors can sit and pause and reflect on the beauty of the orchids. The Trust then had a memorial plaque for Darrel, made from black granite, which was placed in the grounds of La Rochelle in 2018.

### **Heritage Education**

The Trust continues to implement its education mandate which is very important to the cultural heritage of Zimbabwe.

#### ***Schools Heritage Education Management Project***

The Trust undertook an innovative, experimental pilot project for school children to "re-discover their living traditions and identify their cultural roots". The project was championed by Mrs Edone Ann Logan Chairperson of the Museum. 132 children and 6 teachers, from a secondary school and 2 primary schools, each of which run a Heritage Club, were involved in the project which was the recipient of an INTO SGP fund for which the Trust was truly appreciative.



#### ***Heritage education: youth linking minds across the continent' Competition***

This educational project was aimed at creating spaces for intercultural learning from various parts of Africa. Students were invited to submit a short, original video clip showing the world their unique heritage by sharing an original experience or activity of their heritage club, which they felt was exciting. The video had to be accompanied by around 250 words explaining the clip. Young people from each of the countries will select a winner from another participating country and the winners will be announced in April 2018.

#### ***Public Talks***

The Museum takes every opportunity to organise speakers to talk about intangible heritage.

This year's speakers included:

- Mr Rob Burrett, BSc and BSc Hons (Archaeology & Geography) and a Master of Science (MSc) in Archaeology and
- Jonathan Zilberg, Ph.D, who was an Associate Research Scholar at the Centre for African Studies at the University of Illinois. His doctorate was entitled Zimbabwean Stone Sculpture: 'The Invention of a Shona Tradition'

#### ***Publications***

The Museum has produced the following heritage booklets:

- Traditional Leadership
- Shona Culture
- 50 Years On
- History of Hon. C.J.Rhode
- History of the National Women's Institute of Zimbabwe and Home Craft Clubs

#### ***COP 23 Climate Change Conference***

The Trust produced a poster entitled "Climate Change: Consequences for the NTZ" for the COP 23 conference held in Bonn (November 2017). Mr Oliver Maurice, INTO Director, kindly displayed the poster on our behalf at the conference on the INTO stand. INTO are working hard to highlight global heritage issues with respect to climate change. The poster can be viewed on our Facebook page and website.



### **Bird Life Survey**

The Bulawayo branch of the Birdlife Zimbabwe visited Mabukuwene in September 2017 and recorded over 29 species during their survey. We are looking forward to their next visit so that they may track and record the bird life in another season.

### **Building and Retaining Relationships**

We continue to enjoy good working relations with many organisations that we have worked with over the years. We also built new relationships with new one's including: The Solon Foundation, Mutare Art Gallery, Organic Africa, The Wildlife Society of Zimbabwe, Museum and Relics Sierra Leone and corporates including Halsted Builders.

### **Social Media**

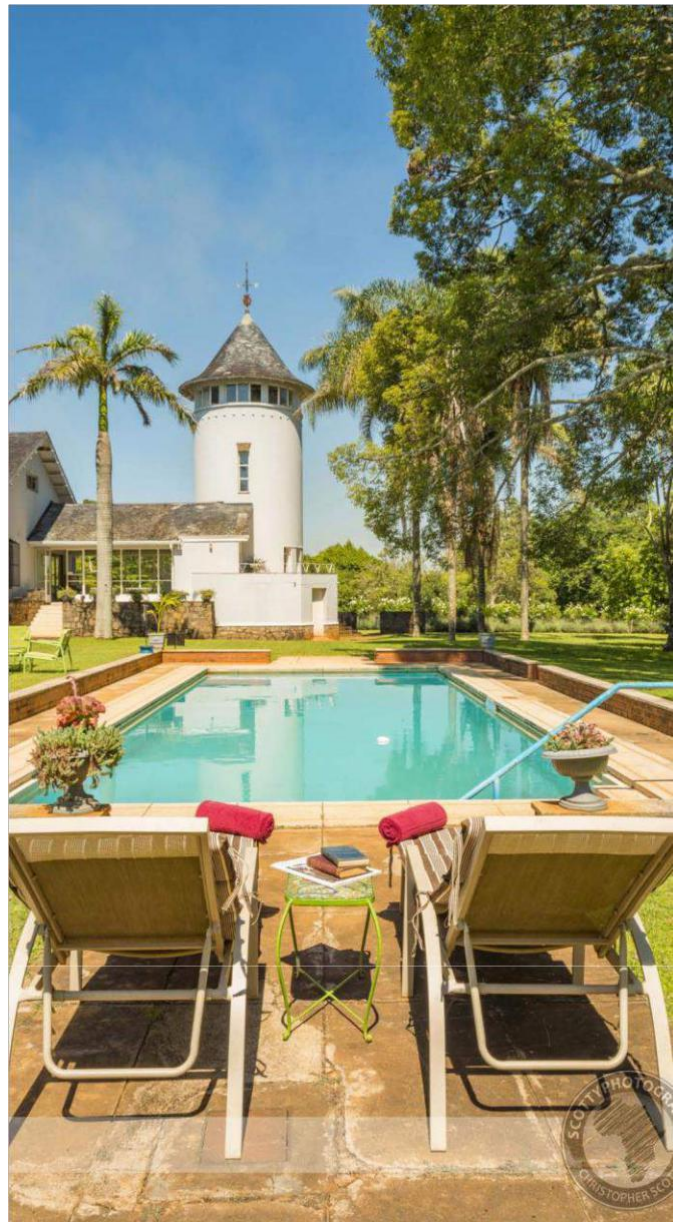
The Trust continues to have an active website see: [www.ntonoz.org](http://www.ntonoz.org) packed with interesting articles and regular posts.

It also has a lively Facebook page: <https://www.facebook.com/pages/National-Trust-of-Zimbabwe/340040082696277?ref=hl>.

### **Marketing**

Marketing activities are important for the Trust in order to build brand awareness, increase visitor numbers and sales, encourage donations, and attract more members.

The Trust published numerous articles in several high-profile publications in Zimbabwe and also in the newsletters of various organisations. Presentations were given to several interest groups including Rotary Harare and the History Society of Zimbabwe. These have been instrumental in lifting the profile of the Trust.



# THE NATIONAL TRUST OF ZIMBABWE FINANCIAL STATEMENTS APRIL 2017 - MARCH 2018

## THE OBJECTS OF THE TRUST

- a) To accept and hold the property in trust for any purposes and to act in any trust for or as trustee of any property devoted to public purposes in accordance with conditions of such trust.
- b) To promote for the benefit of the people of Zimbabwe the permanent preservation and protection of: -
  - i) Lands and buildings of natural, archaeological, historical or aesthetic interest.
  - ii) Natural resources, animal or bird life, trees and flora.
  - iii) Objects or collections of objects of any description having natural archaeological, historical or aesthetic interest including furniture, works of art, stamps and literature.
- c) To provide the public with access to and enjoyment of the lands, buildings, resources, and objects mentioned in (b) above.
- d) To maintain or manage or assist in maintaining or managing the lands and buildings for the purpose of public recreation, entertainment, resort or institution.

## OFFICE BEARERS

President	Mr. D.J. Scott
Vice President	Mrs.S. S. Waterworth
Treasurer	Mr J.G. deB. Hyslop
Secretary	Mr C.D.M. Hyslop
Auditor	Mr. A.P. C.A. (Z) C.A. (S.A.) Joffe
Main Banker	Central Africa Building Society

## REGISTERED PLACE OF BUSINESS

30 Hawkshead Drive  
Borrowdale Harare.



## **REPORT OF THE INDEPENDENT AUDITOR**

### **TO THE MEMBERS OF THE NATIONAL TRUST OF ZIMBABWE**

I have audited the financial statements set out on pages 3 to 7 for the year ended 31 March 2018.

#### **Respective responsibilities of the Trustees and Auditors**

The financial statements are the responsibility of the members of the executive committee. My responsibility is to express an opinion on these financial statements based on my audit.

#### **Scope**

I have conducted my audit in accordance with approved International Standards on Auditing.

Those standards require that I plan and perform the audit to obtain reasonable assurance about whether the financial statements are free of material misstatement. An audit includes:

- examining, on a test basis, evidence supporting the amounts and disclosures in the financial statements
- assessing the accounting principles used and the significant estimates made by the executive committee and
- evaluating the overall financial statement presentation.

In common with other similar Trusts, due to the nature of certain income received, it is not possible to verify that all income has been brought to account, although I have no reason to suppose that there are any omissions.

#### **Audit opinion**

Subject to the foregoing statement, in my opinion, the financial statements in all material respects give a true and fair view of the financial position of the Trust as at 31 March 2018 and of its Income and Expenditure and Statement of Cash Flow for the year then ended, are in conformity with policies suitable for an organisation of this nature and in compliance with the National Trust Act (Chapter 25:12).

Mr. A.P. Joffe C.A.(Z) C.A.(S.A.) 18  
Northampton Crescent. Eastlea  
Harare.

9 August 2018

# THE NATIONAL TRUST OF ZIMBABWE

## BALANCE SHEET

### 31 MARCH 2018

#### ACCUMULATED FUNDS

Balance 31 March 2017	17,765	10,964
Surplus as per the annexed account	4,806	6,801
	22,571	17,765
Capital reserve	279,741	279,741
	302,312	297,506

#### LA ROCHELLE ESTATE FUND

Balance 31 March 2017	(6,825)	(10,384)
Surplus per the annexed account	6,776	3,539
	(49)	(6,825)

#### LA ROCHELLE CENTRE (PRIVATE) LIMITED

BEIT TRUST	3	193,636	197,729
GOVERNMENT OF AUSTRALIA - Direct Aid Programme		6,384	6,384
CURTAIN FOUNDATION		6,655	6,655
TOTAL FUNDS		65,000	65,000
		\$574,138	\$566,449

#### FIXED ASSETS

Donated and leasehold property and capital costs thereon	4	565,625	561,645
Other equipment	5	265	331
		565,890	561,976

#### INVESTMENTS

At valuation	6	510	228
--------------	---	-----	-----

#### CURRENT ASSETS

Cash resources	5,261	2,990
CABS	4,622	2,805
	9,883	5,795

#### CURRENT LIABILITIES

Prepaid subscriptions	1,095	450
R.Burrett - Nyanga book	-	100
T. Meike Trust - Clearing Mabukwene 2017/18	-	1,000
SOLOON Foundation - Schools Video Competition	1,050	-
	2,145	1,550
Net current assets	7,738	4,734
	\$574,138	\$566,449

..... MEMBERS OF THE  
President/Chairman EXECUTIVE COMMITTEE

..... Harare  
9th August 2018

..... Treasurer



# THE NATIONAL TRUST OF ZIMBABWE

## INCOME AND EXPENDITURE ACCOUNT

### YEAR ENDED 31 MARCH 2018

#### INCOME 2018

	Total	Headquarters	La Rochelle	Mabukuwene	Murahwa's Hill	World's View	Rhodes Nyanga
Gate receipts	17,801	-	-	-	-	14,871	2,930
INTO - Crowd Funding 2017	1,000	-	-	-	-	-	1,000
INTO - Bali ICNT 2017	5,695	5,695	-	-	-	-	-
La Rochelle Centre (Private) Limited	22,295	-	22,295	-	-	-	-
Rental of property - Sculptors	600	-	-	-	-	600	-
Subscriptions	2,340	1,725	390	-	-	-	225
Sundry revenue	808	246	-	60	-	314	188
Shop (net)	144	-	-	-	-	-	144
Thomas Meikle Trust	4,000	-	-	4,000	-	-	-
	<u>\$54,683</u>	<u>7,666</u>	<u>22,685</u>	<u>4,060</u>	<u>-</u>	<u>15,785</u>	<u>4,487</u>

#### EXPENDITURE 2018

Administration	3,585	1,067	711	238	-	685	884
Depreciation	66	-	66	-	-	-	-
Environment Survey - World's View	2,308	-	-	-	-	2,308	-
Interest - LARCO (Pvt) Ltd	10,437	-	10,437	-	-	-	-
INTO - Schools Video Competition	1,050	-	-	-	-	-	1,050
INTO - Bali ICNT 2017	5,695	5,695	-	-	-	-	-
Repairs and maintenance	3,628	-	-	-	-	3,141	487
Salaries, wages and expenses	16,332	-	4,485	3,810	-	6,037	2,000
	<u>\$43,101</u>	<u>6,762</u>	<u>15,699</u>	<u>4,048</u>	<u>-</u>	<u>12,171</u>	<u>4,421</u>

#### SURPLUS FOR THE YEAR

	<u>11,582</u>	<u>904</u>	<u>6,986</u>	<u>12</u>	<u>-</u>	<u>3,614</u>	<u>66</u>
--	---------------	------------	--------------	-----------	----------	--------------	-----------

#### Allocated as follows 2018

- Accumulated funds	4,596
- La Rochelle Estate Fund	6,986
	<u>\$11,582</u>

#### INCOME 2017

	Total	Headquarters	La Rochelle	Mabukuwene	Murahwa's Hill	World's View	Rhodes Nyanga
Gate receipts	15,052	-	-	-	-	12,974	2,078
La Rochelle Centre (Private) Limited	21,000	-	21,000	-	-	-	-
Rental of property - Sculptors	600	-	-	-	-	600	-
Subscriptions	2,640	1,890	660	-	-	-	90
Sundry revenue	891	688	-	-	-	-	203
	<u>\$40,441</u>	<u>2,578</u>	<u>21,660</u>	<u>-</u>	<u>-</u>	<u>13,574</u>	<u>2,629</u>

#### EXPENDITURE 2017

Administration	2,325	829	36	-	-	620	840
Depreciation	83	-	-	-	-	83	-
Repairs and maintenance	2,186	-	145	150	-	1,748	143
Salaries, wages and expenses	25,507	-	17,940	-	-	5,617	1,950
	<u>\$30,101</u>	<u>829</u>	<u>18,121</u>	<u>150</u>	<u>-</u>	<u>8,068</u>	<u>2,933</u>

#### SURPLUS/(DEFICIT) FOR THE YEAR

	<u>10,340</u>	<u>1,749</u>	<u>3,539</u>	<u>(150)</u>	<u>-</u>	<u>5,506</u>	<u>(304)</u>
--	---------------	--------------	--------------	--------------	----------	--------------	--------------

