



## COMBINED ANNUAL REPORTS: NUMBER FIVE

April 2018 - March 2019

April 2019 - March 2020



*HERITAGE IS PRECIOUS – TREASURE IT*



#### CONTACT DETAILS:

##### SECRETARIAT

30 Hawkshead Drive  
Borrowdale  
Harare  
Zimbabwe

Email: [ntzimbabwe@gmail.com](mailto:ntzimbabwe@gmail.com)

Website: [www.ntoz.org](http://www.ntoz.org)



[www.facebook.com/pages/National-Trust-of-Zimbabwe](https://www.facebook.com/pages/National-Trust-of-Zimbabwe)

#### REGIONAL COMMITTEES

##### Nyanga

Mrs Edone-Ann Logan  
Mr Guy Cary

##### La Rochelle

Mr Ben Tyser

##### Mutare

Ms Nina Bauer

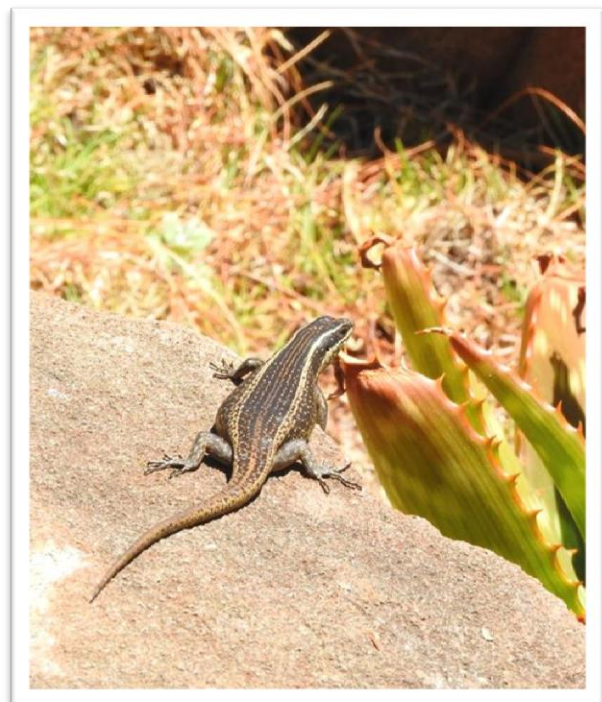
##### Worlds View

Ms Gill Honeyman

## **Contents**

About the National Trust of Zimbabwe .....	6
The NTZ Governing Body .....	6
Overall Aims and Objectives of the Trust.....	6
Office Bearers.....	7
The Structure of the National Trust of Zimbabwe (NTZ) .....	7
Trust Properties .....	8
INTO Membership.....	9
INTO Africa Regional Forum .....	10
NTZ Income .....	10
NTZ Employees .....	10
Services offered by the NTZ sites .....	11
Membership Benefits.....	12
EXECUTIVE CHAIR’S REPORT .....	13
Annual Reports for Each National Trust of Zimbabwe Property .....	17
La Rochelle Estate .....	17
Country House and Spa.....	17
La Rochelle Organics .....	18
Rhodes Nyanga Historical Exhibition Annual Report .....	21
Worlds View Annual Report .....	27
Fort Gomo, Mabukuwene, Murahwa’s Hill and Sebakwe Poort Annual Report .....	29
ACHIEVEMENTS AND OTHER KEY ACTIVITIES .....	30
60th Diamond Anniversary .....	30
INTO Sponsorship and International Conferences .....	30
Funding .....	31
Building and Retaining Relationships with Volunteers .....	32

Trust Family.....	32
Connemara Basin Conservation Project: Ecological and Archaeological Degradation at Worlds View.....	33
Presentation to the 65th Annual General Meeting of the History Society of Zimbabwe .....	34
Marketing and Social Media Platforms .....	35
Articles, Blogs, Book, Newsletters and Publications .....	35
AUDITED FINANCIAL STATEMENT AS AT 31 MARCH 2019 .....	37





### Report Explanation

This report represents a combined Annual Report, Number 5, which covers the following years of reporting:

- April 2018 - March 2019 and
- April 2019 - March 2020

Due to various unforeseen circumstances beyond our immediate control, it is recorded that the NTZ Council was unable to hold the 2019 AGM. However, the audited annual financial statements are included in this report.

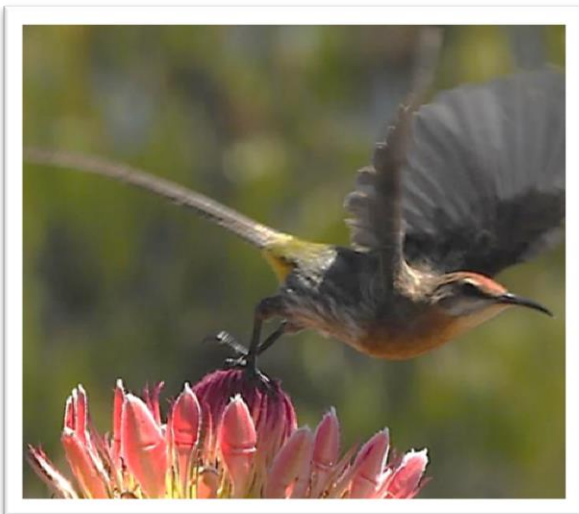
The Council is in touch with all the NTZ members through regular circulars and members are able to contact the Councillors at any time. The 2019 audit gave a clear opinion on those financial statements and the auditor did not note any significant audit or accounting issues. The auditor has agreed to continue in office and will complete the 2019/20 audit in the near future. The audited financial statements will be presented for membership approval at the 2020 AGM and in the April 2020 - March 2021 Annual report.

#### *Post Balance Sheet note:*

The NTZ is currently undertaking an asset verification exercise that will be brought to account in 2020.

### Acknowledgements

We acknowledge, with thanks, Mr Jim Dryburgh, for the delightful photographs of *Proteacea* and sunbirds taken on one of his visits to World's View.





## About the National Trust of Zimbabwe

The National Trust was originally founded in the United Kingdom in 1895 by three Victorian philanthropists - Miss Octavia Hill, Sir Robert Hunter and Canon Hardwicke Rawnsley. Concerned about the impact of uncontrolled development and industrialisation, they set up the National Trust to act as a guardian for the nation in the acquisition and protection of threatened coastline, countryside and buildings. More than a century later the National Trust remains very much alive and a similar sister organization, The NTZ was established in 1960 by the National Trust Act with the same aim of protecting and managing properties for future generations to enjoy.

Some of our properties are held in perpetuity so that their future protection is secure. The others are open to visitors and we are constantly looking at ways in which we can improve our services.

### The NTZ Governing Body

The National Trust act is assigned to the Minister of Environment, Water and Climate Change. It is administered and controlled by a voluntary Council consisting of a President and not less than 10 or more than 20 members of whom not more than 18 are elected at an annual general meeting of members and 3 are appointed by The Ministry.

#### Mission Statement

**'To be the custodians of those properties and sites of cultural heritage and natural beauty which we hold in trust and to maintain and manage them for the benefit and enjoyment of the people of Zimbabwe and our friends now, and as a legacy for future generations'.**

### Overall Aims and Objectives of the Trust

The aims and objectives of the NTZ are as follows:

- (a) to accept and hold property in trust for any public purposes and to act in trust for or as Trustee of any property devoted to public purposes in accordance with the conditions of such trust;
- (b) to promote for the benefit of the people of Zimbabwe the permanent preservation and protection of :
  - i) lands and buildings of national, archaeological, historical or aesthetic interest;
  - natural resources, animal or bird life and trees or flora;

- ii) objects or collections of objects of any description having national, archaeological, historical or aesthetic interest, including furniture, works of art, stamps and literature;
- (c) to provide the public with access to and enjoyment of the lands, buildings, resources and objects mentioned in (b) above;
- (d) to maintain or manage or assist in maintaining or managing lands and buildings for the purpose of public recreation, entertainment, resort or instruction.

### Office Bearers

Executive Chair:	Mr. D. Scott
Vice Chair:	Mrs. S. Waterworth
Treasurer:	Mr J. Hyslop
Secretary:	Mr. C. Hyslop
Executive Council Members:	Mrs. H. Hyslop, Mrs. F. Bache, Mrs L. Goncalves Mrs. C. Peech, Mr. C. Mubaira, Mr. E. Mugamu Mr. M. Murombe, Mrs. G. Honeyman, Mrs. E. Logan Mr. G. Cary
Regional Chairs:	Mrs. G. Honeyman, Worlds View Mrs. E. Logan Rhodes Nyanga Historical Exhibition Mr. G. Cary Rhodes Nyanga Historical Exhibition
Legal Practitioners:	Honey and Blanckenberg, Harare

### The Structure of the National Trust of Zimbabwe (NTZ)

The NTZ operates using a two level structure as follows:

The Executive Council acts as the overall governing body.

Regional Committees at Rhodes Nyanga, Worlds View, Mabukawene and Mutare (La Rochelle, Murahwa's Hill and Fort Gomo) manage their individual portfolio of properties, ie site development and maintenance, membership, merchandise and other sales, marketing, finance, media and so on.

A voluntary Honorary Secretary and Treasurer manage the NTZ's headquarters in Harare.

The accounts of the Trust shall be examined and audited once at least in every calendar year by a person registered as a public auditor in terms of the Public Accountants and Auditor Act [Chapter 27:12], who shall be elected annually at the general meeting.

## Trust Properties

The Trust manages 7 properties in Zimbabwe, across 4 provinces; their location is shown on the Google map followed by a description below:

### Map of our Properties



**Fort Gomo** is a small stone fort located at the top of a hill typical of the many fortifications in the eastern half of Zimbabwe with an attractive area of Miombo woodland and broken granite terrain. There are 360 degree views from the summit;

**La Rochelle** consists of a 108 ha site with a French style tower and manor house, with Welsh slate roof tiles, built by Sir Stephen and Lady Virginia Courtauld in 1951 as a retirement home. A leading Professor of Architecture described it as follows: “La Rochelle is a rare example in Africa of a major early Modern Movement (in architectural terms) private house, and almost unique in Zimbabwe”. Today it is run as a boutique hotel containing historic window panels with over 700 signatures of visitors to the Courtaulds, a large orchid collection in hot houses, arboretum with lovely gardens and, recently, a health spa and an innovative organic herb farm;

**Murahwa’s Hill** is a large granite hill named after a local Headman Madekurahwa under Chief Mutasa who lived at the foot of the hill from around the second half of the 19th



century before relocating further south in the Save Valley. Traditionally it was protected in the past as a place of spirits;

**Rhodes Nyanga Historical Exhibition** known as Rhodes Stables which were built in 1897 for Cecil John Rhodes. It is a museum that houses a display of manuscripts, photographs and other exhibits of interest relating to Manicaland and persons and events connected with its regional history and development;

**Worlds View** which is set high on a hill that affords stunning views of the surrounding landscape. From an altitude of 2000m the escarpment drops 600m to the plain below. There is a Toposcope with numerous plaques of black granite around the perimeter with radiating lines indicating the direction and direct distance to thirty cities, towns and places of interest;

**Mabukuwene** consists of 12 hectares of indigenous trees and plants. It has a view point built upon a rocky outcrop at 1,422 metres above sea level. There are some 80 different species of indigenous trees including some particularly fine specimens of Ficus and Euphorbia with many aloes and other succulents. The property has a long social and historical heritage that extends back from many thousands of years up to the early colonial era;

**Sebakwe Poort (gorge)** is essentially an area of natural and unspoiled woodland comprising a large number of species of indigenous trees, including many fine specimens of Acacia species. The Sebakwe River flows through the property and the poort is an impressive sight that is home to certain birds that makes it an important bird site.



INTERNATIONAL  
NATIONAL TRUSTS  
ORGANISATION

#### INTO Membership

The NTZ is part of the International National Trusts Organisation (INTO) which was founded in 2007. INTO is an international network of National Trusts and similar non-governmental organisations, globally diverse but united by a shared commitment to conserving and sustaining our shared heritage - built and natural, tangible and intangible.

INTO has close links with organizations such as: UNESCO, UNEP, ICOMOS, IUCN and Europa Nostra. Through cooperation, coordination and comradeship between the international community of National Trusts, INTO works to develop and promote best conservation practices, increase the capacity of individual organisations, establish Trusts where they do not presently exist, and advocate in the interests of heritage conservation.

INTO holds a biennial conference hosted by one of its member Trusts for all of its members and interested parties to attend. The NTZ has attended many of the conferences.

INTO are actively involved in various initiatives including conserving and enhancing existing built resources, most notably by the viable re-use of historic and older buildings, greening of existing building stock, and reinvestment in older and historic communities and managing land in a sustainable way.

INTO represents about 55 million individual members and countless millions of visitors to sites and properties across more than 25 countries.

### INTO Africa Regional Forum

In 2015 INTO established the Africa Regional Forum and NTZ is a full time member.

The new INTO Africa group brings together a vibrant network of African Heritage Organisations that will share ideas and resources, develop a continent-wide voice, promote and influence on African cultural heritage matters. The NTZ had the real pleasure of holding the position of Chair of the Africa Forum from its formation and during the period 2015 to 2019.



### NTZ Income

Sources of income for the NTZ include rents, annual subscriptions, donations and bequests, admission charges to properties, hire charges for the use of halls and grounds, and the proceeds of sales of nursery plants and occasionally memorabilia.

### NTZ Employees

During the period April 2018 to March 2020 the NTZ employed the following people at 4 of its properties:

<b>Murahwa's Hill</b>	1 permanent staff member
<b>Rhodes Nyanga Historical Exhibition</b>	1 permanent staff member
<b>Worlds View</b>	3 permanent staff
<b>La Rochelle Estate</b>	
<i>Hotel and Estate Grounds:</i>	11 permanent staff
<i>Organic Farm:</i>	

The thriving La Rochelle Organic Farm continued to expand seasonal employment.

Demonstration Farm	New Jobs	Seasonal Employment	Total
La Rochelle Organics	173	245	418

Farm Workers are in general seasonal in Zimbabwe as all workers have their own land and their own farming activities and therefore take part of the year off to work on their own fields. This is according to the wish of the farm workers.



### Services offered by the NTZ sites

- ✓ Walks in indigenous flora and fauna and formal gardens and arboretums
- ✓ Access to a rare exotic orchid collection
- ✓ Bird watching
- ✓ Viewing rare species of butterflies, beetles, moths and dragonflies
- ✓ Woodland and mountain walks
- ✓ Mountain bike and horse riding trails at La Rochelle
- ✓ Boutique hotel (including self-catering) accommodation at La Rochelle
- ✓ Massage and beauty treatments at the Fantasy Spa at La Rochelle
- ✓ Protea and Wild Flower Conservancy at Worlds View
- ✓ Art gallery at Worlds View
- ✓ Curated permanent exhibitions depicting African culture and early Nyanga settlement, traditional leadership, Cecil Rhodes and Nyanga, tribal Chiefs, the Tangwena People and temporary exhibits
- ✓ Event hosting i.e. small conferences, weddings and company retreats
- ✓ Camping and caravanning



- ✓ Access to research library
- ✓ Viewing historical sites including: ruined stone-walled settlements, Iron Age settlements, livestock enclosures, lowland forts associated with the Shona Dynasties, rock paintings; old village remains, graves and various other stone and brick-built structures

### Membership Benefits

Being a member of the NTZ has benefits both inside the country as well as around the world:

#### Zimbabwe

The Trust has a growing membership. Members enjoy the following benefits:

- Free entrance to NTZ properties in Zimbabwe
- Quarterly E-newsletter
- Discounted tickets for selected productions at Reps Theatres
- Free entry to National Gallery Zimbabwe
- 10% off a Scottyphotography session
- 10% off selected rugs/throws Hayhill Weavers
- 10% off accommodation at La Rochelle Country Hotel
- Reciprocal membership with Bird Life Zimbabwe, Tree Society & History Society

#### United Kingdom

The NTZ has reciprocity with the National Trust of England, Wales and Northern Ireland and the National Trust of Scotland. In terms of arrangements with these Trusts, members are entitled to free admission to all of the many outstanding National Trust properties throughout England, Wales, Northern Ireland and Scotland upon production of a valid National Trust of Zimbabwe membership card. This represents a considerable benefit to members of the Trust who visit the United Kingdom.

#### Worldwide

Through reciprocal arrangements with the National Trusts in Guernsey, Jersey, Barbados, Ireland, Malaysia, Bahamas, Bermuda and New Zealand and with the Australian Council of National Trust's, and the Stichting het Vrienden der Geldersche Kasteelen and Stichting het Geldersch Landscape in the Netherlands, Trust members enjoy free admission to the numerous properties of the National Trusts in those countries.

## EXECUTIVE CHAIR'S REPORT

### Membership

We plan to undertake a campaign to increase NTZ membership (only 119 members at 31 March 2020) through on-going media coverage, regularly posting articles of interest on the NTZ website and Facebook page and improving membership benefits where we can. We need to increase both individual and corporate membership numbers. Corporate members are very important/influential and an area that we have not focused on enough.

### Publicity, Marketing and Social Media

NTZ continues to publish articles for social media publication. Our website and Facebook page are both active. We continue to issue newsletters to members periodically.

### Funding and Business Development

We are re-examining all the business issues facing NTZ. Council will be holding a strategy and business planning meeting to finalise and prioritise the NTZ wish list for April 2020/21 covering projects, programs, activities/events and other requirements. We need to consider all funding opportunities (national and international) available to NTZ. We will re-examine the structure under which NTZ continues to operate, Council operations and members, the increased use of technical expertise, the individual property working committee's targets, with specific responsibilities allocated for Education, Marketing/PR, Environmental, Legal, Finance and Secretarial and any other specific areas identified. We will consider the development of partnerships/relationships with other NGO's (Non-Government Organisations not-for profit entities) and entities with common goals that will result in greater synergies/effectiveness in NTZ's aims and objectives.

Further to our attendance at the Bermuda Conference in 2019 NTZ needs to align its vision, actions and activities with INTO's vision/ethic/theme "Arms Wide Open - Strategies for engaging with diverse communities" (this refers to all stakeholders to whom we relate and provide services to, the communities within which we exist/operate and to formulate membership and community outreach programs generally).

### INTO Africa Group

We continue to be an active member of INTO AG and INTO. Exciting projects and funding opportunities have been highlighted since our attendance at the Nairobi Symposium conference in February 2020 which NTZ will be actively pursuing. We need to start planning the CCNT attendance by NTZ in Belgium 2021 and the funding thereof.

### Mutare

We are looking for NTZ members resident in Mutare as we wish to finalise the formation of another Mutare Committee to look after our sites in that province. However, the illegal resident has once again, taken occupation and the matter is currently being addressed.



### **La Rochelle**

The property continues to operate a boutique hotel of very high standards at La Rochelle. Our tenant continues to look after NTZ's flagship property very well. They are considering investing in more facilities/accommodation at the site, in liaison with ourselves. They were considering environmentally friendly extensions (another wing of hotel rooms) and a bigger conference venue in their long term development plans.

In my last visit and conversation about the expansion of the organic farming operations and training facilities I was very encouraged. They are aggressively expanding the organic farming operations and acreage under crops on leased properties in the area. They were talking to the Forestry Commission about leasing the forest adjoining La Rochelle and to other neighbours about land available to lease. That would give the tenant access to buildings that would be used for organic farming training and accommodation for workers and course attendees.

The "Signature Panels Project" has made considerable progress on the documentation/cataloguing of many hundreds of signatures on the 2 glass panels at La Rochelle.

### **Murahwa's Hill**

Unfortunately, over the last 2-3 years we have had to contend with an illegal resident. With great help from Council Members David Scott, Clare Peech, staff from La Rochelle and George Locke's team in Mutare, the eviction process was recently completed.

We now need to urgently plan the future and to secure and develop this site. We need to allocate responsibility for this project to a new Mutare Committee. We acknowledge the support of the Mutare Museum and the Regional Director of National Museums and Monuments Zimbabwe (NMMZ) in Manicaland, Dr Paul Mupira for our endeavours. An application has been made to have the site declared a "National Heritage Site".

### **Rhodes Nyanga Historical Exhibition**

We continue to display the Jonathan Matimba exhibition. The museum continues to expand its content and activities.

The museum has been managed very positively by that Committee, now under the Chairmanship of Guy Cary after Edone and Aubrey Logan moved into Harare. We wish to sincerely thank the Logans whole heartedly for all their passion, hard work and achievements at RNHE over many years. The renewal and terms of the National Parks Lease are still under discussion.

### World's View

Gill Honeyman's reports on what has been achieved at World's View have given me huge satisfaction on the wonderful progress made by Gill and her team and the overall very satisfactory situation there.

The priority for NTZ now in that area, is to take forward the Connemara Basin Conservation proposal to ensure the whole surrounding area is properly protected into the long term future.

### Sebakwe Poort

We need to discuss plans on how to take this small isolated site forward. We deferred further actions as we were concerned about land acquisition matters in overall terms and right of access in terms of a long term lease. We still need to have a strategy meeting to make decision about the feasibility of developing this site. We are liaising with local residents about the future of this property and the feasibility of environmental education and social visits to the site.

### Fort Gomo

We still need to discuss the options and plans to take this site forward at a brief strategy meeting/discussion. It is a very small site and we need to consider its future carefully.

### Mabukuwene

We have interested and committed people for the formation of a Bulawayo NTZ Committee to drive this site development/management forward and to handle any other NTZ activities that may arise in the future in Matabeleland.

The bush clearing work has been very generously funded by The Thomas Meikle Trust to whom we are most grateful. That clearing work was extensive and is now almost complete. Thank you to Dave Mason for his assistance and to Busani Bafana for his hard work in supervising the team there.

### Education

We have spoken many times about having access to an Educationalist's expertise that is required for future school education programmes and projects. Mr Cary, who has an educational background, has kindly agreed to take up this mantle along with 1 or 2 other NTZ members. They will develop education strategies and plan activities covering environmental/conservation matters and historical heritage/culture programs. This development is very important in terms of the future activities to be undertaken by NTZ in fulfilling its mandate.

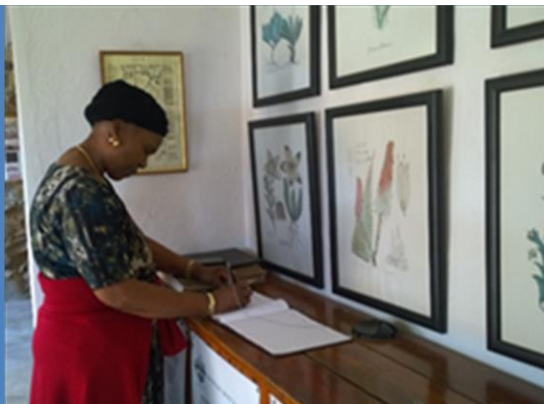
### Heritage Sites and Historical Materials

Plans to take this area of NTZ activities forward stalled as a result of a Council member falling ill and being unavailable for a long time. We will need to reconsider our plan for this project and will convene a strategy meeting/discussion.

We need to help re-establish the national committee structure with NMMCZ/History Society etc, to drive heritage property protection and archival of precious historical documents in various locations nationally. I have had discussions with various interested stakeholders about heritage and historical records requiring archival before they are destroyed. It simply needs organisation/driving from our side to get the interested parties together to plan what is required and how to undertake such a project.

I'd like to personally thank the Council, the Site Committees and their teams for their hard work and commitment to the well-being of NTZ and its responsibilities. Without our voluntary Council and Committee members, we would not have achieved anything! Thank you!

**Mr D.J.Scott, Executive Chair**



*"I just realised that Zimbabwe is such a beautiful country still to be discovered. With this visit*

*I have the best impressions.*

*Thanking the Trust for the zeal to maintain this place for future generations. Keep up the good work".*

The Hon. Oppah Muchingura, Minister of Defence and War Veterans' Affairs Zimbabwe Affairs signing the visitor's book on a recent visit to World's View.

## Annual Reports for Each National Trust of Zimbabwe Property

The Trust manages 7 properties with the help of its Executive Council and Regional Committees all of whom are voluntary workers. Here are the Annual Reports for each of the properties.

### La Rochelle Estate

#### Country House and Spa

The La Rochelle gardens continue to amaze us with their beauty. Here are pictures of the gardens and the rare and wonderful findings we see on a daily basis.



The unique Lady Virginia orchid flowered again in late 2019. The orchid was discovered by Sir Stephen Courtauld on the eastern Java Islands during his travels there sometime before the start of the second world war. There have been no others like it found in the world and so Sir Stephen named the orchid, *Vanda lombakensis* Virginia Courtauld after his wife Virginia. The orchid was taken by Sir Stephen back to England where it was kept in a glass house at Eltham Palace. It flowered once then during the second world war and survived when the glass house that it was in was bombed. A small piece of the plant was recovered and re potted. It was then brought to Zimbabwe when Sir Stephen and Lady Virginia moved to La Rochelle.

This is only the fifth time that it has flowered to our knowledge, the last time being in 2016 and before that in 1973.



“Garden to plate” - we love serving our guests fresh, organic vegetables from our garden.



Our main focus for 2019 was to expand the La Rochelle vegetable garden. We are now able to feed our guests fresh, organic, homegrown goodness and we are thrilled.

Herbal Tea Tastings have become a favourite activity for guests at the hotel where they get to taste fresh, healthy, herbal teas picked straight from the organic farm. We hope to expand this further in 2020.



### **La Rochelle Organics**

It has been a very busy time for La Rochelle Organics and the team continues to work hard to grow organic herbs of export quality. The work continues to grow at a rapid pace in terms of field trials, expanding storage and processing operations, number of people employed, crops planted, hectares under crop and so on. It is amazing what has been achieved.

The total area of crops under production in 2019 at La Rochelle totaled 12.30 ha and consisted of the following varieties:



Crop	<u>La Rochelle Farm</u>
Calendula	3.00ha
Melissa	2.30ha
Peppermint	1.20ha
Spearmint	1.50ha
Stinging Nettle	3.10ha
Forage sorghum - Compost	1.20ha
<b>Total hectares under cropping</b>	<b>12.30ha</b>

Crops grown commercially in 2019 include the following:

#### Stinging nettle organic

Initially it took time to establish and its potential was doubted. However, over time it was realised that it is a hungry feeder with a high irrigation requirement. Consequently both nutrient availability in the soil and water/irrigation methods was improved and it has since started performing very well.

#### Mint organic

This type of mint is the most challenging to grow in this area. It is the most susceptible to disease and plant stress. Growth problems that we have mentioned earlier in this report and are addressing with Melissa are:

- A high Nematode count in year two of growth resulting in root damage.
- A secondary infection of *Fuserium* and *Sclerotinia*.

#### Calendula Organic

Calendula is a good crop for our rotations. However, seed can be a challenge as we collect our own seed, and this reverts back over 2 to 3 seasons. As a result, we continually have to bring in fresh seed for planting. It also has a high labour requirement for harvesting. This next winter we will plant not only to reap petals, but also full flower heads as this is what the market is requiring.

### Spearmint organic and peppermint organic

We have now been inoculating our planting material against *Sclerotinia* and *Fusarium* using *Trichoderma*. We have noticed a major improvement on the disease pressure and tonnage harvested at first cut.

We have also been conducting trials on field mints provided by Martin Bauer. Samples of these have been sent and we understand that they do not fit the specific taste profile required by the customer. We are however keeping these in our parent plant stock if this should change in the future.

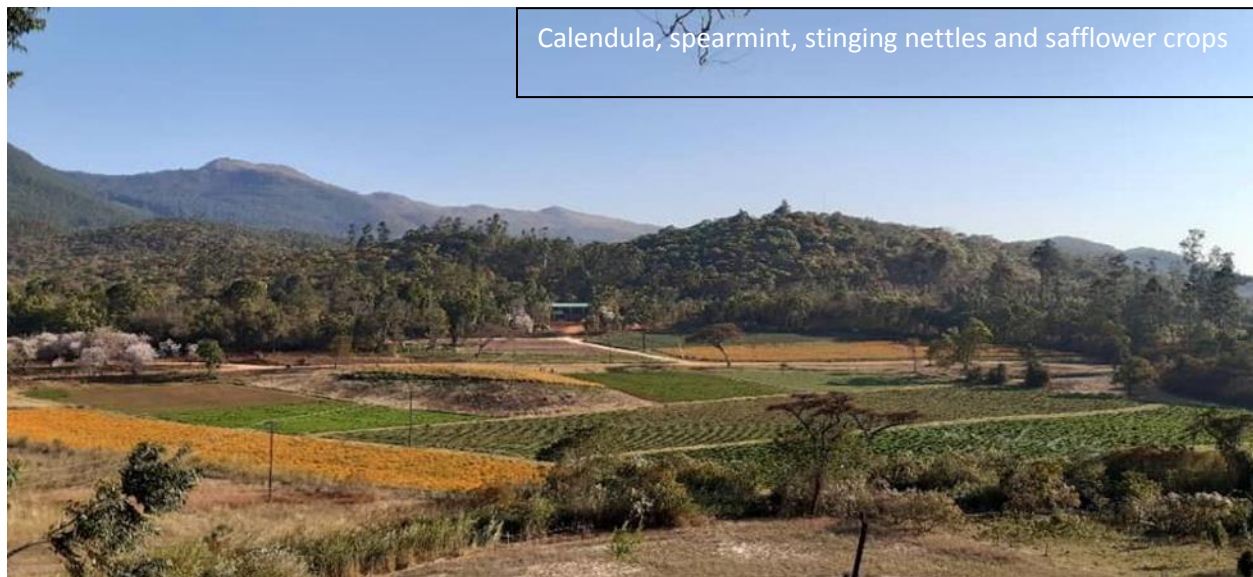
In addition to crop production Organic Africa has established a successful educational programme aimed at small scale farmers. The main subjects of study are ecology, sustainable farming and how to farm organically. The table below lists the training courses that were carried out in 2019.

### Outlook at La Rochelle Organics

For 2020 we are confident to hit production targets.

Trials are still being conducted on new varieties of products as well as organic pest and disease controls. Also biofumigant green crops have been included in the rotations as well as special consideration to biodiversity in the soils and on the farms. Composting operations are planned to increase to 1500 tons this year.

We have started using the new processing machinery and previous contamination and quality problems seem to be resolved. We are also increasing our drying capacity with the increased production expected.



## Rhodes Nyanga Historical Exhibition Annual Report

I wish to extend my appreciation to Mrs Merle Moore (Vice Chairman), Mr Geoff Hawksley (Treasurer), Mr Marshall Nyanhanda (Curator) and all Committee Members - past and present - for efficiently maintaining the smooth running of the museum.

The display depicting the history of the Nyanga Churches and Missions was slowly expanded and improved, with further research undertaken and photographs added.

It is the intention of the Committee to undertake Heritage projects whenever possible. In 2018 we were invited to join with Uganda and Sierra Leone in an INTO cross-border competition which encouraged children to question and do research into customs and traditions. It would be almost impossible to organise a project such as this in the Nyanga area without a 'liaison officer' who is in contact with every school. We are most fortunate to have as an ex-officio member, Mr W Dhlandhlara (SOLON Foundation), who fills this position for us, and enabled us to participate in this project.

Pupils from the Heritage Clubs were encouraged to create a short video depicting their chosen subject, using a cell-phone. Some worked in groups and others individually. The videos were judged initially by a local panel and the best submitted to a panel of school children. The three videos with the most votes were submitted to the INTO group. The best videos were shown at a Prize-Giving Event organised by Mrs Moore and Mr Dhlandhlara. NTZ and SOLON funded the lunches and Mrs Waterworth organised the certificates.



*First prize: St Monica's School with Mr Dhlandhlara, Mrs E.A Logan Chair, Mr D Scott Executive Chair presenting the award*

*Second prize: Nyatate School*



There were monetary prizes which went to the Heritage Clubs. Mrs Waterworth, presented three educational book that were very kindly donated by the Solon Foundation. Our gratitude goes to INTO, the teachers involved, Curator, the judges and committee members and to NTZ Councillors who attended the event.



*Mrs Moore and Mrs Waterworth presenting the books*



Following the lecture and journey of exploration in 2017 to Nyanga North to visit the homes of early Nyanga Sculptors by Dr Jonathan Zilberg, (Associate Research and Scholar for African Studies), the family of the late Jonathan Matimba offered Jonathan's work to RNHE for display. Dr Zilberg and Rob Burrett assisted with the funding of the project and the works of art were transported to the museum in August. This culminated in an Open Day and Exhibition of the works of Jonathan Matimba and local sculptors, who were given the opportunity of displaying their work at the exhibition; some sales were made.

Dr Zilberg spoke to the large gathering of visitors and artists on Nyanga's early sculptors, explaining different styles, materials and techniques. The Committee is now discussing how the widow of Jonathan Matimba can receive some reward for the loan of the works of art. Dr Zilberg presented RNHE with one of the wooden sculptures - The Yawn Dog. A professional video has been compiled by Iain Macdonald as a valuable record of this important event.





Dr Ines Grainger donated the funds for a new sign for the door of the Grainger Room to commemorate the 100th Anniversary of the birth of Don Grainger. A summary of the life of Don Grainger was printed in the John Galt Gazette. This excellent local publication advertises free of charge, monthly news from RNHE and articles of general interest re recent displays, etc.



*Dr Ines Grainger and Head Teacher, Hartley School by the Pre-history display*

The Curator and Student on attachment have updated the inventory documentation and donation records on the computer. They have prepared most books in the Grainger Reading Room for cataloguing; this project needs to be completed and students encouraged to make use of the excellent collection of books for research purposes.

As public interest increases in the museum, so does our opportunity of spreading information and helping to make the world a better place! Mrs Matimba was given a wheel-chair from Rotary, through Council member Clare Peech, as a result of the sculpture exhibition. Dr Ines Grainger donated copies of her Women's Club recipe books to a club organiser in Harare who visited RNHE, for use by her members.

Rob Burrett's historic booklets have become 'best sellers' from the museum shop, with some visitors asking for the latest publication to add to their collection. Rob has also written an excellent booklet for schools on Rock Art, funded by the French Ministry of Foreign Affairs, particularly for the Mukuvisi Woodlands Environmental Project. 400 copies were given for distribution to Nyanga Schools.

As a result of our enquiries and research into the history of the Dutch Settlement, an excellent illustrated document has been written by someone who grew up in that area in the 50s/60s, which can now be used for information on this previously un-documented area and era of Nyanga's history.

Visitors have requested more information on the Natural History of Nyanga, and the Committee is planning a display to depict this.

As a grand finale to our year, we moved, with great difficulty, a Portable Steam Engine donated by Aubrey Logan, from Juliasdale to RNHE, with the assistance of Mr Steve Lapam, Mr Sibanda of National Parks and his tractor driver, the Curator and a number of good, strong men!





### HERITAGE IS PRECIOUS – TREASURE IT



The renovated and painted Engine (exported from UK to SA in 1903 and pulled by oxen to Bindura district in 1904) is happily settled in the Wagon Shed, next to the Ox Wagon.

Good wishes go to Marshall Nyanhanda with his studies by correspondence for a Bachelor of Science Honours degree in Development Studies - under the Faculty of Social Sciences. We have enjoyed the company of our student on attachment Meshullam Mudzedze, and will miss her presence at the museum. She has worked well and matured in confidence over the past ten months, and we wish her well as she continues with her studies in Archaeology, Museum and Heritage Studies.



*Naboth Machopa Vice Chairman, Meshullam Mudzedze and Marshall Nyanhanda Curator*

Our thanks go to Management and Staff of Rhodes Hotel for their support of all our projects and for generously lending their cups, urns and chairs for functions. The Hotel also accommodates the Curator and his family, for which we are most grateful.

To David Scott, Sharon Waterworth and the members of the NTZ Council, our thanks for your continued support and advice. Our thoughts are with Mrs. Helen Hyslop as she struggles with health issues. Helen advised and encouraged us through those first difficult years, and we miss the contact with her.

In stepping down as Chair, my very best wishes for the future go to the new Committee of the RNHE, may you gain as much enjoyment and satisfaction from your museum work as have Aubrey and I have!

*Newly-elected Officers - Guy Cary (Chairman), Merle Moore (Secretary), Josephine Machopa (Treasurer), (Naboth Machopa ( Vice-Chair)*



**Edone A Logan, Chair, April, 2019**

**Footprints:** I am indeed awed by what Edone, first Chairperson of RNHE, and Aubrey Logan and their successive committees and donors have achieved to make such a remarkable historical exhibition. The RNHE is currently the only such NTZ museum in the country: it is our duty to maintain and develop it as a unique showpiece.

**The present path:** Numerous donations have graced our shelves, floors, nooks and crannies over the past year: the Punch Library of Humour from Merle Moore and her late husband Nigel; a 170-year-old executive desk first owned by Sir Benjamin Greenacre, Mayor of Durban, and latterly by his (recently late) great-grandson John, from whose collection of 18 exquisite chess sets a fascinating African one, made of intricately-crafted wire, was chosen for the Museum. The magnificent, wondrously carved ‘Greenacre desk’ now serves proudly as our grand Reception desk.

Much care has been taken into rejuvenating our small entrance garden, litter collection, labels and signs, and the Curator’s unsolicited restoration of wooden railings all add to a positive ambience and attract favourable response.

Hearty tribute is due to our small, determined and enthusiastic committee for their constructive ideas, practical input and generously-given time over this past year. We have been delighted to welcome Nyasha Makanza - Manager of Rhodes Hotel to our ranks.

**Challenges:** The shortages of fuel and rapid decline in value of our local currency over the past year have had a catastrophic impact on our attendance levels, particularly by school parties: schools (and parents) have to budget for ‘outings’ and educational trips well in advance but, by the time they arrive, our very modest entrance fees have become unaffordable for them and we do not have the heart to turn them away.

To be of real use and amongst the greatest of such needs is to be of educational value - to old and young - means more than being merely ‘fascinating’ or cluttered.

In numerical terms the vast majority of our visitors are young people, eager to be captivated and to learn. We must grasp and build on this educational opportunity within this historical exhibition as an adjunct to the international award-winning outreach already achieved, led so commendably by Edone Ann Logan and her assistants.



*Pupils from Hartley Primary School, Chegutu*

**Needs:** A Regional Information Centre: A small 50-seater lecture/video-theatre, of simple construction and comfortably appointed with carpeted steps and a large flat-screen TV for

school children, and public lectures. This is something we believe we now need and it's appropriately educational! Relevant material has already been researched and prepared.

Two other needs are the resurfacing of the Shed's floor, and replacement of outside steps up to the loft.

**Projects:** We are planning a new brochure - one which we hope will 'capture' people irresistibly. With this in mind, we have had a lot of photographs taken professionally both in, and of, the historical exhibition - photographic 'hints' of what is to be found here.

Something we are striving for in RNHE is to achieve a balance in what we display. It is important that we portray significant players and events in our history from Lobengula to Tangwena, from Welensky to Mugabe, from the Mashona rebellion to the liberation struggle - all as part of the boundaries laid down by Rhodes 130 years ago. We have been awakened to this need, surprisingly, by children visiting the historical exhibition who say, "Who were the people ruling this country before Independence in 1980? We want to see them and know about them, too." Boundless scope here for additions to the informative Time Line already set up - and for our video theatre!

The Nyanga region is home to a variety of creative crafts-people: here are to be found wood-carvers, sculptors, weavers, nurserymen and furniture-makers. One of our projects is to give such people the greater exposure they deserve, by holding on-site 'Craft Days' over public holidays when visitors can see them at work (and hopefully buy).

*Middle photograph: Cecilia Korafati and Shillah Chimbandidza of the Nyanga Zuwa Weaving Cooperative carding the wool obtained from a Troutbeck farmer*



*Rose Chandiringa completing a beautiful woolen carpet Joyce Matongo starting to weave a carpet*  
One aspect of Nyanga's history which has been largely overlooked by RNHE is the "Old Dutch Settlement" of Nyanga North, dating from more than a century ago. We mustn't allow this significant part of our local history to slip into oblivion.

Finally, we here in Nyanga live in a paradise of wild flowers. One of our hopes is to celebrate this natural beauty, in RNHE, by displaying copies of Mary Clarke's comprehensive and meticulous paintings of local indigenous flowers - perhaps those relevant to each month.

**Guy Cary, Chair, 2019-2020**



## Worlds View Annual Report



*Cloudburst over the plains below World's View*

We take this opportunity to thank our many visitors, domestic and international, who have given their support and many kind comments on the most recent improvements to our beautiful view site. Without their contributions, received via entrance fees and donations, we would certainly not be able to continue our development and maintenance of this very special and unique place.

The Gallery has had a number of new extensions built over the last four years including two new display rooms and a toilet block to the rear. Our latest addition is the covered veranda which was completed recently.



We formed an association with the National Gallery of Zimbabwe (Mutare branch) last year and have had several successful exhibitions to promote Zimbabwean artists. The NGZ continue to allow us to exhibit their artists' works and as a result, many sales have been achieved on behalf of our young Zimbabwean artists.

*Gill Honeyman, Chair with Elizabeth Muusha Director of NGZ Mutare*

The View has had a number of visits by delegations from various countries which have been hosted by the President's Office, including The Marshall Islands and Equatorial Guinea. It is

gratifying to know that World's View is now on the agenda of our Government to showcase our natural heritage by bringing visiting heads of state to the Eastern Highlands.

Illegal poachers with their hunting dogs are often seen in the area; this picture was taken at the gates of World's View over the Christmas holidays - the man in the foreground is carrying a sack of rock rabbits on his back! The cattle in the background are part of a herd that are left to roam unattended and are forever being chased off the mountain by our caretakers, only for them to appear again a few days later. All the game that used to wander the area has been completely poached out and even now it is rare to see a rabbit in your headlights when travelling the circular drive at night.

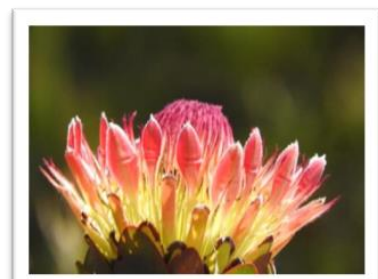


Our third set of new gates has just been installed due to cattle damage, and fence repairs are an ongoing exercise. The fence-line has been extended by 30 m to the south of the View.

Our appeal to Government to have the Connemara Basin put under protective management is almost ready for submission: our grateful thanks to Sharon Waterworth for preparing a brilliant covering document that outlines our aims and brings attention not only the problems of cattle and poaching but also the increasing necessity to preserve our montane grasslands, wetlands and indigenous species of flora and fauna.

We continue to make headway on the eradication of invasive species that have been taking over the area. Our wetlands are being threatened and the whole ecology of the area could be changed forever if steps are not taken to control the growth of pine, wattle and other invaders. To date over 3000 pines have been removed from the escarpment by chainsaw, over 2000 by machete and countless numbers of saplings have been pulled by hand. We would like to thank the board of Little Connemara for contributing towards this exercise and also some of the owners of the properties surrounding the Connemara Lakes for asking their own caretakers to help clear the areas opposite their properties.

The protea cuttings have now matured into strong sturdy plants and the ones grown from the Kirstenbosch seeds have been in flower and cuttings are being taken for propagating for our Plant Sales section.





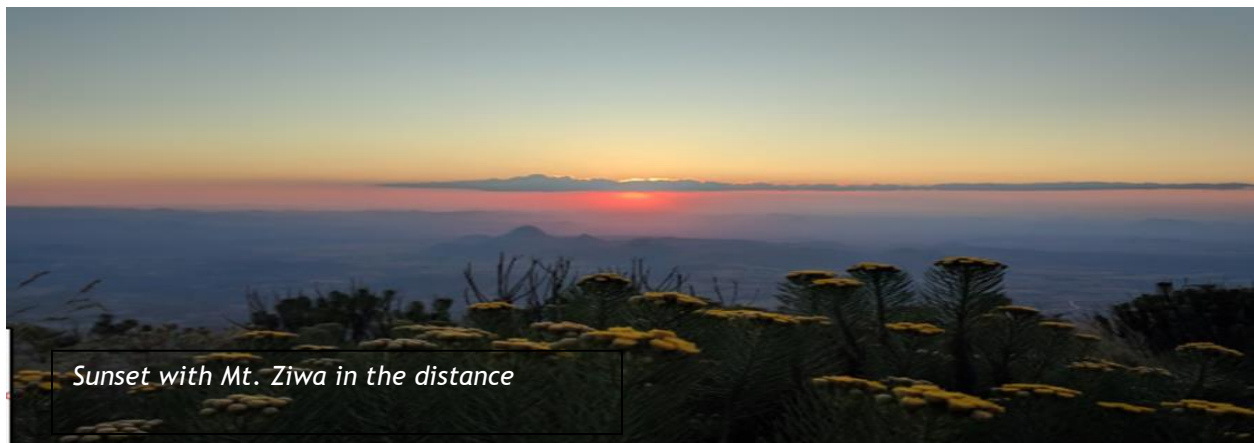
### *HERITAGE IS PRECIOUS – TREASURE IT*

The World's View Sculptors are producing many new pieces for sale in the Sculpture Garden. We are sorry to announce the death of their Chairman, Mr Xaviour Magadu, who has been a great friend and contributor to the site. It is gratifying to know that his work has been sold to a number of international tourists and will grace many a home in far off lands. Our condolences to his family and brother, Panganai, who has taken over the chairmanship of the Sculptors Committee.



*The Gazebo and Sculpture Garden nestled at the foot of Nyamatoro (World's View Mountain)*

The picnic areas are being put to good use and visitors enjoy the magnificent scenery and the gardens that have something of interest growing at all times of year. We look forward to seeing you at Worlds View soon.



**Gill Honeyman, Chair**

### **Fort Gomo, Mabukuwene, Murahwa's Hill and Sebakwe Poort Annual Report**

Annual reports for Fort Gomo, Mabukuwene, Murahwa's Hill and Sebakwe Poort are contained in the Executive Chairs report.

## ACHIEVEMENTS AND OTHER KEY ACTIVITIES

I am delighted to present this report describing the Trust's achievements and other key activities from April 2018 to March 2020.

### 60th Diamond Anniversary

The most exciting news is that the NTZ will be celebrating its Diamond Anniversary in August 2020 - having been 'born' in 1960. This is a significant milestone for the Trust. We are busy planning the celebrations. Details will be posted across our social media platforms.

### INTO Sponsorship and International Conferences

The Trust would like to acknowledge and extend its deep appreciation to the INTO who very kindly provided generous sponsorship that enabled members of the Council to attend 2 significant international conferences in 2019 and 2020.

Bermuda 2019 (see <http://ntoz.org/arms-wide-open-into-bermuda-march-2019/>)

Mr D.J. Scott, Chair, attended the Bermuda conference which revolved around the theme "ARMS WIDE OPEN (Strategies for engaging with diverse communities)" encouraging all trusts to "look outwards" and "think out of the box about communicating with and providing inclusive services to the wider communities within which trusts operate".



This forward thinking concept is of importance to NTZ which seems to be perceived as "a vestige of a colonial past" and NTZ needs to be attracting the support of the wider community at both NTZ Council and Committee and community heritage/cultural activity levels.



### *HERITAGE IS PRECIOUS – TREASURE IT*

NTZ is indeed extremely thankful for the generous financial support by INTO and the Bermuda National Trust, without which, we would not have been able to attend. It was an important opportunity to learn from others, renew prior and make new acquaintances and to promote the NTZ and Zimbabwe.

Nairobi Symposium 2020 (see <http://ntoz.org/culture-grows-between-yesterday-today-and-tomorrow-nairobi-symposium-2020/>)

Thanks to sponsorship from The British Council, Mrs. L. Goncalves, and Mr. W. Dhlandhlara of the Solon Foundation were both pleased to represent the Trust at the Nairobi Symposium held in February 2020.



Mrs Goncalves, Prof. Kilmani Njouga and Mr Dhlandhlara

The event was organised by the British Council and Twaweza Communications in Nairobi, Kenya and held in the stunning grounds of the Botanical Gardens of the National Museum of Nairobi.

The core question leading all the discussions at the British Council part of the Symposium was 'How do youth involvement, contemporary cultural practices and advances in information technology contribute to the overall potential of cultural heritage and how can they lead to cultural heritage interventions becoming more inclusive and engaging with diverse and non-traditional heritage audiences?'

The Trust is now working on implementing the theme of the conference: Culture Grows: Between Yesterday, Today and Tomorrow. In her report back to the Executive Council Mrs Goncalves pointed out that Culture is not static, it is dynamic!

### **Funding**

We deeply thank the following funders who have very generously gifted money and donations of equipment:

Australian Government Direct Aid Programme - Beit Trust - Curtain Foundation - Dr.I. Grainger- Halsteds Hardware - INTO - Solon Foundation - Thomas Meikle Trust

Your engagement is crucial to the future of the NTZ and we thank you for your investment. We are privileged to work with you.

## Building and Retaining Relationships with Volunteers

We work closely with many volunteers and individuals committed to protecting and enhancing NTZ sites. Their practical support and advice is so important to the well-being of the NTZ. Their performance is a wonderful tribute to their loyal dedication. We thank them for everything they achieved over the reporting period.

Birdlife Zimbabwe - Busani Bafuna, Antonia Butcher, Rob Burrett and other residents of Bulawayo- Marilyn Hugill/Dave Mason (The Thomas Meikle Trust) - INTO special thanks are extended to Catherine Leonard, Oliver Maurice and Bill Turner - Mutare Art Gallery - National Gallery of Zimbabwe - National Museums and Monuments of Zimbabwe - National University of Science and Technology - Owners and the Board of Little Connemera - Jakob Raath - Rhodes Hotel - Dr.Zilberg and other stakeholders too many to mention but to whom we are extremely grateful

## Trust Family

Sadly, we marked the passing of 2 of our 'stalwarts' of the NTZ:

Michael John Kimberley: 2 May 1934 - 3 January 2020 (see <http://ntoz.org/tribute-to-mike-kimberley/>)

In 1970 a member of the Executive Committee of the National Trust of Rhodesia, and the Director of the National Archives, visited the Rhodes barn and stable with a view to leasing it from the owners and preserving the historic site and artefacts.

The process was difficult and involved officials in many ministries. The NTZ was determined however, and eventually, with the persistence of Mike Kimberley, in his capacity as a Lawyer, and others a lease was signed with National Parks and permission granted to open the renovated buildings to the public.

The Trust in the meantime had begun to collect articles of historic value, and the National Archives made copies of many historic pictures and documents. This was the birth of the Rhodes Museum, now the RNHE. In Mike's passing we have lost a great character, and highly knowledgeable authority on his passion of indigenous orchids and aloes. Mike was a past Chairman and inspiration to all, and he made a great contribution to the success of the Trust.

The Trust will be honouring Mike's commitment by naming a room after him and erecting a plaque at the Worlds View art gallery.





### HERITAGE IS PRECIOUS – TREASURE IT

Helen de Barsy Hyslop: 18<sup>th</sup> April 1929 - 1<sup>st</sup> June 2019 (see <http://ntoz.org/tribute-to-helen-de-barsy-hyslop/>)



Helen joined the NTZ in 1993 and became a member of the Executive Council in 2003 during which time her contribution was significant and she was instrumental to its success. Helen was dedicated to the Trust and she also chaired the sub-committee for

Heritage Houses which was another of her passions.

Before joining the Trust Helen was Chair of the Rhodesia Association of University Women (1970 -1980) and she was a regular member of International Federation of University Women's Council in Geneva promoting graduate women's and feminist rights over that period.

Helen was an inspirational lady whom will be deeply missed for her professional input and wisdom. Always an active member Helen helped to steer the Executive Council in the right direction. Upon reflection, it was so fitting that on World Heritage Day in 2018 that Helen's enormous input to the Trust was marked. In memory of Helen the Protea garden area at Worlds View was named the "The Helen Hyslop Hill" and a plaque (right) was unveiled during the ceremony. Worlds View is close to where Helen enjoyed many family holidays. The Hill and plaque will be a constant reminder of a very special lady and of her contribution to the Trust.



### Connemara Basin Conservation Project: Ecological and Archaeological Degradation at Worlds View

As a key stakeholder, the Trust is very concerned about the degradation of the environment, the threat to the blue swallow that specifically breeds in the area (declared by Bird Life Zimbabwe as an "Important Bird Area") and the damage to heritage sites that has been occurring on the Nyanga plateau since a large acreage of land was acquired by Government in 2002 and a number of 'plots' allocated to small scale farmers. We are enormously grateful to Mr Rob Burrett a Heritage (Archaeology & History) and Landscape Specialist, BSc (Hons) Geography and Archaeology, MSc Archaeology, who compiled an independent report entitled: "The Protection of World's View, Connemara (Nyanga)" and sent it to the Trust. The report provided key recommendations on the protection of the ecology and archaeological ruins of the area.

In 2018 the NTZ followed Mr Burrett's report up and commissioned two Ecological Studies undertaken by Mr. J. Raath, BSc (Hons) Botany. The purpose of the on-going study is to monitor the changes at the locality over time, be it fire, overgrazing, development, rehabilitation etc. The botanical studies provided valuable baseline scientific data which will





### *HERITAGE IS PRECIOUS – TREASURE IT*

be used as a tool to track the decline or restoration of the locality over time. The survey also highlighted the very fragile, unique and diverse nature of the area and the significant level of endemism present and myriad of ecological niches amongst the broader ecological types.

The environmental and archaeological degradation stems from a change of land title which has led to multiple serious issues including:

- Cattle grazing
- Hunting and poaching
- Invasion by alien species
- Loss of natural springs and wetlands
- Loss of trees
- Land erosion
- Loss of biodiversity
- Uncontrolled fires
- Loss of Corridor for Animals
- Informal settlers and potato farming and
- Loss of carbon sinks

These issues are combining and creating a cascade effect which will rapidly hasten the decline in the overall ecological health of the plateau. Left unchecked this delicate environment could develop hallmarks approaching irreversible ecological damage.

It is very clear that the Nyanga plateau requires protection and management of the highest degree. The NTZ has compiled a comprehensive proposal entitled “Connemara Basin Conservation Project” and we are planning, in collaboration with various parties, to protect this vital part of our natural and cultural heritage. The land would be managed in alignment with the objectives of the Ecotourism project under the National Trust Act, Chapter 25:12, 1960.

Worlds View has become an important part of the visitor experience of Nyanga. This project would leave a legacy behind for other generations to enjoy: the permanent preservation and protection of land, archaeological resources and rare flora and fauna.

### **Presentation to the 65th Annual General Meeting of the History Society of Zimbabwe**

Living cultural heritage is being lost and the world is becoming poorer in culture and wiping away the traces of history and local distinctiveness.

I was privileged to be one of 3 members from the NTZ that attended the “Our Cultural Heritage, the Key to Environmental Sustainability”, the 17th INTO conference held in Bali, Indonesia. The conference brought together 130 delegates from across the world who explored the connection between their cultural traditions and concerns for sustainable development.



## HERITAGE IS

I was then kindly invited by the History Society of Zimbabwe to give a presentation, in the Loyola Hall at St Georges' College, on the conference and the Cultural Heritage Education project that the Trust was honoured to win an international award for. The project was championed by Mrs Edone Ann Logan of the RNHE and 132 children and 6 teachers were involved in the project.




## Marketing and Social Media Platforms

We continue to market the activities of the Trust as an effective way of engaging and building up relationships with our members and people globally, informing people of a new product or service, building and maintaining the Trusts reputation. We work hard to ensure that we have the right content to share and that we remain relevant.

The Trust uses two main communication platforms:

Website see: <https://www.ntoz.org> is packed with interesting articles and regular posts.

Facebook page: <https://www.facebook.com/pages/National-Trust-of-Zimbabwe>

We invite you to visit our page and like us 

## Articles, Blogs, Book, Newsletters and Publications



A fictional book, inspired by the life of Sir Stephen and Lady Virginia Courtauld set at their home at La Rochelle, entitled 'The Dragon Lady' by Louisa Tregor was released in 2019 (see <http://ntoz.org/history-inspired-fiction/>).

The Trust has featured on a wide range of blogs globally.

Please read our quarterly newsletters on the website, they contain a lot of interesting local information <http://ntoz.org/newsletters-and-updates/>

The Trust was successful in publishing numerous articles in various publications in Zimbabwe and the Trust was featured in international newspapers as well.

Footprints	History in Perpetuity :La Rochelle
Footprints	Beauty in the Land of Forgotten Peoples: Worlds View
Out of Africa magazine	An enchanting country house, conference venue and botanical garden
The Daily Telegraph (UK)	An Aristocratic African B&B full of Orchids and Roses
The Times (UK)	The Mystery of the Hidden Art of Zimbabwe

Wakanaka	Refresh your Mind, Body and Soul at La Rochelle Spa
ZimArtist	A Legacy Returned
Zimtrader	Enjoy a Seat with an Amazing View: Worlds View
Zimtrader	Connect with the Present and the Past: Rhodes Museum
Zimtrader	Heritage is Precious: Treasure It
ZiMunda Organics	The Benefits of Organic Farming

In closing, with many areas throughout the world experiencing COVID-19 outbreaks. I find that my final thoughts are with everyone as we enter into a very uncertain future. Please stay healthy, protected and safe.



**Sharon Waterworth, Vice Chair**





*HERITAGE IS PRECIOUS – TREASURE IT*

## REPORT OF THE INDEPENDENT AUDITOR

### OFFICE BEARERS

Executive Chair: Mr D Scott

Vice Chair: Mrs S Waterworth

Treasurer: Mr J Hyslop

Secretary: Mr C Hyslop

Auditor: Mr. A.P. Joffe C.A. (Z) C.A. (S.A.)

Main Banker: Central African Building Society

### REGISTERED PLACE OF BUSINESS

30 Hawkshead Drive

Borrowdale

Harare

## AUDITED FINANCIAL STATEMENT AS AT 31 MARCH 2019



## REPORT OF THE INDEPENDENT AUDITOR

I have audited the financial statements set out on pages 3 to 7 for the year ended 31 March 2019.

### Respective responsibilities of the Trustees and Auditors

The financial statements are the responsibility of the members of the executive committee.

My responsibility is to express an opinion on these financial statements based on my audit.

### Audit Scope

I have conducted my audit in accordance with approved International Standards on Auditing. Those standards require that I plan and perform the audit to obtain reasonable assurance about whether the financial statements are free of material misstatement. An audit includes:

- examining, on a test basis, evidence supporting the amounts and disclosures in the financial statements
- assessing the accounting principles used and the significant estimates made by the executive committee and
- evaluating the overall financial statement presentation.

In common with other similar Trusts, due to the nature of certain income received, it is not Possible to verify that all income has been brought to account, although I have no reason to suppose that there are any omissions

### Audit opinion

Subject to the foregoing statement, in my opinion, the financial statements in all material respects give a true and fair view of the financial position of the Trust as at 31 March 2019 and of its Income and Expenditure and Statement of Cash Flow for the year then ended, are in conformity with policies suitable for an organisation of this nature and is in compliance with the National Trust Act (Chapter 25:12).

Mr. A.P. Joffe C.A.(Z) C.A.(S.A.)

18 Northampton Crescent

Eastlea, Harare

9 August 2019

**BALANCE SHEET**  
**31 MARCH 2019**

	<u>Notes</u>	<u>2019</u>	<u>2018</u>
<b>ACCUMULATED FUNDS</b>			
Balance 31 March 2018		22,522	10,940
Surplus as per the annexed account		18,811	11,582
		<u>41,333</u>	<u>22,522</u>
Capital reserve		1,383,329	279,741
		<u>1,424,662</u>	<u>302,263</u>
 <b>LA ROCHELLE CENTRE (PRIVATE) LIMITED</b>			
BEIT TRUST	3	179,496	193,836
GOVERNMENT OF AUSTRALIA - Direct Aid Programme		6,384	6,384
CURTAIN FOUNDATION		6,655	6,655
		<u>65,000</u>	<u>65,000</u>
<b>TOTAL FUNDS</b>		<u><u>\$1,682,197</u></u>	<u><u>\$574,138</u></u>
 <b>FIXED ASSETS</b>			
Donated and leasehold property and capital costs thereon	4	1,669,213	565,625
Other equipment	5	212	265
		<u>1,669,425</u>	<u>565,890</u>
 <b>INVESTMENTS</b>			
At valuation	6	<u>826</u>	<u>510</u>
 <b>CURRENT ASSETS</b>			
Cash resources		9,682	5,261
CABS		2,677	4,622
		<u>12,359</u>	<u>9,883</u>
 <b>CURRENT LIABILITIES</b>			
Prepaid subscriptions		413	1,095
OLON Foundation - Schools Video Competition		-	1,050
		<u>413</u>	<u>2,145</u>
Net current assets		11,946	7,738
		<u><u>1,682,197</u></u>	<u><u>\$ 574,138</u></u>

.....  
MEMBERS OF THE EXECUTIVE COMMITTEE

Chair

Harare

9 August 2019

**INCOME AND EXPENDITURE  
ACCOUNT  
YEAR ENDED 31  
MARCH 2019**

<u>INCOME 2019</u>	<u>Total</u>	<u>Head quarter s</u>	<u>La Rochell e</u>	<u>Mabu ku wene</u>	<u>Murah wa's Hill</u>	<u>World's View</u>	<u>Rhodes Nyanga</u>
Gate receipts	20,218	-	-	-	-	16,997	3,221
INTO - Bermuda ICNT 2019	3,850	3,850	-	-	-	-	-
La Rochelle Centre (Private) Limited	28,272	-	28,272	-	-	-	-
Rental of property - Sculptors	600	-	-	-	-	600	-
Subscriptions	2,495	2,375	-	-	-	-	120
Sundry revenue	2,026	1,581	-	-	-	-	445
Shop (net)	237	-	-	-	-	-	237
Thomas Meikle Trust	4,200	-	-	4,200	-	-	-
	\$						
	61,898	7,806	28,272	4,200	-	17,597	4,023
<u>EXPENDITURE 2019</u>							
Administration	4,077	1,046	180	-	-	1,273	1,578
Depreciation	53	-	-	-	-	53	-
Environment Survey - World's View	1,430	-	-	-	-	1,430	-
Interest - LARCO (Pvt) Ltd	13,932	-	13,932	-	-	-	-
INTO - Bermuda ICNT 2019	5,050	5,050	-	-	-	-	-
Repairs and maintenance	9,453	-	98	4,550	-	4,553	252
Salaries, wages and expenses	9,092	-	-	-	-	6,621	2,471
	43,087	6,096	14,210	4,550	-	13,930	4,301
<u>SURPLUS FOR THE YEAR</u>	18,811	1,710	14,062	(350)	-	3,667	(278)

INCOME 2018

	<u>Total</u>	<u>Head quarter s</u>	<u>La Rochell e</u>	<u>Mabuku wene</u>	<u>Murahwa's Hill</u>	<u>World's View</u>	<u>Rhodes Nyanga</u>
Gate receipts	17,801	-	-	-	-	14,871	2,930
INTO - Crowd Funding 2017	1,000	-	-	-	-	-	1,000
INTO - Bali ICNT 2017	5,695	5,695	-	-	-	-	-
La Rochelle Centre (Private) Limited	22,295	-	22,295	-	-	-	-
Rental of property - Sculptors	600	-	-	-	-	600	-
Subscriptions	2,340	1,725	390	-	-	-	225
Sundry revenue	808	246	-	60	-	314	188
Shop (net)	144	-	-	-	-	-	144
Thomas Meikle Trust	4,000	-	-	4,000	-	-	-
	\$						
	54,683	7,666	22,685	4,060	-	15,785	4,487

EXPENDITURE 2018

Administration	3,585	1,067	711	238	-	685	884
Depreciation	66	-	66	-	-	-	-
Environment Survey - World's View	2,308	-	-	-	-	2,308	-
Interest - LARCO (Pvt) Ltd	10,437	-	10,437	-	-	-	-
INTO - Schools Video Competition	1,050	-	-	-	-	-	1,050
INTO - Bali ICNT 2017	5,695	5,695	-	-	-	-	-
Repairs and maintenance	3,628	-	-	-	-	3,141	487
Salaries, wages and expenses	16,332	-	4,485	3,810	-	6,037	2,000
	\$						
	43,101	6,762	15,699	4,048	-	12,171	4,421
 SURPLUS FOR THE YEAR	 11,582	 904	 6,986	 12	 -	 3,614	 66





**CASH FLOW STATEMENT**  
**31 MARCH 2019**

	<u>2019</u>	<u>2018</u>
<b>SOURCES OF CASH</b>		
<u>Surpluses:</u>		
Head Quarters	1,710	904
La Rochelle	14,062	6,986
Mabukuwene	-	12
Worlds View	3,667	3,614
Rhodes Nyanga Historic Exhibition	-	66
	<u>19,439</u>	<u>11,582</u>
Deficit:Mabukuwene	(350)	-
Rhodes Nyanga Historic Exhibition	(278)	-
<b>NET TOTAL SURPLUS</b>	<u>18,811</u>	<u>11,582</u>
Add: Non cash item Depreciation	53	66
<b>TOTAL OPERATING SURPLUS</b>	<u>18,864</u>	<u>11,648</u>
<u>Reduction in bank balance from previous year</u>	-	-
<b>CABS</b>	<u>1,945</u>	<u>-</u>
	<u>20,809</u>	<u>11,648</u>
Prepaid subs	-	645
SOLON Trust - Schools Video Competition	-	1,050
<b>TOTAL SOURCES OF CASH</b>	<u>\$ 20,809</u>	<u>\$ 13,343</u>
 Applied as follows:		
Improvements to La Rochelle	-	3,480
Improvements - World's View	-	500
CABS	-	1,817
Cash	4,421	2,271
La Rochelle Centre (Private) Limited	14,340	3,893
T. Meikle Trust - Donation clearing Mabukuwene 2017/18	-	1,000
Reduction in pre-paidsubscriptions	682	-
SOLON Trust - Schools Video Competition	1,050	100
Increase in value of investment	316	282
	<u>20,809</u>	<u>9,363</u>
 <b>TOTAL CASH APPLIED</b>	<u>\$ 20,809</u>	<u>\$ 13,343</u>



**NOTES TO THE FINANCIAL STATEMENTS**  
**31 MARCH 2019**

**FUNCTIONAL CURRENCY**

The financial statements are expressed in Zimbabwe (ZWL) dollars in terms of Statutory Instrument 33 of 2019.

The rate of exchange throughout the year was 1:1 to the US\$. Revaluation of fixed assets was at 3:1 to the US\$ at the year end.

**ACCOUNTING POLICIES**

**Accounting convention**

The financial statements are prepared under the historic cost convention, with the exception that all fixed

assets acquired prior to March 2019 have been revalued to reflect their estimated value in Zimbabwe (ZWL) dollars.

Improvements at La Rochelle and Rhodes Nyanga Historic Exhibition have been stated at cost.

No other procedures have been adopted to reflect the impact on the financial statements of specific price

changes or changes in the general level of prices.

**Taxation.**

The Commissioner of Taxes in a letter dated 16 April 1993(Ref:Com1051/F.86) exempted the Trust from income tax and withholding tax. This exemption has been revalidated in terms of ZIMRA authority of 23 July 2013.

**Depreciation of fixed assets.**

No depreciation is provided on capital costs incurred on donated and leasehold property. Insofar as this relates to buildings this is not in accordance with International

Reporting Standards. The amounts at which the Fixed Assets are stated are equal to their fair values.

Depreciation is provided on other fixed assets on the reducing balance basis at an annual rate of 20%

estimated to write off their cost over their expected useful lives.

**Revaluation.**

Fixed assets were revalued by the Committee at 31 March 2019 and the surplus arising therefrom was reflected as a capital reserve. Conversely where assets are obsolete they have been written off.

**LA ROCHELLE CENTRE (PRIVATE) LIMITED**

La Rochelle Centre (Private) Limited is a Company incorporated in Zimbabwe. A new fifty year lease on the property La Rochelle

entered into with effect from 1 July 2017. The rental net of interest is to be credited to the loan account.

Improvements to the property will be on the BOOT principle over the period of the lease.

**DONATED AND LEASEHOLD PROPERTY AND CAPITAL COSTS THEREON**

<b>Donated property</b>	<b><u>2019</u></b>	<b><u>2018</u></b>
Stand 2508 Mutare Township (Murahwa's Hill) donated by the Municipality of Mutare	157,500	52,500
Lot 4 of Banks, Mutare District donated by Mr J.P.Valentine	5,250	1,750
World's View, Stand 17 Little Connemara Township, Nyanga donated by Governement; Lots 2,7,8 of Little Connemara, Nyanga donated by Little Connemara (Private) Limited	5,250	1,750
Improvements	54,825	18,275
La Rochelle Estate in District of Mutare donated by Lady Virginia Courtauld	525,000	175,000
Improvements - La Rochelle Centre (Private) Limited	607,557	202,519
Improvements - Curtain Foundation	195,000	65,000
Mabukuwene in the District of Bulawayo donated by the Thomas Meikles Trust and Investment Company (Private) Limited	105,000	35,000
<b>Leasehold property</b>		
Rhodes Nyanga Barn	2	2
Improvements to date	13,799	13,799
Sebakwe Poort Park	30	30
	<u>\$1,669,213</u>	<u>\$ 565,625</u>



## HERITAGE IS PRECIOUS – TREASURE IT

### OTHER EQUIPMENT

	Cost	Aggregate depreciation	Book Value	2018
Lawnmower - World's View	414	202	212	265
	<u>414</u>	<u>202</u>	<u>212</u>	<u>265</u>

	<u>No.of</u>		<u>Market</u>	
<b>INVESTMENTS</b>	<u>shares</u>		<u>Value</u>	2018
Meikles Limited	1,767	revalued	826	510
Halogen Limited(delisted ex ZSE)	466	revalued	nil	Nil
			<u>\$826</u>	<u>\$510</u>